

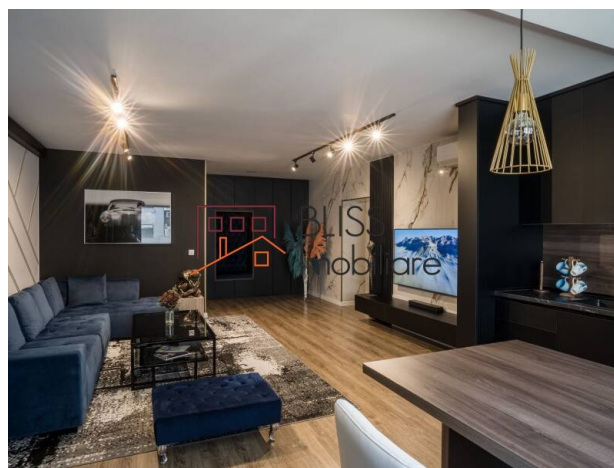
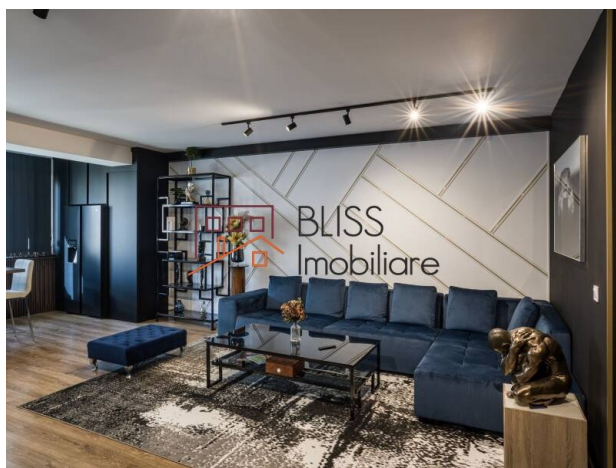
**Violetta Tudorache**

☎ +40 729 005 624

✉ contact@blissimobiliare.ro
(mailto:contact@blissimobiliare.ro)

Updated on 2 May 2024

1-bedroom premium apartment with parking space and storage space

180,000 EURWeb Reference
#119460📍 Ivory Residence Pipera, Pipera OMV Rond,
Bucharest / Ilfov

<https://blissimobiliare.ro/en/apartment-1-bedroom-for-sale-iancu-nicolae-pipera-bucharest-ilfov-119460>
(<https://blissimobiliare.ro/en/apartment-1-bedroom-for-sale-iancu-nicolae-pipera-bucharest-ilfov-119460>)

Description

BLISS Imobiliare presents a 1-bedroom apartment, furnished and equipped deluxe, located in the Ivory Residence residential complex, Pipera OMV Rond area.

The property includes a parking space (multi-level parking) and an underground storage space.

The total area is 72 square meters and can be divided into: a spacious living room with an open kitchen, a comfortable bedroom, an elegant bathroom, a balcony and a welcoming hall. This apartment offers comfort and elegance, perfect for enjoying a refined lifestyle. It is fully furnished and equipped with all the necessary modern appliances, and the elegant furniture beautifully dresses the apartment.

In terms of thermal comfort, the property has its own central heating and air conditioning units.

From Ivory Residence you have access to all areas of interest for the whole family, from public transport, infrastructure, shopping and relaxation spaces or educational institutions and business centers.

Near the complex you can find three bus stops (135, R449, R450), two metro stations - Aurel Vlaicu (11 min.) and Pipera (7 min.), and for your trips outside the city, you have quick access to the ring road and the A3 highway (5 min.) and to Băneasa International Airport (Aurel Vlaicu).

You gain valuable time when the children's school and kindergarten are close to home, and your office is also a few minutes away - Pipera Plaza, Cubic Center, Global Plaza, Swan Office Park - all within 3 minutes away.





Relaxation and shopping in the most modern shopping centers, Promenada mall and Băneasa Shopping City, and you can do the necessary hours of exercise in Word Class or with a visit with the little ones to the Zoo.

The complex benefits from connections to all public utilities, generous green spaces around the blocks, multi-storey parking, basement reserved for speakers, but also a parking area intended exclusively for visitors.

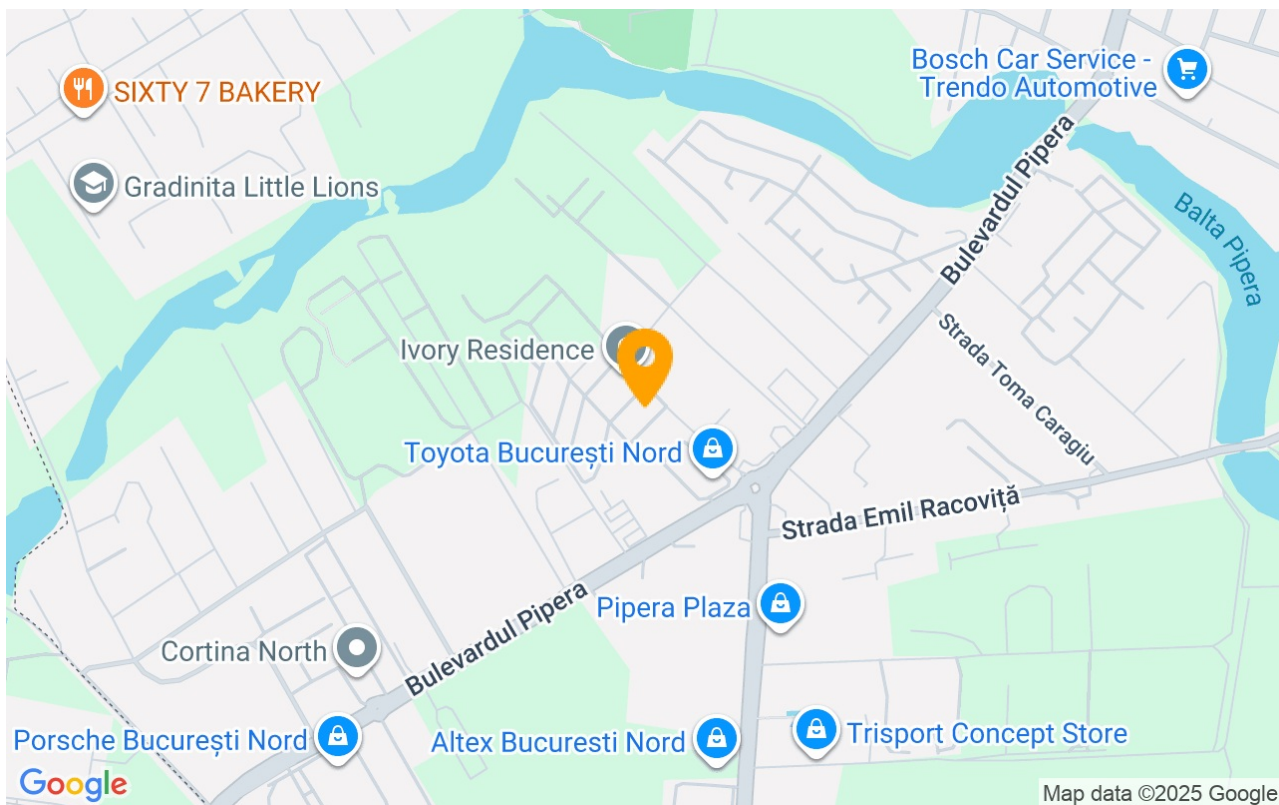
Property details

Rooms no.	2
Useable surface	68m²
Constructed surface	72m²
Apartment type	Apartment
Type of rooms	Independent
Type of comfort	Deluxe
Bedrooms no.	1
Kitchens no.	1
Bathrooms no.	1
Building type	Block
Year built	2022
Config	1S+P+7
Floor	1
Balconies no.	1
State	Finished
Elevator	Yes
Parking inside	1
Storage no.	1

Amenities

-  Equipped kitchen
-  Furnished
-  Private heating
-  Air conditioning

Location



Photos

