

**Violetta Tudorache**

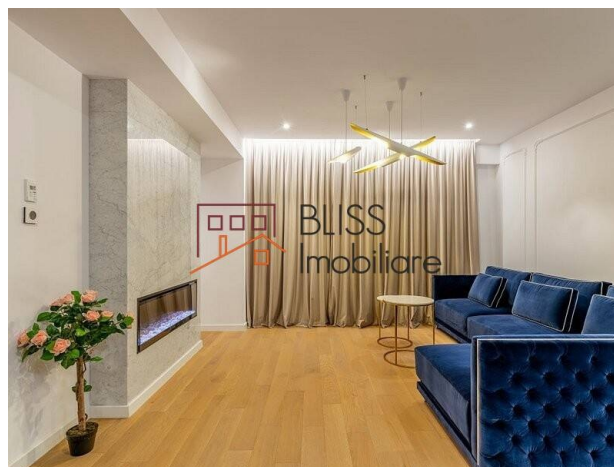
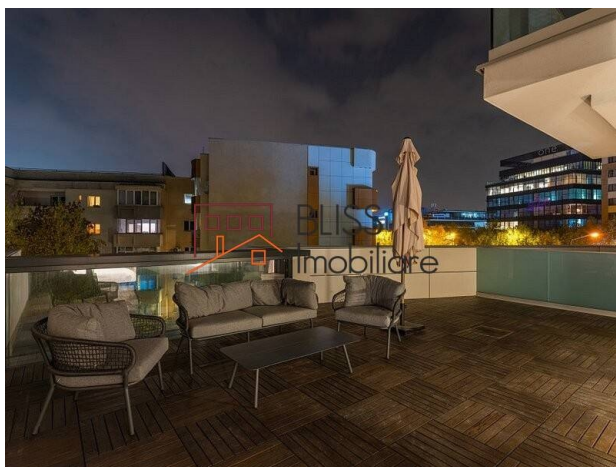
☎ +40 729 005 624

✉ [contact@blissimobiliare.ro](mailto:contact@blissimobiliare.ro)  
(mailto:contact@blissimobiliare.ro)

Updated on 19 December 2024

**1 bedroom apartment**📍 One Herastrau Towers, Aviatiei Nord,  
Bucharest**1,500 EUR +VAT / month**

Web Reference

**#119917**

<https://blissimobiliare.ro/en/apartment-1-bedroom-for-rent-aviatiei-promenada-mall-metro-pipera-bucharest-119917> (<https://blissimobiliare.ro/en/apartment-1-bedroom-for-rent-aviatiei-promenada-mall-metro-pipera-bucharest-119917>)

**Description**

BLISS Imobiliare presents a 1-bedroom apartment, located on the 2nd floor of the newest and exclusive residential complex, ONE Herastrau Towers, in the north of the capital, Herastrau Aviatiei area.

The interior finishes and furniture meet the highest quality standards, and the combination of colors and textures offers comfort and privacy.

The spacious apartment has an area of 55 square meters, and is divided into a spacious living room with dining area and open space kitchen, 1 bedroom, a bathroom and a spacious terrace of 45 square meters.

The complex where the apartment is located, One Herastrau Towers, offers a panoramic view of Lake Herastrau and the northern area of Bucharest. It is a mixed complex that includes both residential and office spaces, as well as commercial spaces that serve both residents and those who carry out their activities in the area or are simply passing through. The complex received the "Green Homes Certification", which marks superior standards of performance and sustainability.

Other benefits of the complex are the 2 underground parking levels, 24/7 permanent security, integrated video surveillance system, etc.

The area where the apartment is located is one of the most exclusive and coveted in Bucharest, being surrounded by the neighborhoods of Floreasca, Herastrau and Baneasa, being not only a perfect place for your home, but also for an ideal lifestyle.

Herastrau Park, the largest park in the capital, which is a few minutes away, is famous for its restaurants, clubs and cafes. It facilitates and encourages outdoor sports and relaxation activities, being a safe and wonderful environment for families with children.

Also, in the immediate vicinity of the complex there are top restaurants and cafes from the northern area, as well as shops, gyms, kindergartens, bank branches, etc., everything you need for a modern and comfortable lifestyle.

For a greater variety of shops, restaurants and recreational activities, we have Promenada Mall, which is 6 minutes away by car, and Baneasa Shopping City, which is approximately 10 minutes away by car.

The Aurel Vlaicu metro station is a 17-minute walk away, which is a great advantage and facilitates transport to the areas of interest in Bucharest.



Property details


Rooms no.	2
Useable surface	55m²
Constructed surface	100m²
Apartment type	Apartment
Type of rooms	Independent
Type of comfort	Comfort 1
Bedrooms no.	1
Kitchens no.	1
Bathrooms no.	1
Building type	Block
Year built	2021
Config	2S+P+12
Floor	2
Balconies no.	1
State	Finished
Elevator	Yes
Parking inside	1

Amenities

 Equipped kitchen

 Dishwasher

 Furnished

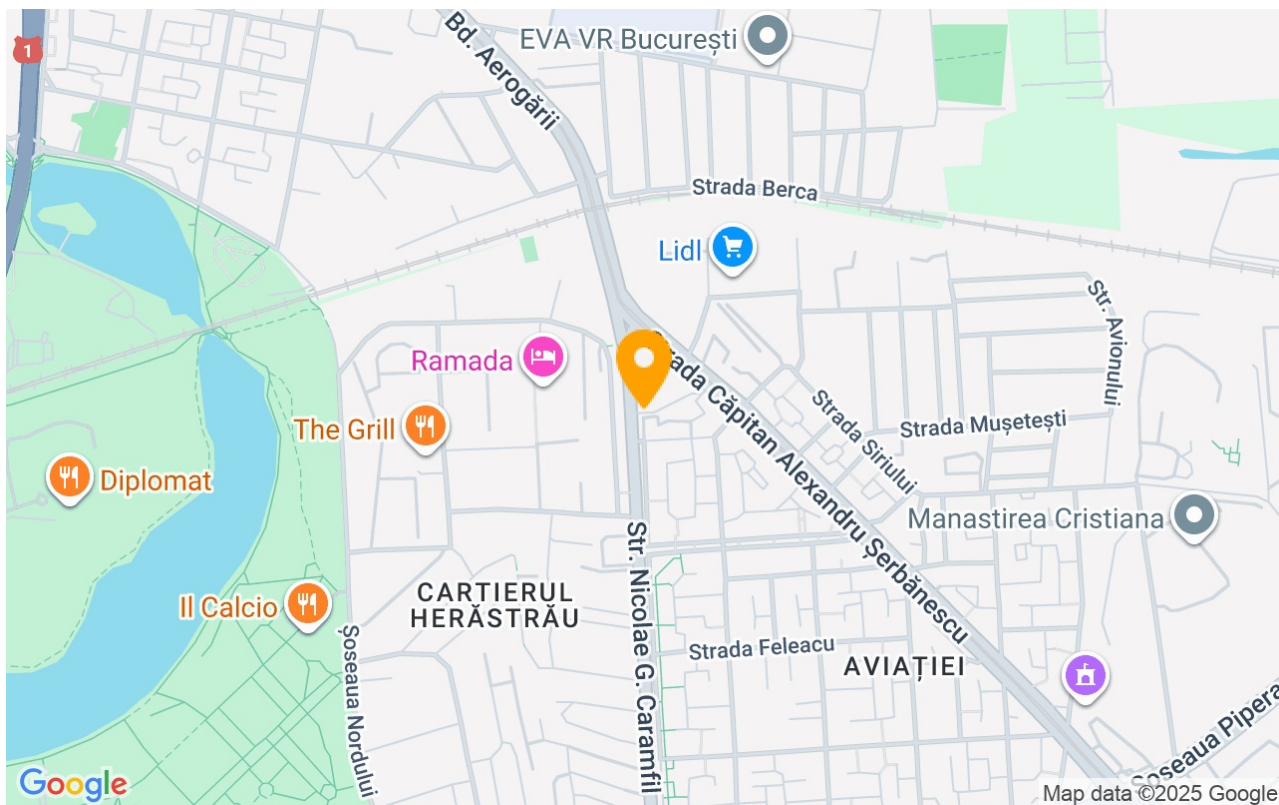
 Building heating

 Air conditioning

 Fireplace



## Location



## Photos

