



**Violetta Tudorache**

+40 729 005 624

[contact@blissimobiliare.ro](mailto:contact@blissimobiliare.ro)  
(<mailto:contact@blissimobiliare.ro>)

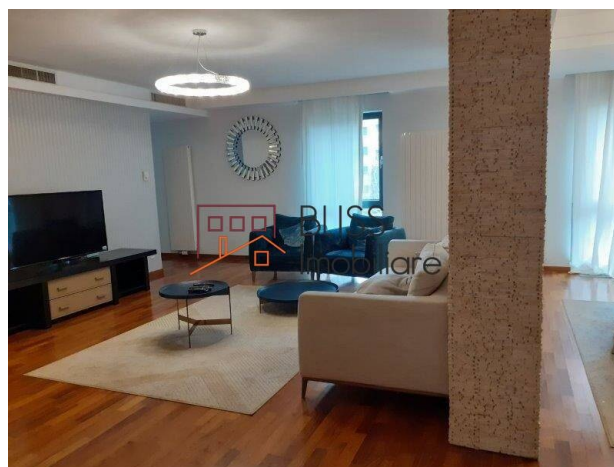
Updated on 20 November 2025

## Apartment with 3 bedrooms

📍 Baneasa Rezidential, Iancu Nicolae, Bucharest

Web Reference

**#121835**



<https://blissimobiliare.ro/en/apartment-3-bedrooms-for-rent-iancu-nicolae-pipera-bucharest-121835>  
(<https://blissimobiliare.ro/en/apartment-3-bedrooms-for-rent-iancu-nicolae-pipera-bucharest-121835>)

### Description

Discover this furnished 4-room apartment in the Baneasa Residential Complex, including underground parking and a storage unit. With a built area of 195 sqm, this apartment offers 4 rooms and three bathrooms, a closed kitchen, and 2 balconies.

## Total Area of 195 sqm, Quality Finishes, Perfect for Families

The living room extends into a dining area with balcony access, while the kitchen is fully equipped with furniture and appliances, including central heating. The master bedroom has a bathroom with a bathtub and balcony access, while the other two bedrooms each have their own bathroom, one with a bathtub and the other with a shower, finished with natural stone.

Quality finishes include hardwood/natural stone floors, bathrooms with natural stone flooring and cladding, washable wallpaper, metal doors, thermal-insulated windows with screens/electric blinds, video intercom, TV/internet network, etc. Utilities are separately metered for gas, water, and electricity.

With one of the largest shopping centers in Bucharest nearby, enjoy quick access to a variety of shops, restaurants, cinemas, and recreational spaces. It's the ideal place for shopping, entertainment, and meeting friends.

The proximity to Baneasa Park offers a green oasis for relaxation, suitable for outdoor walks, jogging, picnics, or simply enjoying nature amidst the city's hustle and bustle.

With Henri Coanda International Airport (Otopeni) just a short distance away, residents in the area benefit from quick and convenient access to domestic and international flights.





The presence of schools, kindergartens, and educational institutions nearby makes the area attractive for families with children, offering quality educational facilities.



Property details

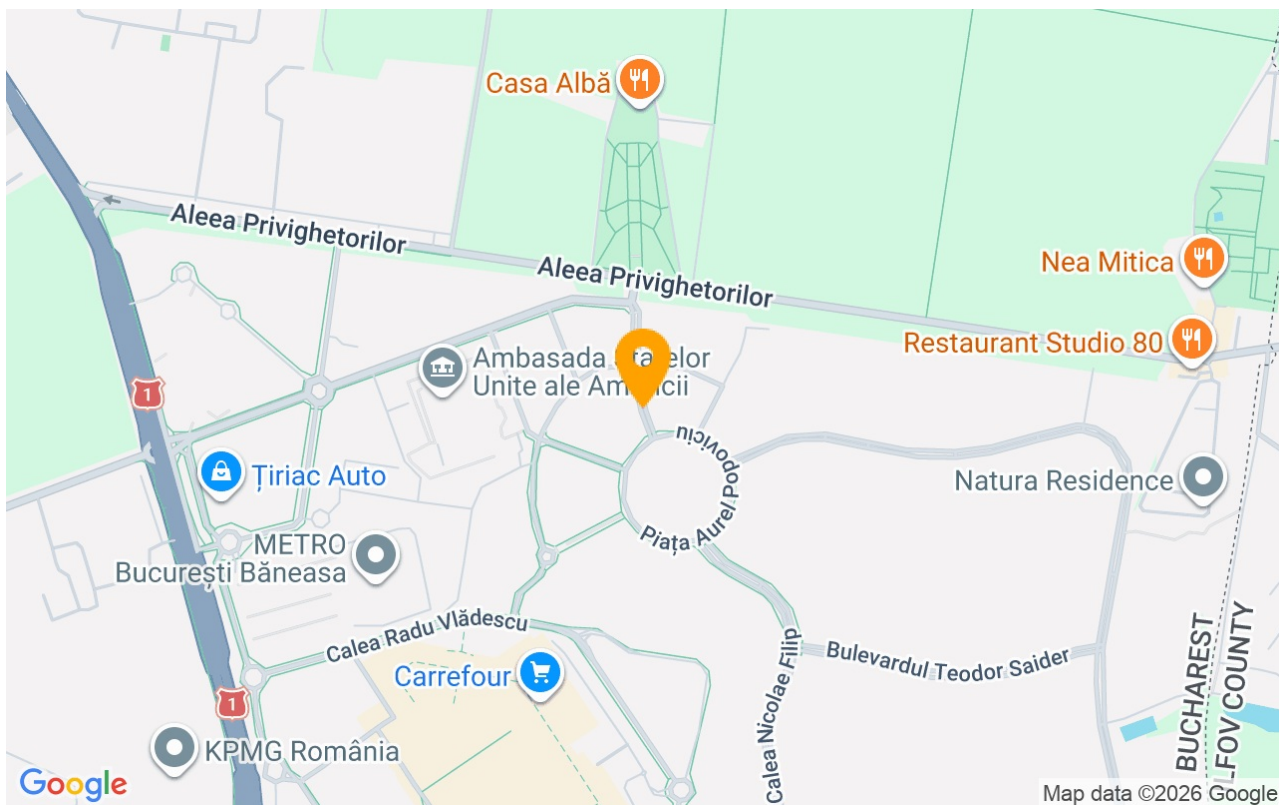
Rooms no.	4
Constructed surface	195m²
Apartment type	Apartment
Type of rooms	Independent
Type of comfort	Comfort 1
Bedrooms no.	3
Kitchens no.	1
Bathrooms no.	3
Building type	Block
Year built	2008
Config	1S+P+4
Floor	1
Balconies no.	2
State	Finished
Elevator	Yes
Parking inside	1
Storage no.	1

Amenities

-  Equipped kitchen
-  Furnished
-  Private heating
-  Air conditioning



## Location



## Photos

