

**Violetta Tudorache**

☎ +40 729 005 624

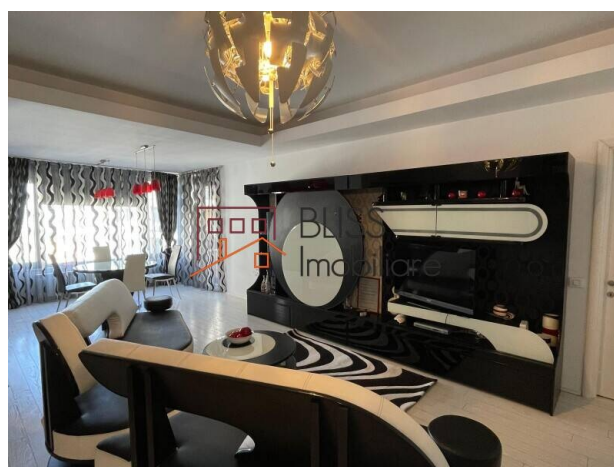
✉ contact@blissimobiliare.ro
(mailto:contact@blissimobiliare.ro)

Updated on 4 November 2025

2-Bedroom Spacious Apartment in North Area Lake View

1,150 EUR/ monthWeb Reference
#122228

📍 North Area Lake View, Aviatiei Sud, Bucharest



<https://blissimobiliare.ro/en/apartment-2-bedrooms-for-rent-aviatiei-promenada-mall-metro-pipera-bucharest-122228> (<https://blissimobiliare.ro/en/apartment-2-bedrooms-for-rent-aviatiei-promenada-mall-metro-pipera-bucharest-122228>)

Description

2-Bedroom Apartment in North Area Lake View - 120 sqm, Furnished, Parking & Storage

Panoramic Views of the Japanese Garden & Quick Access to Herăstrău Park

Discover the elegance and sophistication of this 2-bedroom apartment, located in the exclusive North Area Lake View Herăstrău residential complex, in the heart of Bucharest's northern area - Băneasa. With a usable area of 120 sqm, premium finishes, and a terrace overlooking the complex's Japanese garden, this property offers a unique and refined lifestyle.

Layout & Interior Spaces

- Bright and spacious living room with modern furniture and access to the terrace
- 2 large bedrooms, including a master bedroom with en-suite bathroom and a generous walk-in dressing room
- Fully furnished and equipped kitchen with premium appliances
- 2 elegant bathrooms, designed with attention to detail
- Terrace with panoramic views of the Japanese garden and nearby skyline towers

Features & Benefits

- Usable area: 120 sqm
- 6th floor in a modern building with elevator
- Underground parking space and storage room included
- Fully furnished and equipped, contemporary design
- Private terrace with superb views over the illuminated Japanese garden in the evening

Premium Location - Herăstrău




Located in one of the most sought-after areas in northern Bucharest, the apartment offers quick access to:

- Herăstrău Park – 7 minutes walking
- Aurel Vlaicu Metro – 7 minutes
- Promenada Mall – 10 minutes
- Bordei Park – 3 minutes
- Fine restaurants, cafés, international schools, and top business centers

Property details

| | |
|-----------------------|--------------|
| Rooms no. | 3 |
| Useable surface | 120m² |
| Apartment type | Apartment |
| Type of rooms | Independent |
| Bedrooms no. | 2 |
| Kitchens no. | 1 |
| Bathrooms no. | 2 |
| Building type | Block |
| Year built | 2009 |
| Config | 1S+P+9 |
| Floor | 6 |
| Balconies no. | 1 |
| State | Finished |
| Elevator | Yes |
| Parking inside | 1 |
| Storage no. | 1 |
| Earthquake risk class | Unclassified |

Amenities

-  Equipped kitchen
-  Furnished
-  Air conditioning

Location



Photos

