

**Violetta Tudorache**

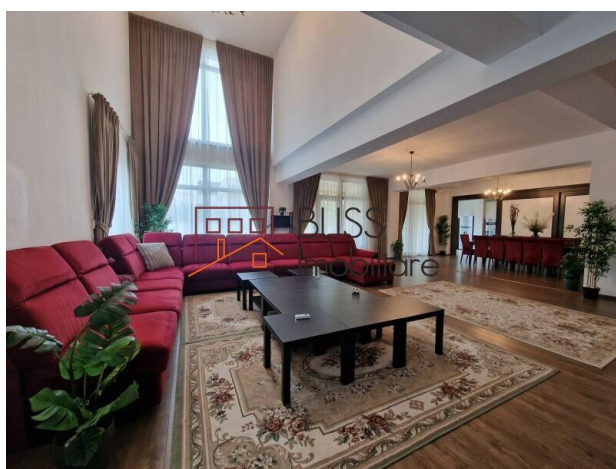
☎ +40 729 005 624

✉ contact@blissimobiliare.ro
(mailto:contact@blissimobiliare.ro)

Updated on 14 April 2025

Exclusive 6-Bedroom Villa with 1000 sqm Plot

📍 Iancu Nicolae Jolie Ville , Bucharest / Ilfov

6,000 EUR/ month
2,200,000 EURWeb Reference
#123652

<https://blissimobiliare.ro/en/villa-6-bedrooms-for-rent-iancu-nicolae-pipera-bucharest-ilfov-123652>
(<https://blissimobiliare.ro/en/villa-6-bedrooms-for-rent-iancu-nicolae-pipera-bucharest-ilfov-123652>)

Description

Exclusive property located on a quiet street in the Iancu Nicolae area, with 8 rooms and a 1000 sqm plot, with the possibility of installing a swimming pool, an impressive property, suitable for an ambassador's residence.

Convenient Access to Baneasa Shopping City and International Schools

The building has a total area of 700 sqm, arranged as follows: Ground floor: entrance hall, living room with a generous area and exit to the terrace, closed kitchen with sliding doors, a food storage room, a bedroom/office with bathroom, a space for bathing and clothes dryer, a toilet for guests,

The floor has 4 bedrooms with 4 bathrooms and dressing rooms in each room,

The attic has a bedroom, a bathroom with shower and a generous space in which 2 more bedrooms can be arranged.

The basement has a storage room and a technical room.







The villa can be rented furnished or unfurnished, depending on the client's requirements.

The area where the villa is located has easy access to the commercial area of Baneasa Shopping City, Jolie Ville, international schools in the area (Lycee Francais Anna de Noailles, Cambridge School, British School, American School, Mark Twain International School), restaurants, shops (Lidl, Mega Image, Profi)

Property details

Rooms no.	8
Useable surface	700m²
Constructed surface	780m²
Bedrooms no.	6
Kitchens no.	1
Bathrooms no.	5
Toilets no.	2
Building type	Villa
Year built	2020
State	Finished
Total land	1000m²
Print	250m²
Courtyard	750m²
Parking inside	2
Parking outside	4
Storage no.	1

Amenities

-  Equipped kitchen
-  Dishwasher
-  Furnished (Willing to take out)
-  Private heating
-  Suitable for office
-  Air conditioning

Location



Photos

