




**Violetta Tudorache**

+40 729 005 624

contact@blissimobiliare.ro  
(mailto:contact@blissimobiliare.ro)

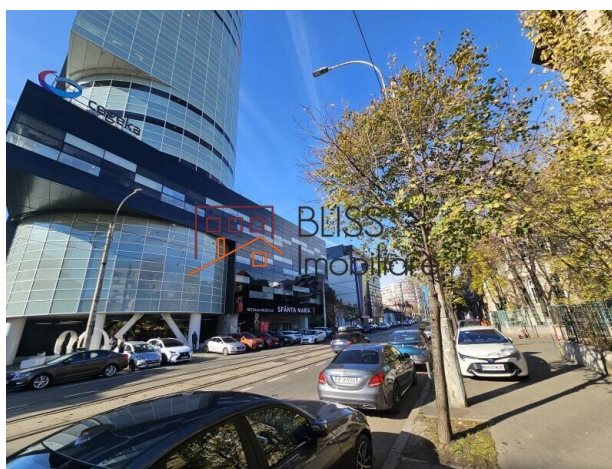
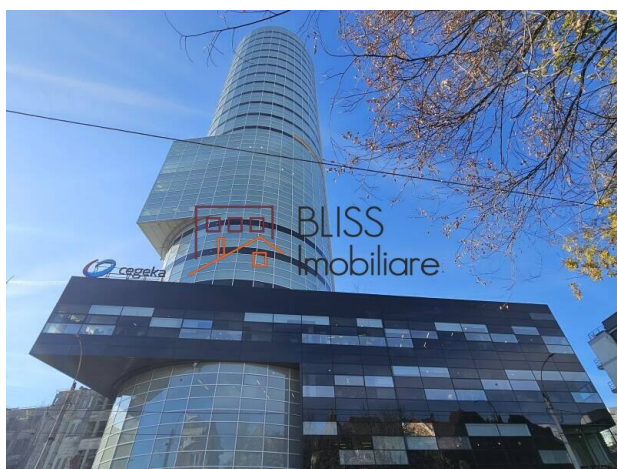
Updated on 20 November 2024

## office space

 Tower Center International (TCI), Piata  
Victoriei, Bucharest

**11,928 EUR +VAT / month**

Web Reference  
**#124878**



<https://blissimobiliare.ro/en/office-space-for-rent-piata-victoriei-bucharest-124878>  
(<https://blissimobiliare.ro/en/office-space-for-rent-piata-victoriei-bucharest-124878>)

## Description

Tower Center International (TCI): Class A Office Spaces Redefined

Located in the vibrant heart of Bucharest, just steps from Piața Victoriei, Tower Center International (TCI) offers premier Class A office spaces tailored for modern businesses. With its sleek architectural design and panoramic views of the city, TCI combines functionality with sophistication, creating an inspiring environment for productivity and innovation.

Key Highlights:

- **Prime Location:** Enjoy unparalleled connectivity to Bucharest's major business hubs, metro lines, and cultural landmarks.
- **State-of-the-Art Facilities:** Fully equipped with high-speed internet, modern HVAC systems, and flexible layouts to suit any business need.
- **Green & Sustainable:** Energy-efficient design with eco-friendly certifications, promoting a sustainable work environment.
- **Exclusive Amenities:** On-site parking, 24/7 security, premium meeting rooms, and relaxation areas.
- A rentable area of 22,500 m<sup>2</sup> spread across 22 floors above the ground floor.

Make a statement for your business at TCI, where elegance meets efficiency, and opportunity thrives at the heart of the capital. Your future workspace awaits!

Location

The location offers excellent accessibility, as Piața Victoriei is one of Bucharest's major transportation hubs, intersecting key road arteries: Calea Victoriei, Iancu de Hunedoara, Aviatorilor, Nicolae Titulescu, and Lascăr Catargiu. Public transportation in the area is highly developed, including 2 metro lines, buses, and trams.

- Status: Completed
- Completion Date: 2012
- Levels: 3S+G+22
- Rentable Area: 22,500 m<sup>2</sup>
- Current Floor Area: 980 m<sup>2</sup>
- Parking Spaces: 140

#### Office Space Amenities

- Commercial Area
- Private Parking
- Banking Point
- Pharmacy
- Medical Point

#### Facilities


- HVAC System
- Raised Flooring
- 24/7 Security
- Elevators
- Smoke/Fire Detectors
- Sprinkler System





## Property details


<b>Constructed surface</b>	568m <sup>2</sup>
<b>Kitchens no.</b>	1
<b>Toilets no.</b>	4
<b>Building type</b>	Block
<b>Year built</b>	2012
<b>State</b>	Finished
<b>Elevator</b>	Yes
<b>From developer</b>	Yes
<b>Common service charges</b>	4.00 EUR

## Amenities

 Equipped kitchen

 Not furnished

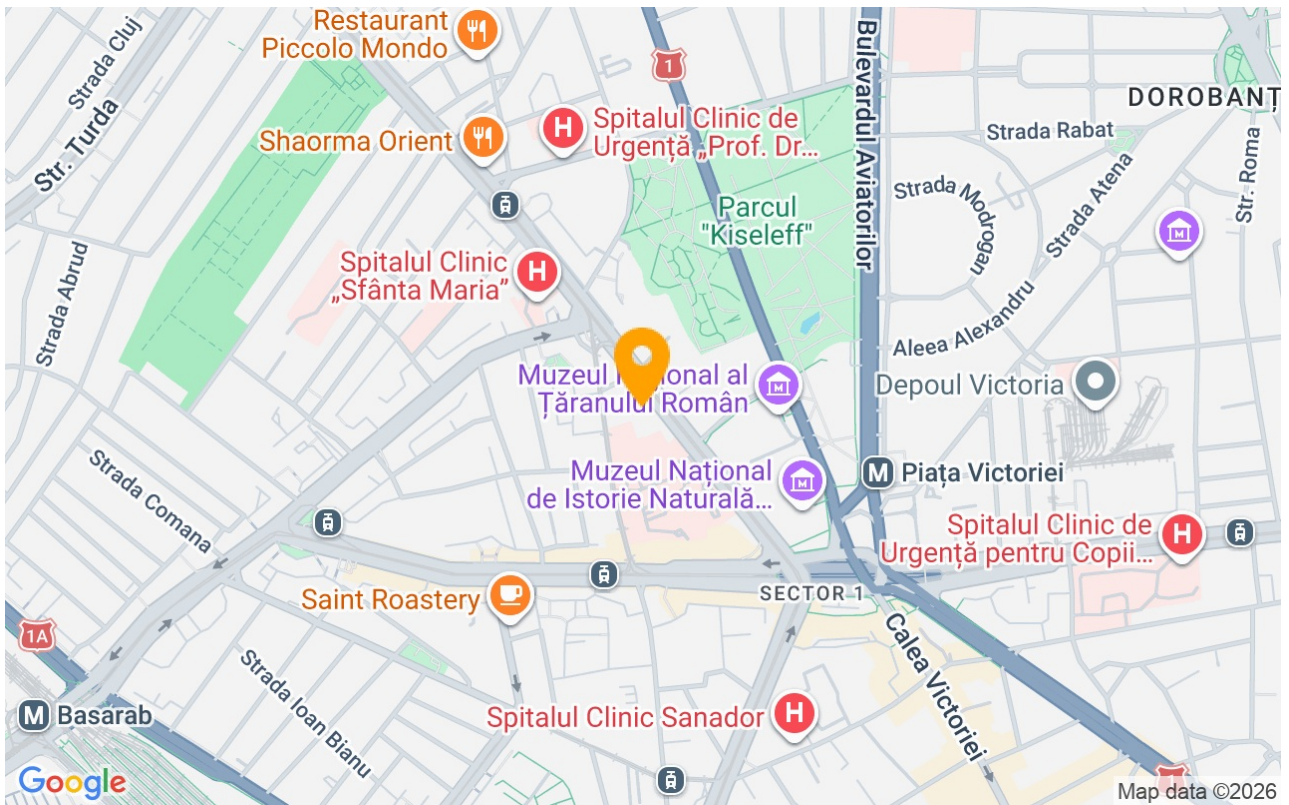
 Building heating

 Suitable for office

 Air conditioning



## Location



## Photos

