



**Violetta Tudorache**

+40 729 005 624

[contact@blissimobiliare.ro](mailto:contact@blissimobiliare.ro)  
(<mailto:contact@blissimobiliare.ro>)

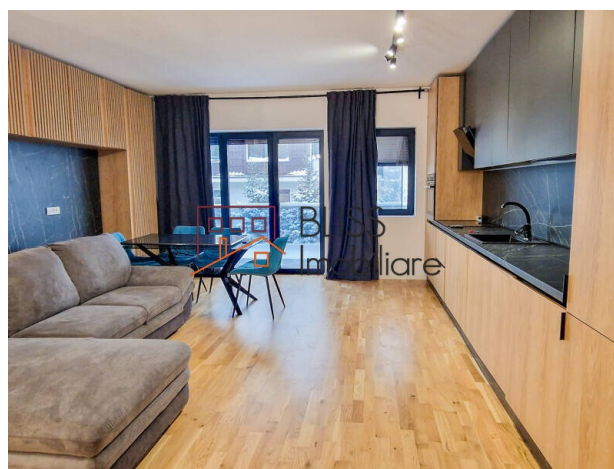
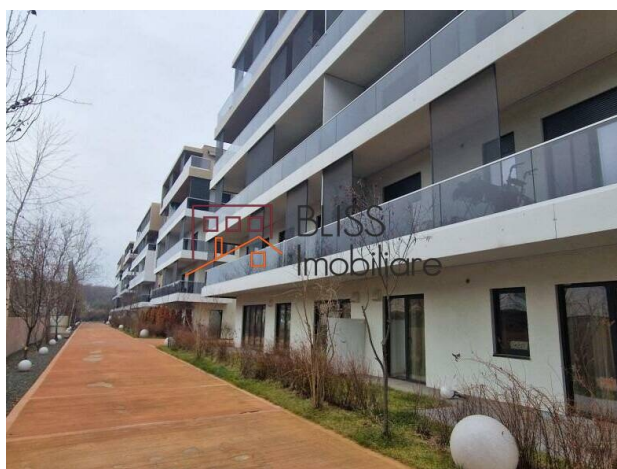
Updated on 28 March 2025

## Modern 2-Room Apartment

Grand Park Pipera Residence, Iancu Nicolae,  
Bucharest / Ilfov

Web Reference

**#125790**



<https://blissimobiliare.ro/en/apartment-1-bedroom-for-rent-iancu-nicolae-pipera-bucharest-ilfov-125790>  
(<https://blissimobiliare.ro/en/apartment-1-bedroom-for-rent-iancu-nicolae-pipera-bucharest-ilfov-125790>)

### Description

**Modern 2-Room Apartment in Grand Park Complex, Iancu Nicolae Area**

## Premium Amenities, Ideal Location, and Quick Access to Key Areas

This elegant and modern 2-room apartment, located on the 3rd floor of a building completed in 2021, offers the comfort and privacy you need in an excellent location, in the Iancu Nicolae area, within the Grand Park residential complex.

### A Spacious and Well-Designed Home :

- Open-space living room with kitchen – A bright and generous space, ideal for relaxation and socializing.
- Master bedroom – The perfect place for a restful sleep, with enough space for high-quality furniture.
- Modern bathroom – Equipped with premium finishes and state-of-the-art installations.
- Generous 17 sqm balcony – A perfect extension of the living room, ideal for moments of outdoor relaxation.

Premium Amenities for Your Comfort

The apartment is equipped with high-quality features, including VRF air conditioning for optimal comfort in every season and underfloor heating for uniform heat distribution.

Schuco triple-glazed windows – Providing excellent thermal and sound insulation.

State-of-the-art systems – The apartment's design incorporates efficient solutions for comfort and energy efficiency.

Moreover, the Grand Park complex offers exclusive amenities for relaxation and health, including a generous swimming pool, Finnish sauna, fully equipped gym, locker rooms, and showers.

**Ideal Location with Quick Access to Everything You Need**

The apartment is located in a quiet area, yet very well connected, with quick access to international schools, supermarkets, restaurants, and Băneasa Forest. Thanks to 24/7 security and premium finishes, this apartment guarantees both safety and comfort.

Grand Park is the ideal choice for those who want a modern home, with easy access to key areas of the Pipera region, combining peace with accessibility.

**Key Features:**

- Generous 17 sqm balcony
- Premium amenities: swimming pool, sauna, gym
- State-of-the-art features: VRF air conditioning, underfloor heating, triple-glazed windows
- Quick access to schools, supermarkets, and Băneasa Forest






This is the perfect apartment for a modern, comfortable, and elegant lifestyle!



Property details

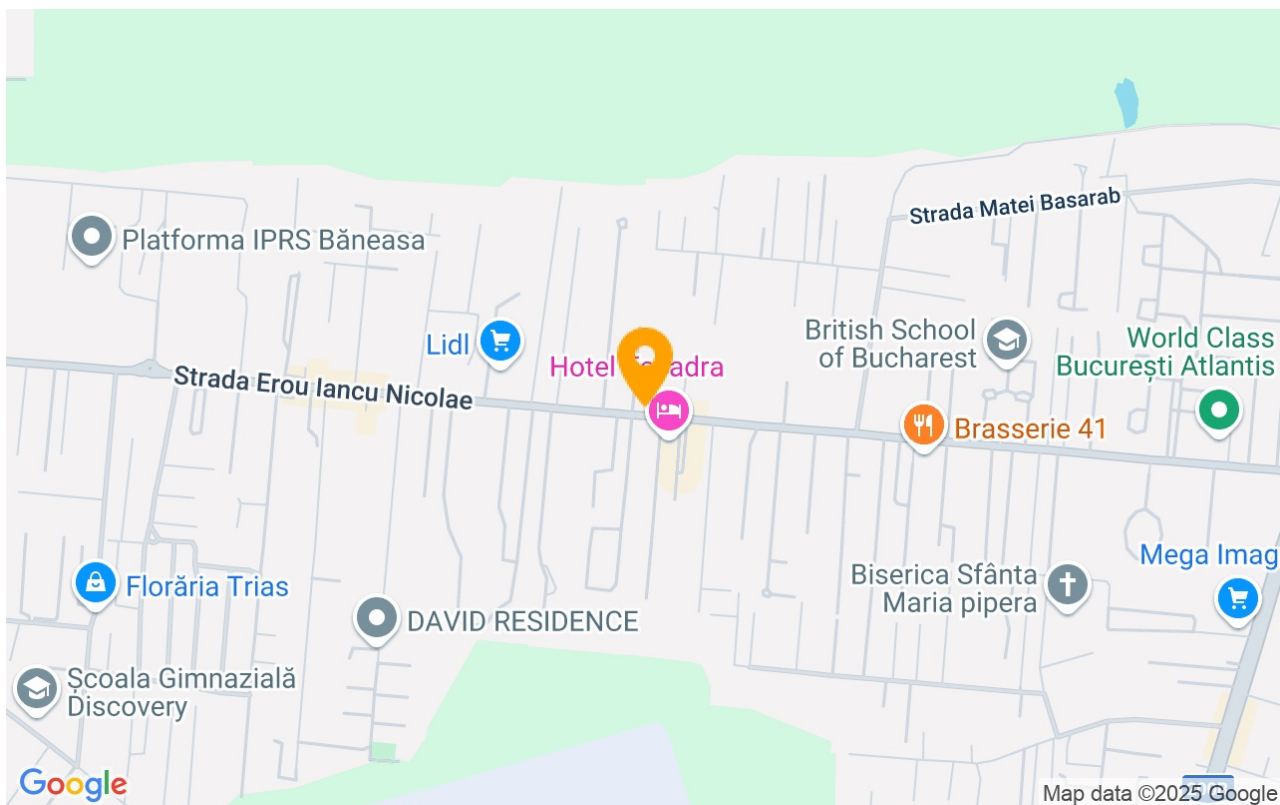
Rooms no.	2
Constructed surface	77m²
Apartment type	Apartment
Type of rooms	Independent
Bedrooms no.	1
Kitchens no.	1
Bathrooms no.	1
Building type	Block
Year built	2021
Config	1S+P+4
Floor	3
Balconies no.	1
State	Finished
Elevator	Yes
Parking inside	1

Amenities

-  Equipped kitchen
-  Furnished
-  Building heating
-  Air conditioning
-  Swimming pool



## Location



## Photos

