



Violetta Tudorache

+40 729 005 624

contact@blissimobiliare.ro
(mailto:contact@blissimobiliare.ro)

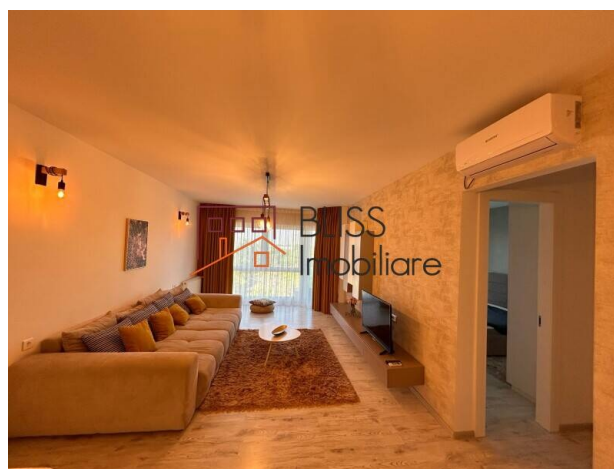
Updated on 22 December 2025

1 bedroom apartment

Floreasca Residence, Floreasca Nord,
Bucharest

899 EUR/ month

Web Reference
#126794



<https://blissimobiliare.ro/en/apartment-1-bedroom-for-rent-floreasca-barbu-vacarescu-bucharest-126794> (<https://blissimobiliare.ro/en/apartment-1-bedroom-for-rent-floreasca-barbu-vacarescu-bucharest-126794>)

Description

Luxury 1-Bedroom Apartment in Floreasca Residence - 5th Floor, Panoramic View, Parking Included

Discover a stylish and refined apartment located in the prestigious Floreasca Residence – one of the most sought-after residential areas in Bucharest, near Verdi Park and the Barbu Văcărescu business district. Situated on the 5th floor of an 8-story building, this 2-room apartment impresses with its generous space, contemporary design, and panoramic views of surrounding green areas.

Modern Design & Functional Layout

- Total usable area: 70 sqm, including a 9 sqm balcony
- Spacious and bright living room, with a dedicated dining area and direct access to the balcony
- Elegant master bedroom with a built-in dressing and balcony access
- Separate kitchen, fully equipped with modern appliances (oven, gas cooktop, hood, refrigerator)
- Modern bathroom with high-quality finishes
- Open-view balcony, ideal for relaxing or enjoying your morning coffee

Premium Features & Amenities

- Fully furnished and equipped with new, contemporary furniture
- Individual central heating, air conditioning, video intercom, Smart TV
- Washing machine, ample storage space

- Underground parking space included in the price

Terms & Additional Information

- Security deposit: 1.5 months' rent
- Available immediately
- Pets not allowed
- Not suitable for families with small children

Prime Location - Floreasca / Barbu Văcărescu





This apartment offers a peaceful yet well-connected lifestyle, with easy access to:

- Verdi Park and Lake Floreasca
- Promenada Mall, top-rated restaurants, cafes, and gyms
- Metro stations, public transport, and Pipera business hub

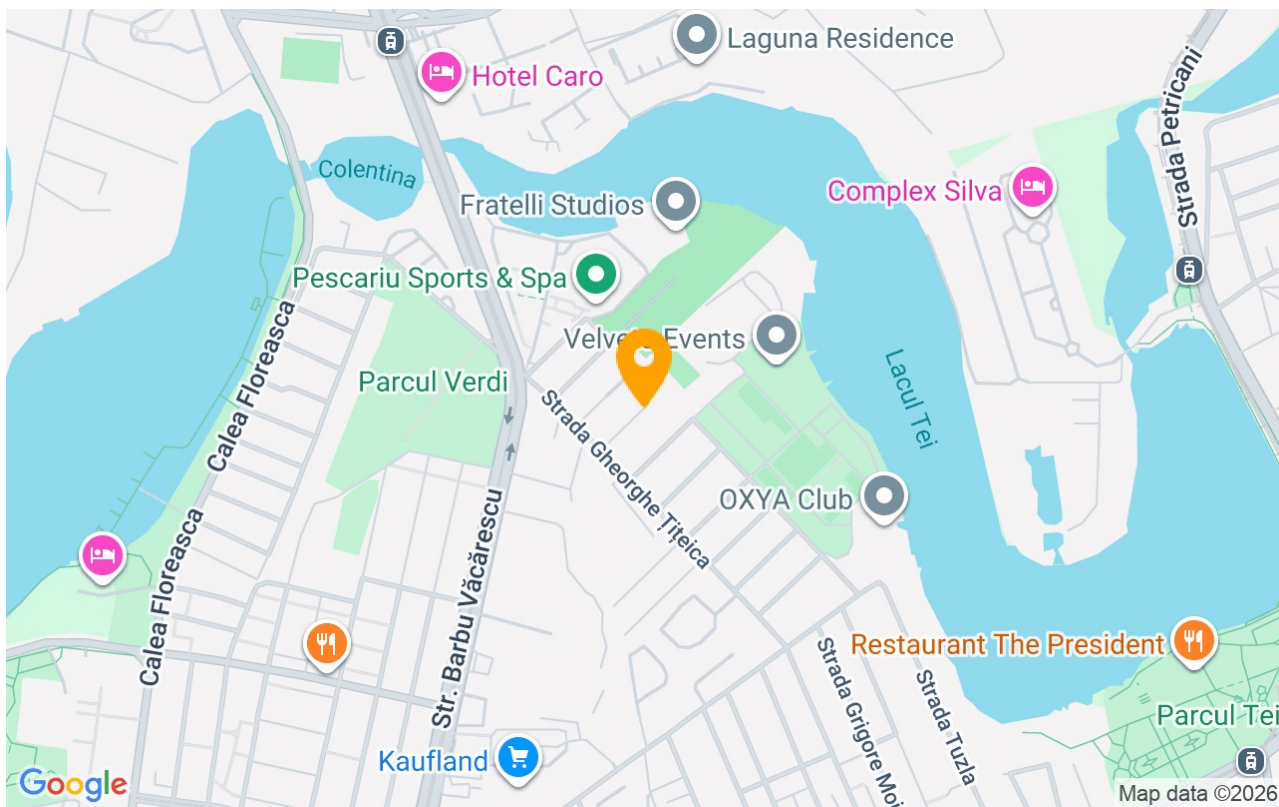
Property details

Rooms no.	2
Useable surface	61m²
Constructed surface	70m²
Apartment type	Apartment
Type of rooms	Semi-independent
Type of comfort	Comfort 1
Bedrooms no.	1
Kitchens no.	1
Bathrooms no.	1
Building type	Block
Year built	2012
Config	P+6
Floor	5
Balconies no.	1
State	Finished
Elevator	Yes
Parking inside	1
Parking outside	1
Earthquake risk class	Unclassified

Amenities

-  Equipped kitchen
-  Furnished
-  Building heating
-  Air conditioning

Location



Photos

