



**Violetta Tudorache**

+40 729 005 624

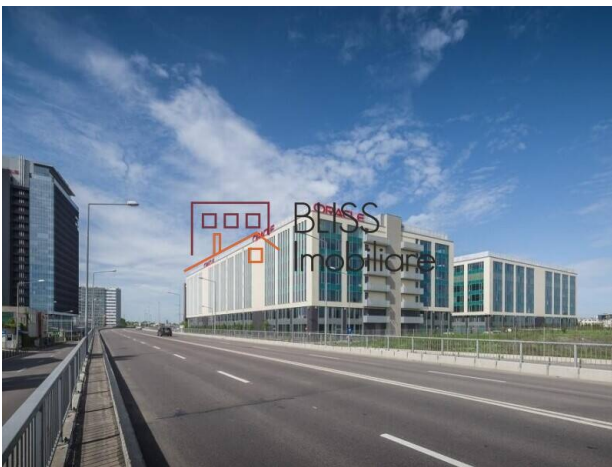
contact@blissimobiliare.ro  
(mailto:contact@blissimobiliare.ro)

Updated on 7 September 2025

## Premium Office Spaces in Floreasca Park - Building B

Web Reference  
**#142661**

📍 Floreasca Park Building A, Aviatiei, Bucharest



<https://blissimobiliare.ro/en/office-space-for-rent-aviatiei-promenada-mall-metro-pipera-bucharest-142661> (<https://blissimobiliare.ro/en/office-space-for-rent-aviatiei-promenada-mall-metro-pipera-bucharest-142661>)

### Description

**Floreasca Park - Building B, 2nd Floor: Premium Office Space in Bucharest's Leading Business Hub**

## Top Facilities and Strategic Advantages in Bucharest's Business Hub

In today's highly competitive office market, where image and performance make the difference, choosing a premium location becomes a strategic decision. Floreasca Park - Building B stands as a landmark project in the north of Bucharest, offering modern, sustainable, and flexible office spaces designed for companies aiming to combine prestige with efficiency.

### Available Space - 2nd Floor

The 2nd floor of Building B provides a generous and well-configured layout, perfectly suited for organizations seeking a modern and representative headquarters:

- 1,500 sqm usable area / 1,606 sqm GLA
- Open-space layout with flexible partitioning options
- Bright, airy spaces with large glazed surfaces for a healthy, inspiring work environment
- High energy efficiency, supported by modern technologies designed to reduce operational costs

This office floor is ideal for corporate headquarters, IT companies, consultancy firms, BPOs, and support centers looking for a strategic location in Bucharest.

### **Premium Facilities and Amenities**

- Contemporary office building with glass façade and premium finishes
- Excellent public transport access – metro, tram, and bus lines within walking distance
- High-speed elevators, elegant reception, 24/7 security, and advanced CCTV system
- Underground and above-ground parking for employees and visitors
- Maximum flexibility for layout customization and fit-out
- Sustainable design with certifications for energy efficiency and workplace comfort

### **Why Choose Floreasca Park - Building B?**

- Strategic location in Bucharest's most dynamic office hub – Floreasca-Barbu Văcărescu
- Excellent connectivity to the city center and Henri Coandă International Airport
- Prestigious corporate image in a landmark office building
- Immediate availability – ready-to-occupy space with no waiting time



## Property details

|                               |                    |
|-------------------------------|--------------------|
| <b>Useable surface</b>        | 1500m <sup>2</sup> |
| <b>Constructed surface</b>    | 1606m <sup>2</sup> |
| <b>Kitchens no.</b>           | 1                  |
| <b>Bathrooms no.</b>          | 1                  |
| <b>Building type</b>          | Block              |
| <b>Year built</b>             | 2013               |
| <b>State</b>                  | Finished           |
| <b>Elevator</b>               | Yes                |
| <b>Common service charges</b> | 6263.00 EUR        |

## Amenities



Not furnished



Building heating



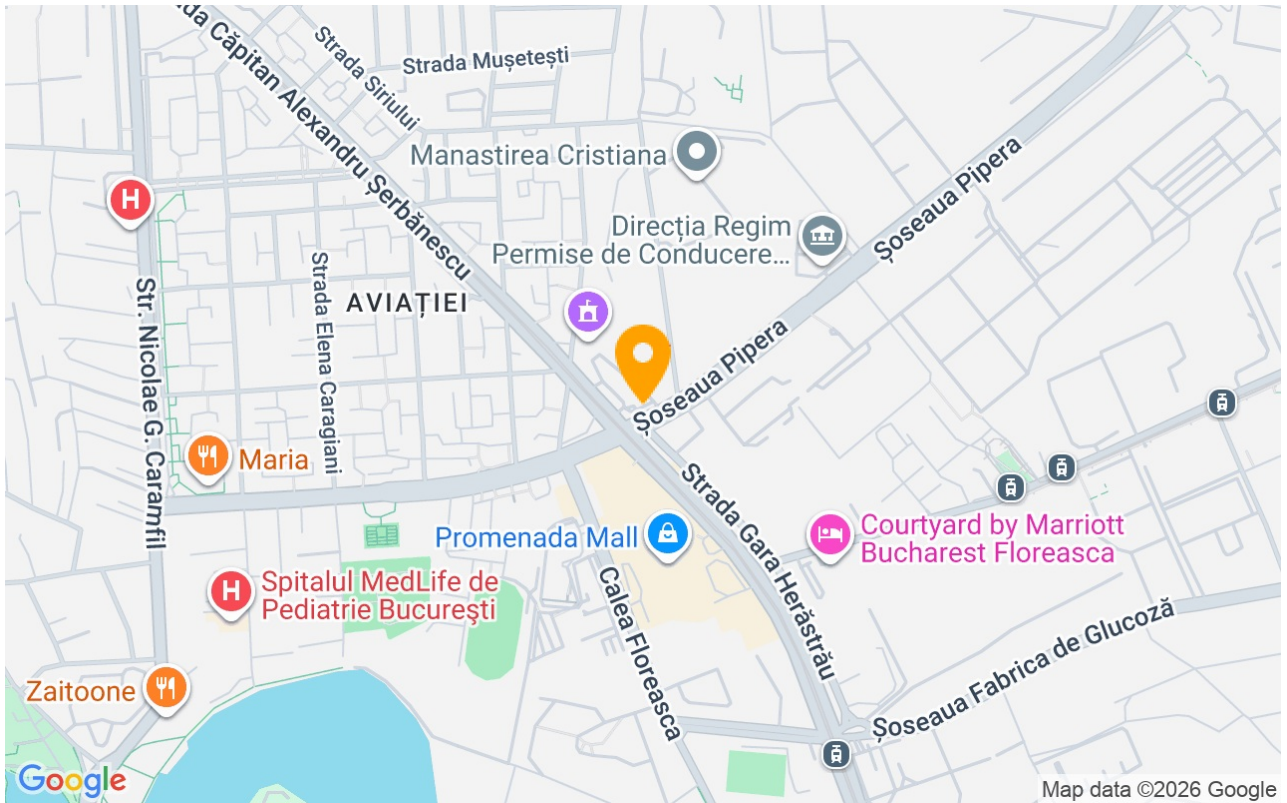
Suitable for office



Air conditioning



## Location



## Photos

