



**Violetta Tudorache**

+40 729 005 624

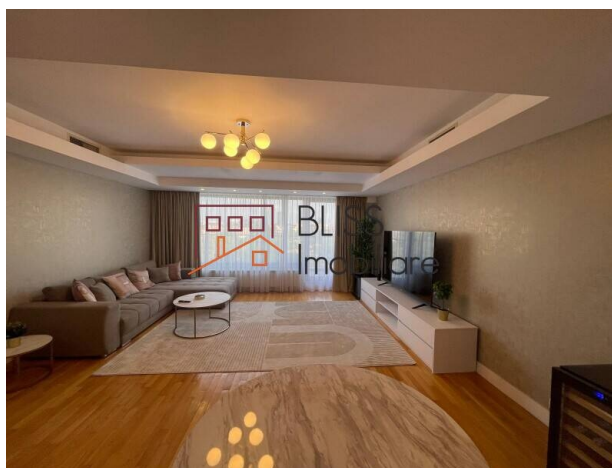
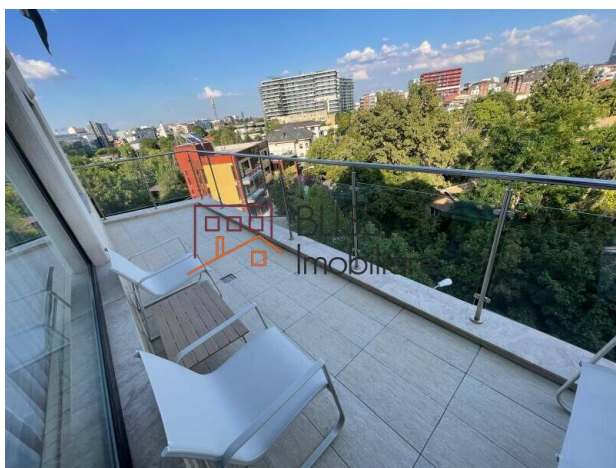
contact@blissimobiliare.ro  
(mailto:contact@blissimobiliare.ro)

Updated on 3 December 2025

## 2-Bedroom Apartment in Herăstrău - 2 Terraces, Fully Furnished

Web Reference  
**#142826**

📍 Herastrau, Bucharest



<https://blissimobiliare.ro/en/apartment-2-bedrooms-for-rent-herastrau-nordului-bucharest-142826>  
(<https://blissimobiliare.ro/en/apartment-2-bedrooms-for-rent-herastrau-nordului-bucharest-142826>)

### Description

#### 2-Bedroom Apartment in Herăstrău - 110 sqm, Fully Furnished, 2 Terraces

## Modern comfort with 2 terraces and optional underground parking

Experience modern comfort in this spacious and elegant 2-bedroom apartment, located on the 5th floor of a contemporary building, just 1 minute away from the main entrance of Herăstrău Park. With a usable area of 110 sqm and two generous terraces, this property perfectly combines the tranquility of a green area with quick access to all the city's amenities.

### Layout & Features

- Usable area: 110 sqm
- Bright and spacious living room with lounge area and direct access to the terrace
- Modern kitchen, fully furnished and equipped
- Master bedroom with dressing area and access to terrace
- Second bedroom - ideal as children's room, office, or guest bedroom
- Two stylish bathrooms with high-quality finishes
- 2 sunny terraces, perfect for outdoor relaxation

- Fully furnished and equipped, move-in ready
- Premium finishes, air conditioning

### **Facilities & Advantages**

- Option to rent an underground parking space (extra cost)
- Modern building, well-maintained
- Secure access and clean common areas

### **Premium Location - Herăstrău**

One of Bucharest's most prestigious residential areas, offering direct access to:

- Herăstrău Park - just 1 minute away
- Fine restaurants and cafés on Șoseaua Nordului
- Promenada Mall and the Barbu Văcărescu - Pipera business district
- Aurel Vlaicu metro station, DN1, and Otopeni Airport



## Property details


<b>Rooms no.</b>	3
<b>Useable surface</b>	110m <sup>2</sup>
<b>Apartment type</b>	Apartment
<b>Type of rooms</b>	Independent
<b>Bedrooms no.</b>	2
<b>Kitchens no.</b>	1
<b>Bathrooms no.</b>	2
<b>Building type</b>	Block
<b>Year built</b>	2009
<b>Config</b>	1S+P+6
<b>Floor</b>	5
<b>Balconies no.</b>	2
<b>State</b>	Finished
<b>Elevator</b>	Yes


## Amenities


 Equipped kitchen

 Dishwasher

 Furnished

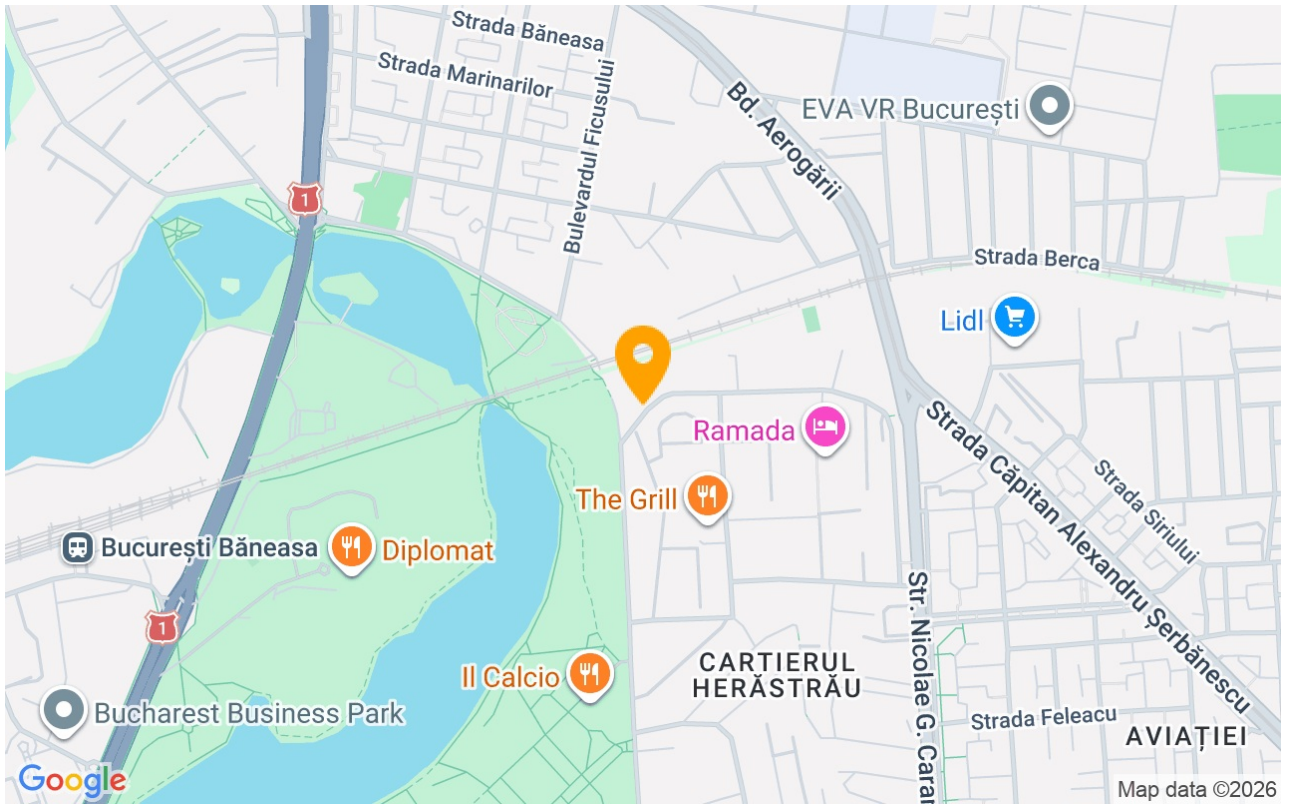
 Building heating

 Suitable for office

 Air conditioning



## Location



## Photos

