



**Violetta Tudorache**

+40 729 005 624

contact@blissimobiliare.ro  
(mailto:contact@blissimobiliare.ro)

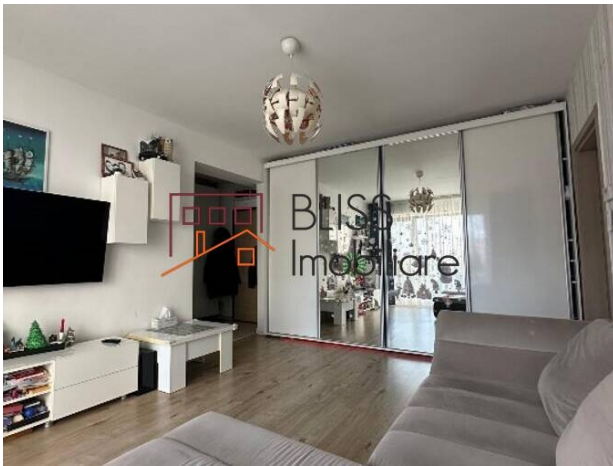
Updated on 20 April 2026

## 2-Bedroom Apartment with Private Garden and Parking

**145,000 EUR**

Web Reference  
**#144819**

📍 Greenfield Cartierul Salcamlor, Baneasa Padure, Bucharest



<https://blissimobiliare.ro/en/apartment-2-bedrooms-for-sale-iancu-nicolae-pipera-bucharest-144819>  
(<https://blissimobiliare.ro/en/apartment-2-bedrooms-for-sale-iancu-nicolae-pipera-bucharest-144819>)

### Description

This apartment stands out through its well-balanced layout and its features designed for real everyday comfort: a 30 sqm private garden, a large balcony and an included parking space. With 75.1 sqm of interior usable space and 81.8 sqm total including the balcony, the property offers a practical and airy setting that suits a modern lifestyle.

## Spacious living area, large balcony and everyday comfort

The daytime area is centered around a spacious 24.3 sqm living room, complemented by an 8.3 sqm open-space kitchen that creates a fluid and welcoming environment. The two bedrooms, measuring 15.2 sqm and 15.7 sqm, are well proportioned and support an efficient use of space, while the two bathrooms add an important layer of comfort and flexibility.

Located on the ground floor, the apartment benefits from an easy indoor-outdoor connection, enhanced by the private garden and the large balcony accessed from the living area. The property is furnished, includes an equipped kitchen, air conditioning and building-based heating, and is set in a completed building, making it ready for immediate use.

Its position within an already established residential setting, together with the efficient layout, outdoor extensions and essential amenities, makes this apartment a compelling choice for those looking for comfort, functionality and a home that fits smoothly into an active lifestyle.

Discover a property that brings together usable space, practical details and daily comfort. For more information or to schedule a viewing, the BLISS Immobiliare team is here to help.



## Property details

<b>Rooms no.</b>	3
<b>Useable surface</b>	75m <sup>2</sup>
<b>Constructed surface</b>	5281m <sup>2</sup>
<b>Apartment type</b>	Apartment
<b>Type of rooms</b>	Semi-independent
<b>Type of comfort</b>	Comfort 1
<b>Bedrooms no.</b>	2
<b>Kitchens no.</b>	1
<b>Bathrooms no.</b>	2
<b>Building type</b>	Block
<b>Config</b>	
<b>Floor</b>	Groundfloor
<b>Balconies no.</b>	1
<b>State</b>	Finished
<b>Parking outside</b>	1

## Amenities

 Equipped kitchen

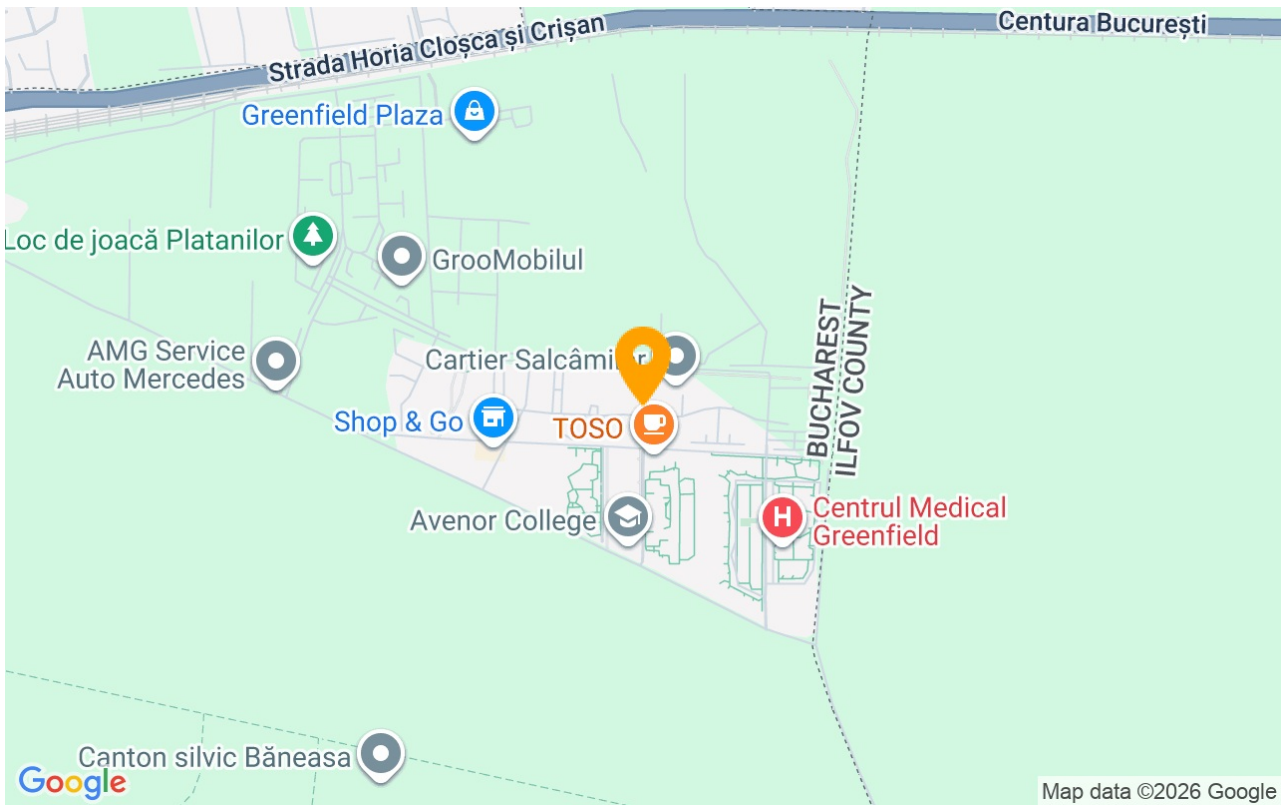
 Furnished

 Building heating

 Air conditioning



## Location



## Photos

