



**Violetta Tudorache**

+40 729 005 624

contact@blissimobiliare.ro  
(mailto:contact@blissimobiliare.ro)

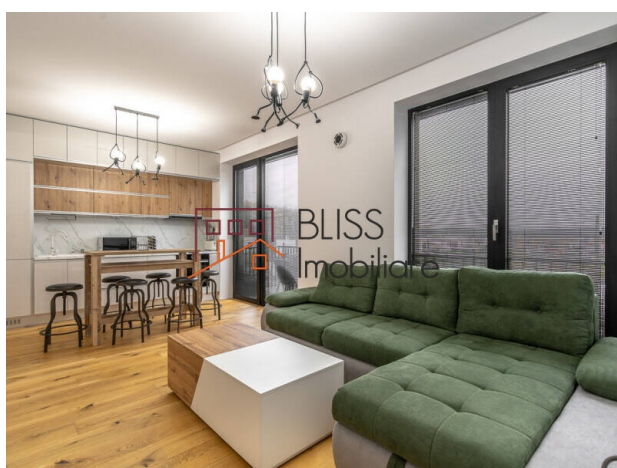
Updated on 13 May 2026

## Premium Furnished 1-Bedroom Apartment with Balcony and Forest View

**164,000 EUR**

Web Reference  
**#145577**

Amber Forest, Comuna Tunari, Bucharest /  
Ilfov



<https://blissimobiliare.ro/en/apartment-1-bedroom-for-sale-otopeni-tunari-bucharest-ilfov-145577>  
(<https://blissimobiliare.ro/en/apartment-1-bedroom-for-sale-otopeni-tunari-bucharest-ilfov-145577>)

### Description

This premium 1-bedroom apartment offers a modern, peaceful and well-balanced living experience in a green, secure and carefully planned environment. With a total usable area of 54.50 sqm, the home is fully furnished and equipped, featuring South-West orientation and a direct view toward the forest.

## Fully Furnished Home in a Sustainable Residential Community

The interior is efficiently and elegantly arranged, including an entrance hallway, an 18 sqm bright living area, a 5 sqm open kitchen, a 16.50 sqm master bedroom, a 5.60 sqm bathroom and a 4.60 sqm open balcony. The kitchen is fully furnished and fitted with premium appliances, while the custom-made furniture supports both modern design and everyday functionality.

The apartment benefits from premium finishes and features, including Reynaers PVC-Aluminium joinery with triple glazing, Pinum interior doors with magnetic closing, secured entrance door, underfloor heating, triple-layer parquet, centralized ventilation system, Roca sanitary ware, smart home system and multiple storage spaces.

The building is completed, has a low-rise P+3E layout, elevator, heat pump and access to an outdoor parking space equipped with an electric charging station. The residential community offers controlled access, permanent security, green areas, parks, a sports center, educational facilities, commercial area, medical services, pedestrian zones, recreation spaces and bicycle lanes.

The location in the Pipera-Tunari area provides a strong balance between natural surroundings and quick access to Bucharest, DN1, A3 and the ring road. It is a suitable home for those looking for comfort, efficiency, safety and a lifestyle connected to nature.

For further details and viewings, the BLISS Imobiliare team is ready to offer dedicated guidance and professional real estate support.



## Property details

<b>Rooms no.</b>	2
<b>Useable surface</b>	50m <sup>2</sup>
<b>Constructed surface</b>	55m <sup>2</sup>
<b>Apartment type</b>	Apartment
<b>Type of rooms</b>	Semi-independent
<b>Type of comfort</b>	Deluxe
<b>Bedrooms no.</b>	1
<b>Kitchens no.</b>	1
<b>Bathrooms no.</b>	1
<b>Building type</b>	Block
<b>Year built</b>	2023
<b>Config</b>	P+3
<b>Floor</b>	2
<b>Balconies no.</b>	1
<b>State</b>	Finished
<b>Elevator</b>	Yes
<b>Parking outside</b>	1

## Amenities

 Equipped kitchen

 Dishwasher

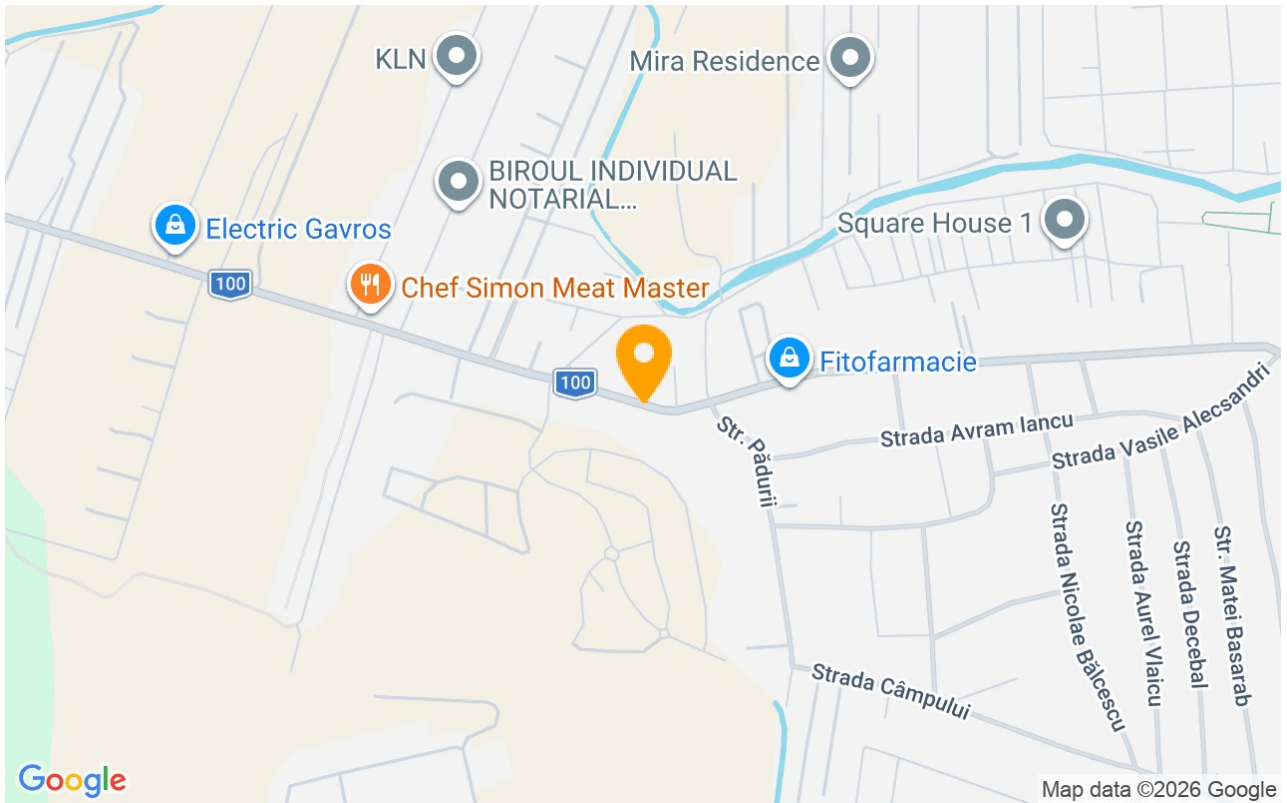
 Furnished

 Building heating

 Air conditioning



## Location



## Photos

