



Violetta Tudorache

+40 729 005 624

contact@blissimobiliare.ro
(mailto:contact@blissimobiliare.ro)

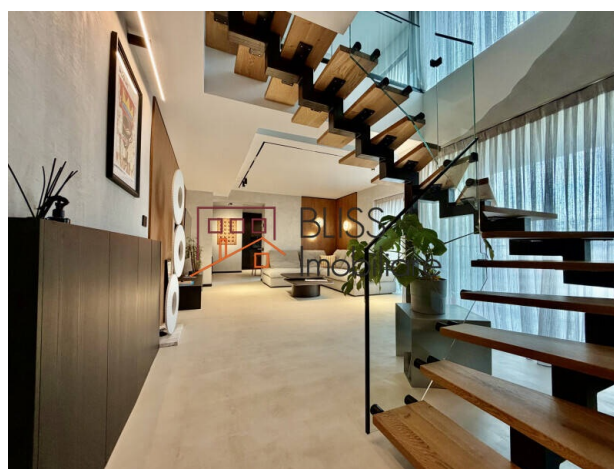
Updated on 10 June 2026

Spectacular 3-Bedroom Penthouse with 100mp Terrace

4,500 EUR +VAT / month

Web Reference
#145664

 Baneasa Herastrau, Bucharest



<https://blissimobiliare.ro/en/apartment-penthouse-3-bedrooms-for-rent-herastrau-nordului-bucharest-145664> (<https://blissimobiliare.ro/en/apartment-penthouse-3-bedrooms-for-rent-herastrau-nordului-bucharest-145664>)

Description

3-Bedroom Penthouse in Herăstrău - 121 sqm + 100 sqm Panoramic Terrace, Luxury Furnished, 2 Parking Spaces

121 sqm | 3 Bedrooms | 3 Bathrooms | Terrace 100 sqm | 2 Parking

Design and Exclusivity at Height in Northern Bucharest's Most Coveted Area

We present an exceptional 3-bedroom penthouse spread across the 4th and 5th floors of a modern building completed in 2022, in the Herăstrău area. With a usable area of 121 sqm and a total area of 227 sqm, complemented by a fully equipped 100 sqm private panoramic terrace with outdoor furniture and an exterior kitchen area, this property defines a standard of living rarely available in Bucharest.

The interior has been conceived with attention to every detail - designer furniture by Roche Bobois, a premium kitchen, high-quality finishes and a carefully crafted lighting concept, all contributing to an elegant and refined atmosphere, ready for immediate occupancy.

Layout & Distribution Across Levels

4th Floor:

- Generous living room with semi-open kitchen
- Guest WC
- Storage spaces

5th Floor:

- 2 master bedrooms
- Third bedroom, ideal as a home office or guest room
- 3 modern bathrooms with premium finishes
- Multiple integrated storage spaces
- Direct access to the 100 sqm panoramic terrace

Panoramic Terrace - 100 sqm:

- Fully furnished with outdoor furniture
- Exterior kitchen area
- Open views, ideal for relaxation and entertaining

Amenities & Features

- Fully furnished with designer furniture – Roche Bobois
- Premium fully equipped kitchen with state-of-the-art appliances
- Underfloor heating + building central heating system
- Air conditioning
- High-quality finishes – premium sanitaryware, hardwood flooring and ceramics
- Dishwasher

Building Facilities

- Modern B+G+6 building, completed in 2022
- 2 underground parking spaces included
- Storage room included
- Modern elevator

Location - Herăstrău | Nordului

A top-tier position in the Herăstrău area, with easy access to:

- Herăstrău Park – in immediate proximity
- Premium restaurants and sports clubs
- Aviației-Pipera business hub
- Promenada Mall and metro
- International schools and top medical services


A one-of-a-kind property for executives, expats or families seeking the highest standard of design, comfort and location available in northern Bucharest.

Property details


Rooms no.	4
Useable surface	121m ²
Constructed surface	227m ²
Apartment type	Penthouse apartment
Type of rooms	Independent
Bedrooms no.	3
Kitchens no.	1
Bathrooms no.	3
Building type	Block
Year built	2023
Config	1S+P+5
Floor	4
Balconies no.	2
State	Finished
Elevator	Yes
Parking inside	2


Amenities

 Equipped kitchen

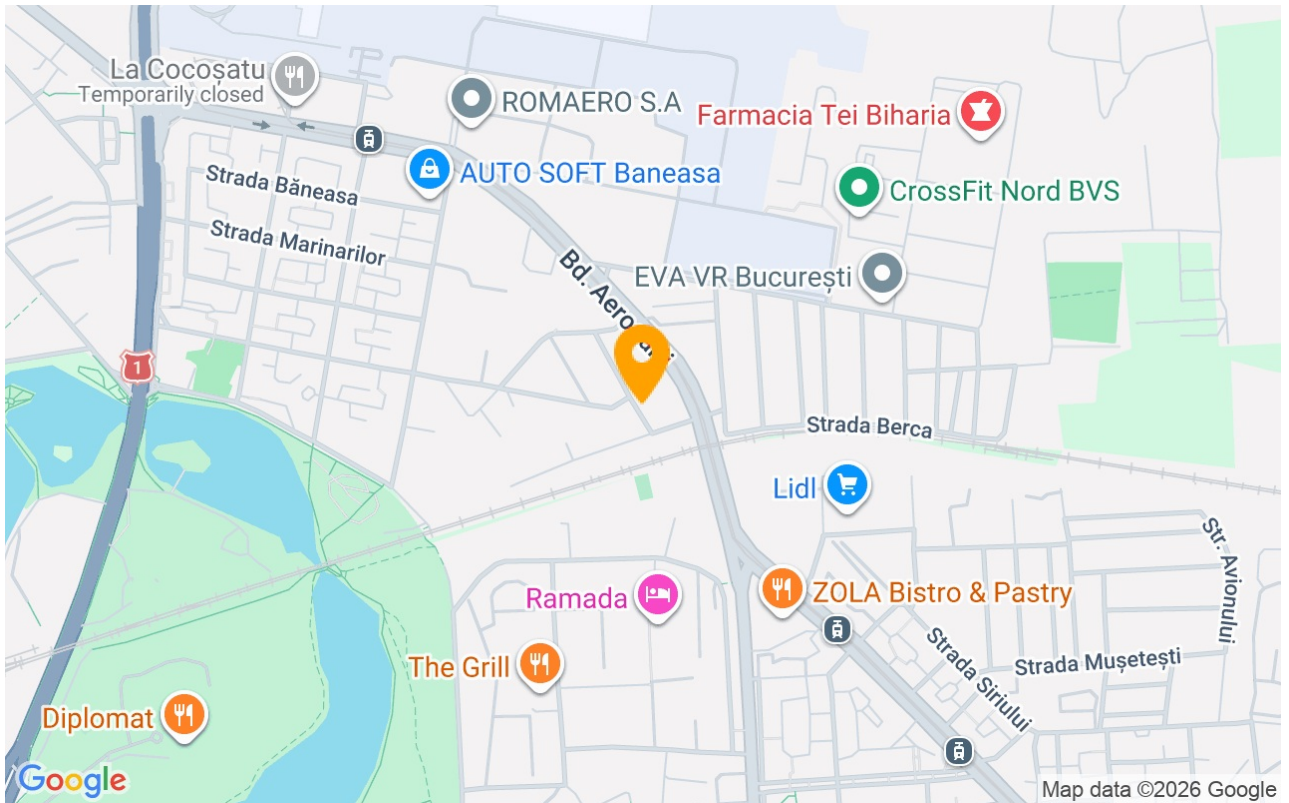
 Dishwasher

 Furnished

 Building heating

 Air conditioning

Location



Photos

