

**Violetta Tudorache**

☎ +40 729 005 624

✉ contact@blissimobiliare.ro
(mailto:contact@blissimobiliare.ro)

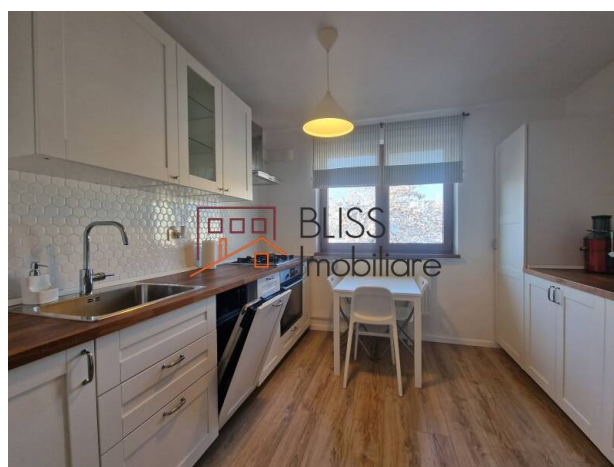
Updated on 26 June 2024

Modern 1-bedroom apartment in a premium location

📍 Parcul Floreasca, Bucharest

Web Reference

#26486



<https://blissimobiliare.ro/en/apartment-1-bedroom-for-rent-floreasca-dorobanti-bucharest-26486>
(<https://blissimobiliare.ro/en/apartment-1-bedroom-for-rent-floreasca-dorobanti-bucharest-26486>)

Description

BLISS Imobiliare presents a recently renovated 1-bedroom apartment located in an exclusive and quiet area, with easy access to everything that is important to you.

Located in a bohemian and quiet area, near Parcul Floreasca

Located on the 4th floor, with a generous area, the apartment is modern and comfortable, and has natural light thanks to the large glazed areas.

It benefits from an extremely bright living room, with an Innovation Living extendable sofa and the BoConcept library, and a semi-open kitchen, furnished with Ikea brand furniture and fully equipped with the latest generation appliances (dishwasher, no-frost refrigerator, electric oven, gas stove, hood, etc.). The apartment is also equipped with a washing machine.

The bedroom benefits from a double bed and Ikea brand wardrobe and access to the spacious balcony overlooking the green and quiet area of the Floreasca neighborhood, being an oasis of peace and relaxation where you can enjoy the time spent with your loved ones.

Renovated in 2021 and modern, with a fully equipped kitchen and bathroom, being initially lived in by the owners and then constantly rented, the apartment offers the possibility of moving in or renting immediately. The finishes are premium, it has air conditioning, quality sanitary installations, parquet

and a metal door.

The building has a height of 4 floors and benefits from a mini-park behind the block, with lots of greenery around, and a quiet street.

The Floreasca district is famous for its many restaurants and cafes with a bohemian feel, many shops and commercial spaces, and last but not least, the area is also quickly connected to the Pipera office district. The Dorobanti area and Radu Beller street are a few steps away.

This residential area has quick access to top educational institutions, as for public transport, the Aviatorilor and Stefan cel Mare metro stations are nearby.






Also, One Gallery is being built nearby, a new destination that will offer a wide variety of integrated facilities: restaurants, cafes, green spaces, children's playgrounds, premium offices, but also two levels of underground parking.

The Floreasca area is a vibrant location, famous for its green spaces and developed commercial area, being an exclusive and safe neighborhood, ideal for those looking for a premium residence in the active area of Bucharest.

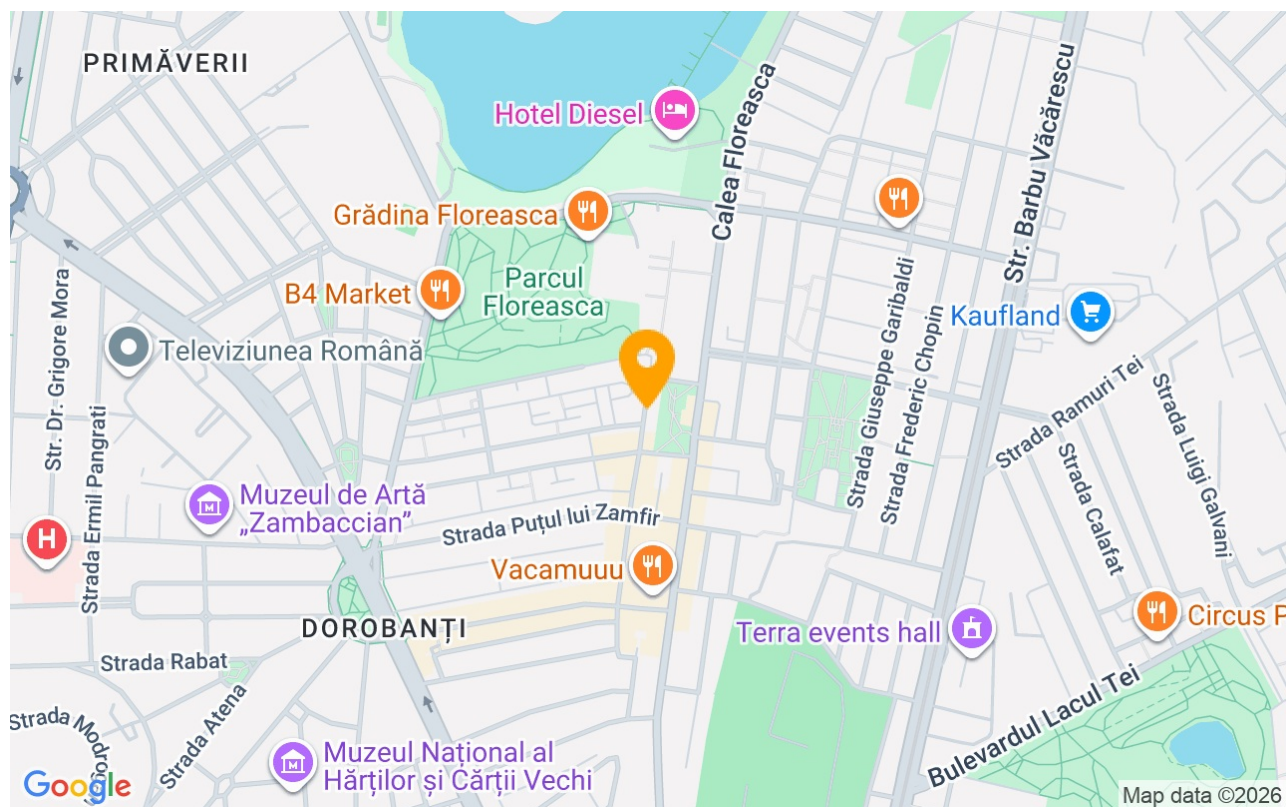
Property details

Rooms no.	2
Useable surface	48m²
Apartment type	Apartment
Type of rooms	Semi-independent
Type of comfort	Comfort 1
Bedrooms no.	1
Kitchens no.	1
Bathrooms no.	1
Building type	Block
Year built	1970
Year renovated	2014
Config	P+4
Floor	4
Balconies no.	1
State	Finished
Elevator	No
Earthquake risk class	Unclassified

Amenities

-  Equipped kitchen
-  Dishwasher
-  Semi furnished
-  City heating
-  Air conditioning

Location



Photos

