

**Violetta Tudorache**

☎ +40 729 005 624

✉ [contact@blissimobiliare.ro](mailto:contact@blissimobiliare.ro)  
(mailto:contact@blissimobiliare.ro)

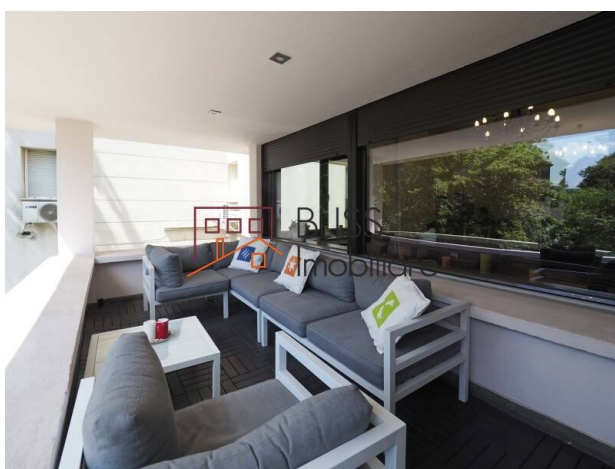
Updated on 8 March 2022

**Bohemian 3 bedroom  
apartment Primaverii Bucharest**

📍 Charles de Gaulle, Bucharest

Web Reference

#29259



<https://blissimobiliare.ro/en/apartment-3-bedrooms-for-rent-dorobanti-primaverii-kiseleff-aviatorilor-bucharest-29259> (<https://blissimobiliare.ro/en/apartment-3-bedrooms-for-rent-dorobanti-primaverii-kiseleff-aviatorilor-bucharest-29259>)

**Description**

Renovated bohemian 3 bedroom, 5 rooms, apartment in the premium Primaverii area of Bucharest.

## Just two steps away from Piata Charles de Gaulle and Herastrau park

Just two steps away from Piata Charles de Gaulle with the Aviatorilor metro and the Herastrau park this property is excellent located for people that want to live in a premium area with green areas and other facilities in the direct vicinity. Restaurants, bars, supermarkets, public transport all come together here.

Being on a side street (one way) of Bulevardul Primaverii this building is also situated away from the heavy traffic.

This apartment is situated on the second floor of a solid building from 1939. This building is also known as the Piano building.

The apartment has been renovated recently keeping the traditional aspects and mixing them with modern amenities. The kitchen is very spacious and the library room will astonish you.

Apartment located in the Primaverii - Bucharest area

Details:





- very bright facing south;
- spacious, completely renovated with quality finishes;
- spacious balcony and storage spaces (pantry / closet);
- oven, dishwasher, washing machine, 4-burner stove;
- own central heating system;
- air conditioning;
- double glazing + blinds (electric in one of the bedrooms);
- solid oak parquet, natural stone.



Property details

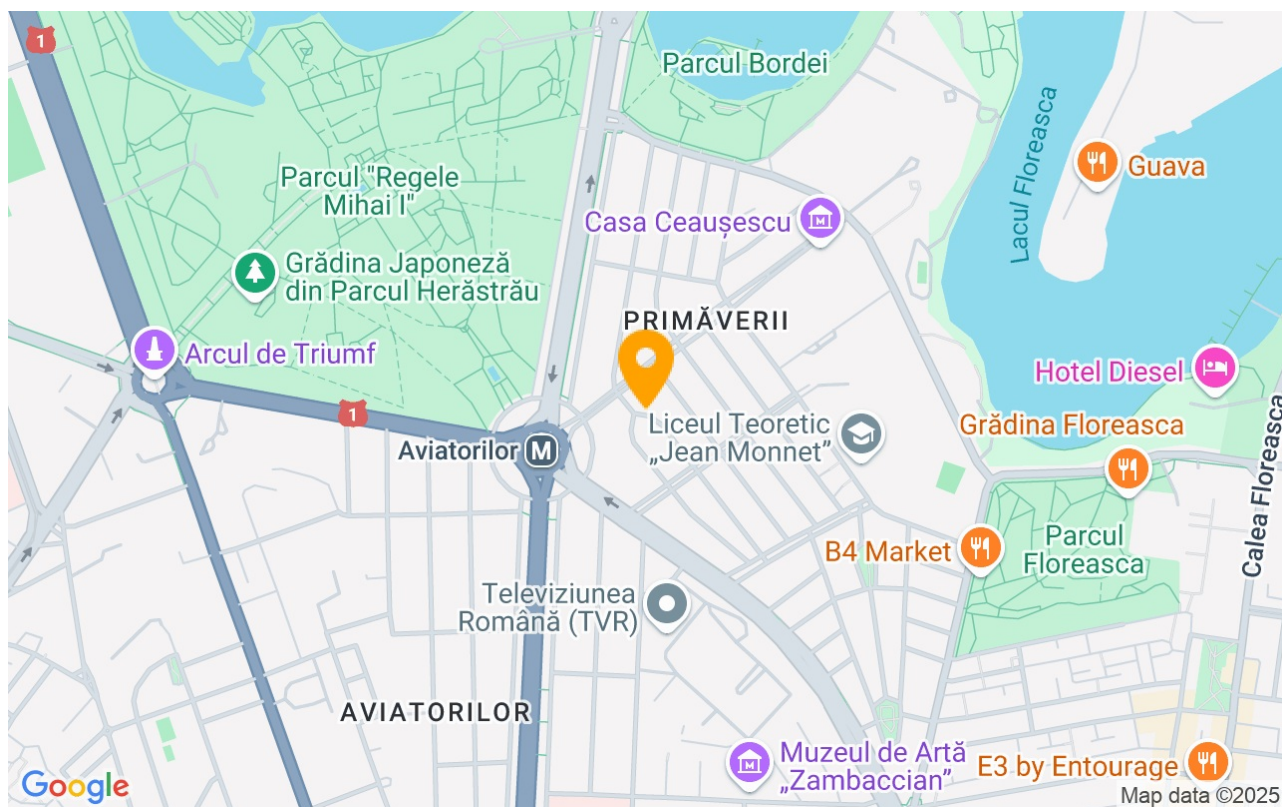
Rooms no.	5
Useable surface	160m²
Constructed surface	170m²
Apartment type	Apartment
Type of rooms	Semi-independent
Type of comfort	Deluxe
Bedrooms no.	3
Kitchens no.	1
Bathrooms no.	2
Building type	Block
Year built	1938
Config	P+3
Floor	2
Balconies no.	1
State	Finished
Elevator	No
Earthquake risk class	Unclassified

Amenities

-  Equipped kitchen
-  Dishwasher
-  Semi furnished
-  Private heating



## Location



## Photos

