

**Violetta Tudorache**

☎ +40 729 005 624

✉ contact@blissimobiliare.ro
(mailto:contact@blissimobiliare.ro)

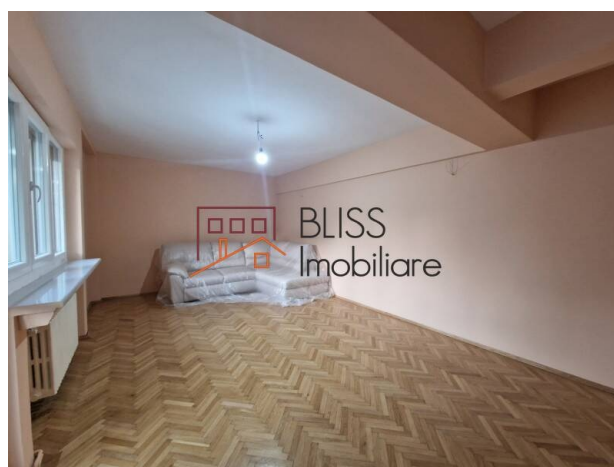
Updated on 14 December 2023

**spacious 2-bedroom apartment
of 110 sqm****1,100 EUR/ month**

Web Reference

#31433

📍 Caderea Bastiliei, Bucharest



<https://blissimobiliare.ro/en/apartment-2-bedrooms-for-rent-km-0-ultracentral-bucharest-31433>
(<https://blissimobiliare.ro/en/apartment-2-bedrooms-for-rent-km-0-ultracentral-bucharest-31433>)

Description

BLISS Imobiliare presents a 2-bedroom apartment, detached, located on the first floor of a building located in the Caderea Bastiliei - Dorobanti area, a few minutes from Piata Romana.

The apartment was completely renovated in 2023.

It has a usable area of 110 square meters and is divided into 4 unfurnished rooms, fully furnished and equipped kitchen, bathroom, service toilet and 2 balconies.

The central area where the apartment is located is very popular, with a multitude of restaurants, cafes and elegant places. Here you can find a varied range of international and local cuisines, from fine dining restaurants to famous and welcoming bistros and cafes.

A big advantage of this apartment is that it is close to several parks, such as the Dinamo Sports Park, which is 9 minutes' walk away, which is open 24/7 to the public and where you can train and enjoy the 2 swimming pools, the athletics track or the fitness room. Also, a maximum of 20 minutes' walk away is the Kiseleff Park and, on the other side, the Circus Park, parks that facilitate and encourage outdoor sports and relaxation activities, being a safe and wonderful environment for families with children.

The area is well connected to the public transport network, with many bus and tram stops, which makes access to other parts of the city of interest easy and convenient. Also, the Stefan cel Mare metro station is only a 9-minute walk away, and the Piata Romana and Piata Victoriei metro stations


are only a 10-minute walk away.

The location is suitable for a family with children due to the large number of schools and kindergartens in the area, and the easy access to higher education institutions.


Property details


Rooms no.	4
Useable surface	110m ²
Constructed surface	115m ²
Apartment type	Apartment
Type of rooms	Independent
Type of comfort	Comfort 1
Bedrooms no.	2
Kitchens no.	1
Bathrooms no.	1
Toilets no.	1
Building type	Block
Year built	1970
Config	P+4
Floor	1
Balconies no.	2
State	Finished
Elevator	No
Earthquake risk class	Unclassified
Common service charges	30.00 EUR


Amenities

 Equipped kitchen

 Dishwasher

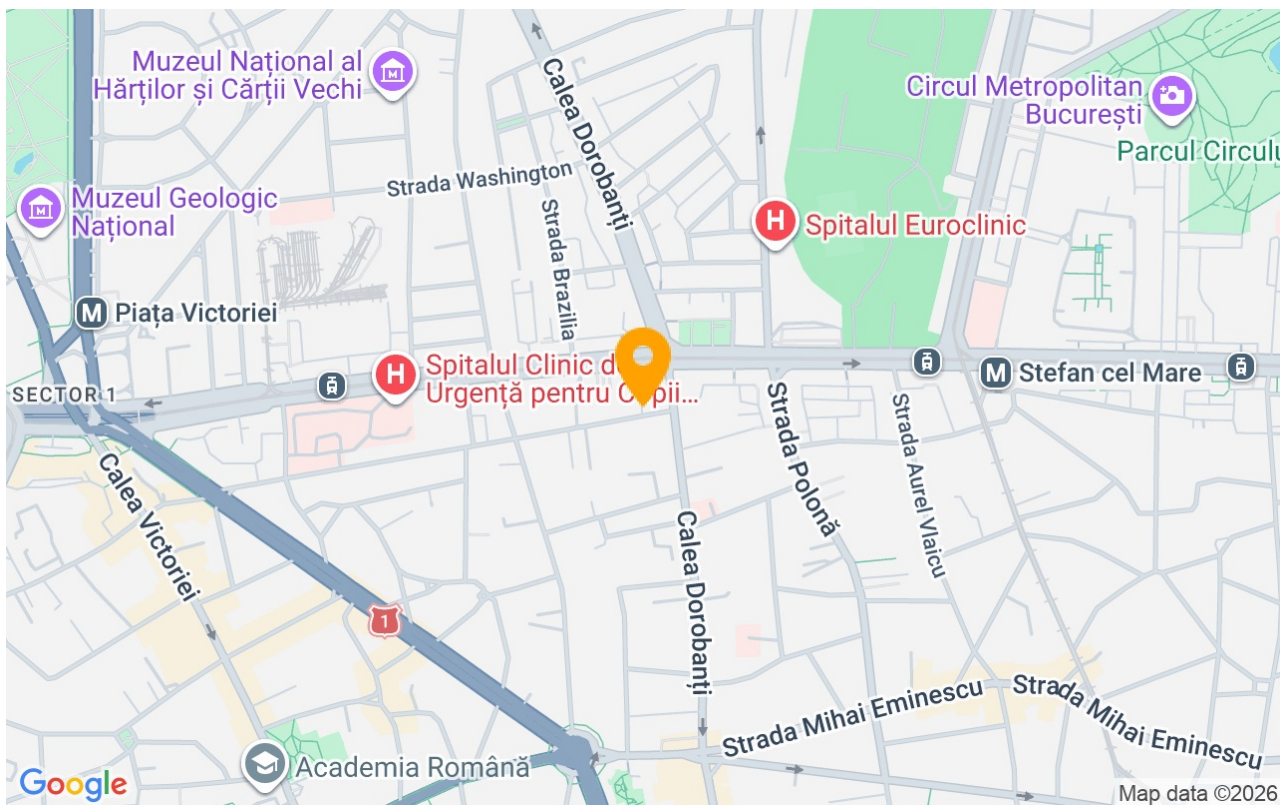
 Not furnished

 Private heating

 Suitable for office

 Air conditioning

Location



Photos

