



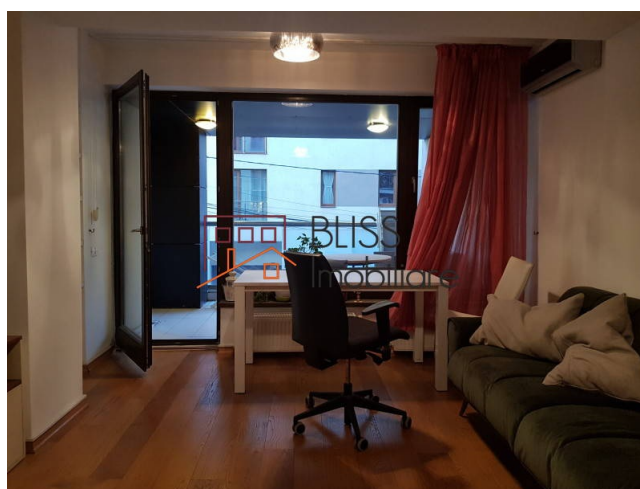
Updated on 18 Aprilie 2022

## 1 bedroom apartment with 17mp terrace next to Herastrau Park

 Aviatiei Nord, Bucharest

Web Reference

**#32467**



<https://blissimobiliare.ro/en/apartment-1-bedroom-for-rent-aviatiei-promenada-mall-metro-pipera-bucharest-32467>

### Description

1 bedroom apartment, in a new building, in Baneasa neighbourhood.

## Cozy 1 bedroom apartment in a quiet, low traffic area in Baneasa

The apartment is located on the 1st floor, with an usable area of 60 sqm and a generous terrace of 17 sqm. Fully furnished (Mobexpert furniture) and equipped, the apartment has immediate availability to be inhabited.

The interior compartmentation offers storage areas, living room and kitchen with access to the terrace, 1 bathroom, 1 master bedroom with dressing room.

The apartment is located between Baneasa and Aviatiei, in a quiet area, close to Herastrau park.

It benefits from quick access to: public transport, educational institutions and to numerous parks and relaxation areas.

Property details	
Rooms no.	2
Useable surface	60m²
Constructed surface	81m²
Apartment type	Apartment
Type of rooms	Independent
Type of comfort	Comfort 1
Bedrooms no.	1
Kitchens no.	1
Bathrooms no.	1
Building type	Block
Year built	2009
Config	1S+P+7
Floor	1
Balconies no.	1
State	Finished
Elevator	Yes
Average cost of utilities per month	50.00 EUR

## Amenities



Equipped kitchen



Furnished ( Willing to take out )



Building heating



Air conditioning

Location



Photos

