



**Violetta Tudorache**

+40 729 005 624

contact@blissimobiliare.ro  
(mailto:contact@blissimobiliare.ro)

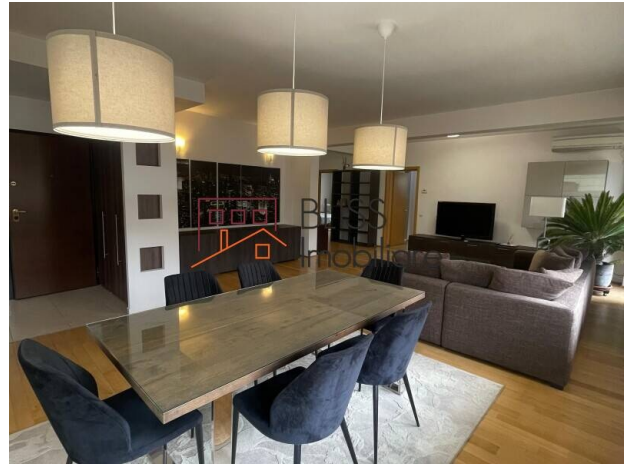
Updated on 22 April 2026

## Luxurious and spacious 3 bedroom Apartment in Herastrau area

Herastrau, Bucharest

**2,800 EUR/ month**

Web Reference  
**#35558**



<https://blissimobiliare.ro/en/apartment-3-bedrooms-for-rent-herastrau-nordului-bucharest-35558>  
(<https://blissimobiliare.ro/en/apartment-3-bedrooms-for-rent-herastrau-nordului-bucharest-35558>)

### Description

**Spacious 3-Bedroom Apartment in Herăstrău - 180 sqm Usable, 2 Parking Spaces, Elevator, Fully Furnished & Equipped**

## Near Herastrau park and Aurel Vlaicu metro station

We are pleased to present a luxurious 3-bedroom apartment, located in one of Bucharest's most exclusive residential areas, just moments from Herăstrău Park. The property is situated on the 3rd (top) floor of a P+3 building completed in 2005, featuring an elevator, generous spaces, abundant natural light, and a refined lifestyle close to the park.

With a usable area of 180 sqm, the apartment is ideal for families or residents looking for true comfort, large rooms, and a practical layout.

### Layout & Features

Spacious living room with a lounge area and dedicated dining space;

- 3 well-proportioned bedrooms;
- Separate fully fitted and equipped kitchen, including a dishwasher;
- 2 bathrooms;

- 1 balcony.

### **Comfort & Benefits**

- Individual heating system and air conditioning, for year-round comfort;
- 2 outdoor parking spaces available;
- The apartment is delivered fully furnished and modernly equipped.

### **Prime Location - Herăstrău / Nordului**

The apartment is positioned in one of Bucharest's most desirable residential areas, right next to Herăstrău Park. The location offers a complete lifestyle: outdoor activities in the park, premium restaurants and cafés, and quick access to key points of interest in the area.

Nearby you will find:

- Herăstrău Park and its promenade;
- Premium restaurants and terraces in the Nordului / Herăstrău area;
- Promenada Mall and the main office hubs (Pipera-Floreasca);
- Fast connections to Aurel Vlaicu metro station, DN1 and the airport.



## Property details

<b>Rooms no.</b>	4
<b>Useable surface</b>	180m <sup>2</sup>
<b>Constructed surface</b>	200m <sup>2</sup>
<b>Apartment type</b>	Apartment
<b>Type of rooms</b>	Semi-independent
<b>Type of comfort</b>	Comfort 1
<b>Bedrooms no.</b>	3
<b>Kitchens no.</b>	1
<b>Bathrooms no.</b>	2
<b>Building type</b>	Block
<b>Year built</b>	2005
<b>Config</b>	P+3
<b>Floor</b>	3
<b>Balconies no.</b>	1
<b>State</b>	Finished
<b>Elevator</b>	Yes
<b>Parking outside</b>	2
<b>Earthquake risk class</b>	Unclassified

## Amenities

 Equipped kitchen

 Dishwasher

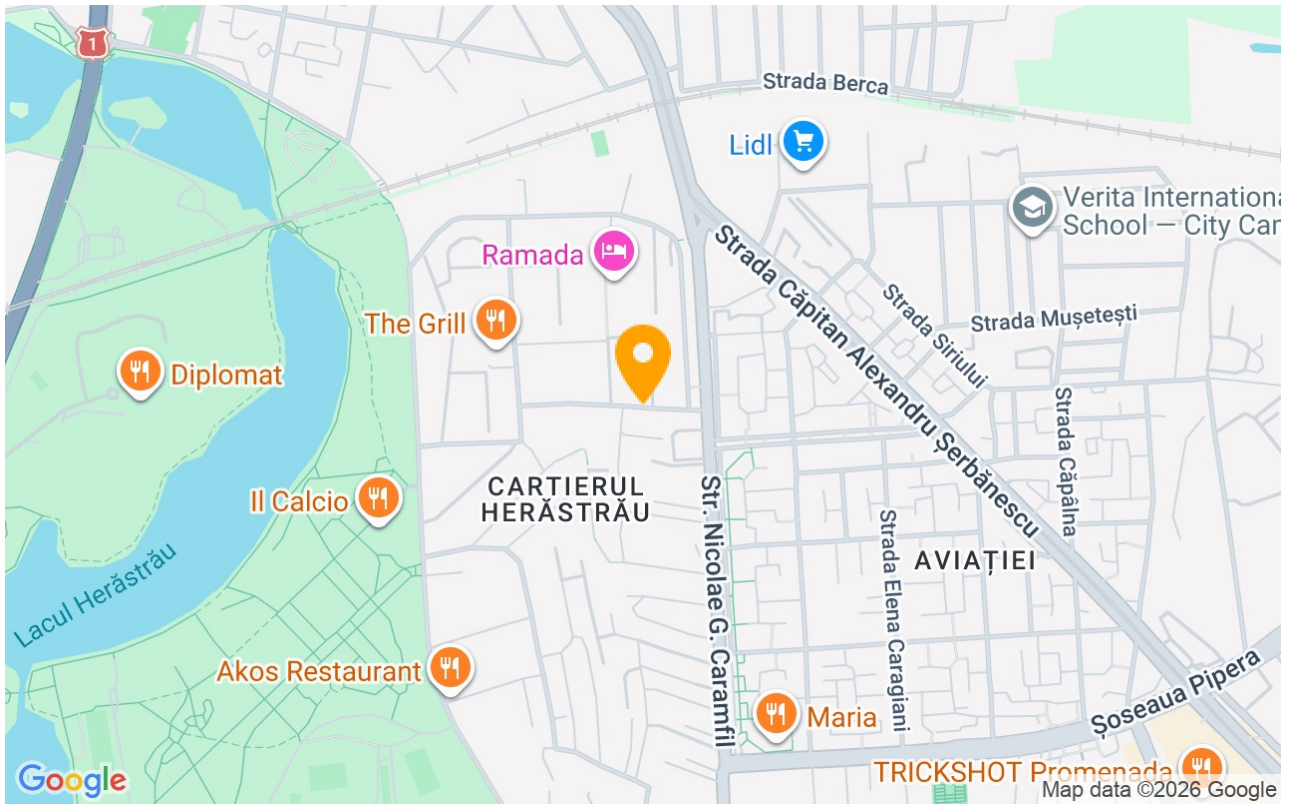
 Furnished

 Private heating

 Air conditioning



## Location



## Photos

