

**Violetta Tudorache**

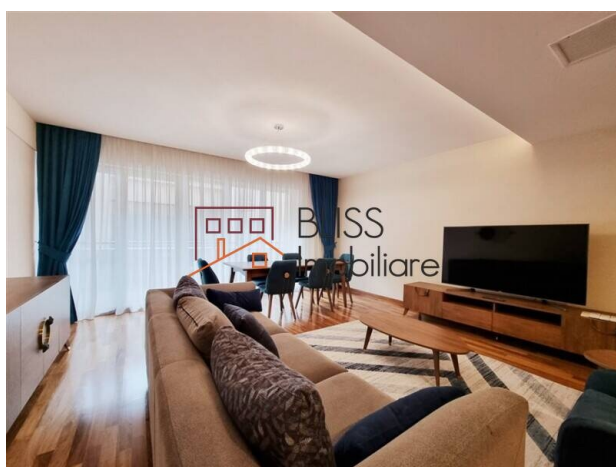
☎ +40 729 005 624

✉ contact@blissimobiliare.ro
(mailto:contact@blissimobiliare.ro)

Updated on 27 November 2025

Premium 3-Bedroom Apartment in Herăstrău

📍 Nordului, Bucharest

2,250 EUR/ monthWeb Reference
#37258

<https://blissimobiliare.ro/en/apartment-3-bedrooms-for-rent-herastrau-nordului-bucharest-37258>
(<https://blissimobiliare.ro/en/apartment-3-bedrooms-for-rent-herastrau-nordului-bucharest-37258>)

Description

Premium 3-Bedroom Apartment in Nordului - Herăstrău Area, 146 sqm, 2 Underground Parking Spaces & Storage Unit

Exclusive secured building near Herăstrău Park and premium amenities

We are pleased to present this elegant and exceptionally spacious 3-bedroom apartment, located on the 4th floor of a premium low-rise building in the prestigious Nordului - Herăstrău district, one of the most desirable residential areas in northern Bucharest, just a short walk from Herăstrău Park.

The property offers a total area of 173 sqm, including 146 sqm usable area, complemented by two terraces of 19 sqm and 8 sqm, providing generous outdoor space, excellent natural light and a refined living environment. The apartment is fully furnished and equipped with high-quality finishes.

Layout & Interior Features

- Entrance hall with dressing area
- Large and bright living room with dining area and access to the 19 sqm terrace
- Fully equipped closed kitchen with modern appliances and access to the terrace
- Three spacious bedrooms, including a master bedroom with private loggia (8 sqm)
- Two bathrooms - one with Jacuzzi bathtub, the other with walk-in shower

- Two furnished terraces, ideal for outdoor relaxation
- Extensive built-in storage spaces

Facilities & Advantages

- 2 underground parking spaces included
- Dedicated storage unit
- Air-conditioning system with individual thermostats
- Internet and cable TV installed
- Secured building with 24/7 security, controlled access & video intercom

Prime Location - Nordului / Herăstrău

Located in one of Bucharest's most exclusive green residential areas, offering fast access to:






- Herăstrău Park
- Promenada Mall
- Pipera - Aviației business hub
- Fine-dining restaurants and premium cafés

A perfect choice for families, expats and professionals seeking generous space, comfort and prestige in a top residential location.

Property details

Rooms no.	4
Useable surface	146m ²
Constructed surface	173m ²
Apartment type	Apartment
Type of rooms	Independent
Type of comfort	Comfort 1
Bedrooms no.	3
Kitchens no.	1
Bathrooms no.	2
Building type	Block
Year built	2009
Config	1S+P+6
Floor	4
Balconies no.	1
State	Finished
Elevator	Yes
Parking inside	2
Storage no.	1
Earthquake risk class	Unclassified

Amenities

-  Equipped kitchen
-  Dishwasher
-  Furnished
-  Building heating
-  Air conditioning

Location



Photos

