



Updated on 26 Aprilie 2024

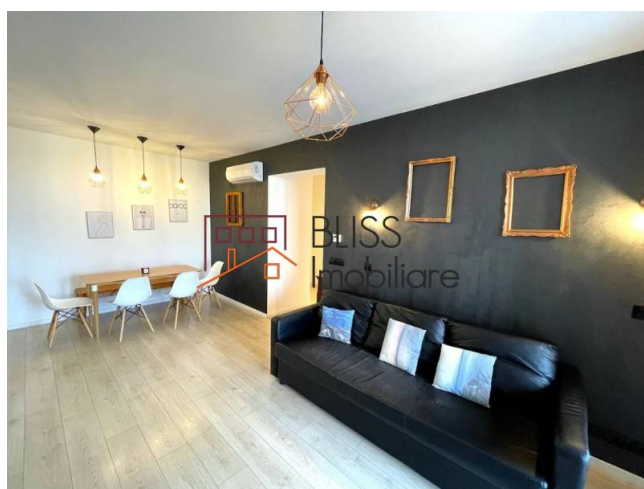
## Luxury 1-Bedroom Apartment in City Point complex Aviatiei

700 EUR / month

Web Reference

#40211

📍 City Point, Aviatiei Manastirea Cristiana, Bucharest



<https://blissimobiliare.ro/en/apartment-1-bedroom-for-rent-aviatiei-promenada-mall-metro-pipera-bucharest-40211>

### Description

BLISS Imobiliare presents you a one-bedroom apartment located in the northern part of the city, in the Pipera - Floreasca area, in the premium residential complex City Point, only 10 minutes walk from Promenada Mall and Aurel Vlaicu subway station.

## Located near Aurel Vlaicu Metrou and Promenada Mall, in Aviatiei area

The apartment consists of 2 rooms, with a smart layout: spacious living-room with dining area for 6 people, a fully equipped kitchen (dishwasher included), a bedroom and a bathroom with shower.

The property also has a terrace balcony with an area of 15.64 sqm. The total a usable area is 51.51 sqm. The apartment is located on the 4th floor of Gf + 9F the building completed in 2016.

Fully furnished and equipped in modern-industrial style, by a young team of talented designers, this apartment is the ideal property that you can call "home". The stylish high-end Italian designed furniture attributes to a very fine and functional living.

Moreover, the apartment also benefits from an underground parking space. Among the facilities are: apartment central heating and air conditioning units, which ensure thermal comfort.

Positioned on the South-East side of the building, the residence has natural light throughout the day. The modern

and trendy designed and the premium location make this property the ideal home.

In the immediate vicinity of the building are the office area Iride Park, Sky & Nusco Towers, Floreasca City, Promenada Mall (10 minutes walk), along with many green spaces for relaxation and recreation (Herastru, Bordei, Floreasca Parks, etc.), where you can enjoy fresh air and spend quality time with loved ones.

Nearby is the Floreasca area, which is a vibrant location, famous for its green spaces and developed shopping area, with numerous restaurants and cafes with a bohemian and cozy feeling.

Also, the distance from the Old Town of Bucharest is 15 minutes by car, the nearest metro station being Aurel Vlaicu (10 minutes on foot), with the M2 line.

Property details	
Rooms no.	2
Useable surface	52m²
Constructed surface	67m²
Apartment type	Apartment
Type of rooms	Semi-independent
Type of comfort	Comfort 1
Bedrooms no.	1
Kitchens no.	1
Bathrooms no.	1
Building type	Block
Year built	2017
Config	1S+P+8
Floor	4
Balconies no.	1
State	Finished
Elevator	Yes
Parking outside	1
Earthquake risk class	Unclassified

## Amenities



Equipped kitchen



Dishwasher



Furnished



Private heating



Air conditioning

Location



Photos

