

**Violetta Tudorache**

☎ +40 729 005 624

✉ [contact@blissimobiliare.ro](mailto:contact@blissimobiliare.ro)  
(mailto:contact@blissimobiliare.ro)

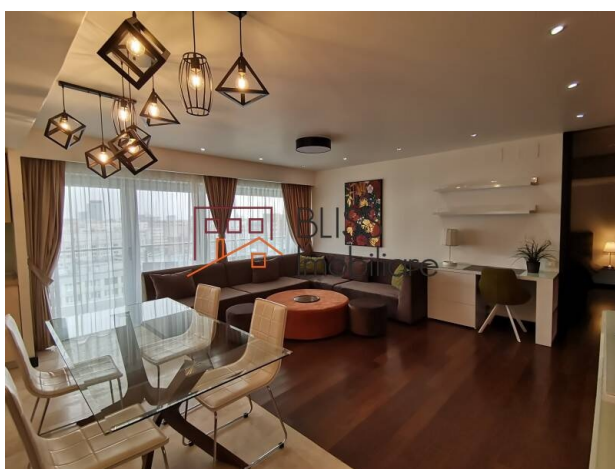
Updated on 20 May 2024

## Modern 2-bedroom Apartment near Herastrau Park

Web Reference

#40942

📍 Alia Apartments, Arcul de Triumf, Bucharest



<https://blissimobiliare.ro/en/apartment-2-bedrooms-for-rent-dorobanti-primaverii-kiseleff-aviatorilor-bucharest-40942> (<https://blissimobiliare.ro/en/apartment-2-bedrooms-for-rent-dorobanti-primaverii-kiseleff-aviatorilor-bucharest-40942>)

### Description

Modern 2-bedroom apartment, located in the exclusive residential area, near the Arcul de Triumf and Herastrau Park, in a building with outstanding architecture, completed in 2010.

## Located in gated residential complex with pool, near Herastrau Park

The apartment is bright and spacious, with a usable area of 79 square meters, featuring: an open-space living room with big windows, 2 bedrooms, kitchen, 2 bathrooms and 2 spacious balconies.

The apartment is modernly furnished and equipped, benefiting from: high quality finishes, superb view, underground parking spaces included.

The Alia Residence residential complex benefits from:

- fitness room, sauna, jacuzzi;
- playground for children, landscaped green areas;
- three swimming pools;
- security 24/7.

Located in the heart of Bucharest, near the historical Kiseleff Avenue, a few minutes away from the Arcul de Triumf and Herastrau park, the project perfectly combines the advantages of a modern residence with the mobility needed by providing a very good access to all areas of the city.

Nearby you can find many leisure places: parks, museums, restaurant and many entertainment areas. The area is safe and is ideal for a family with children.





Last but not least, the Herastrau area benefits from easy access to important arteries that cross the city such as Calea Floreasca, Aviatorilor Boulevard, Kiseleff Avenue, public transport and especially Aviatorilor metro station, with the M2 line.



Property details

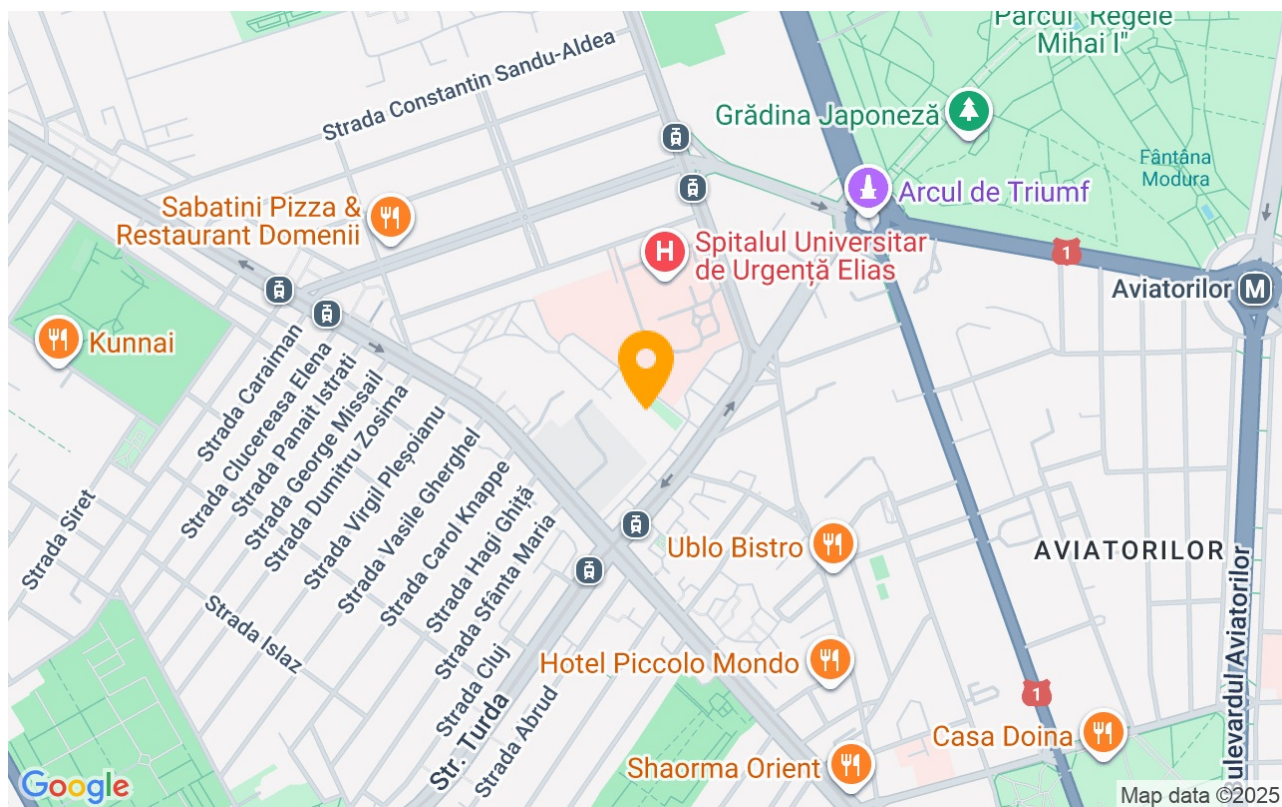
Rooms no.	3
Useable surface	79m²
Constructed surface	98m²
Apartment type	Apartment
Type of rooms	Independent
Type of comfort	Comfort 1
Bedrooms no.	2
Kitchens no.	1
Bathrooms no.	2
Building type	Block
Year built	2010
Config	2S+P+20
Floor	11
Balconies no.	2
State	Finished
Elevator	Yes
Parking inside	3
Earthquake risk class	Unclassified
Common service charges	150.00 EUR

Amenities

-  Equipped kitchen
-  Furnished
-  Building heating
-  Swimming pool



## Location



## Photos

