

**Violetta Tudorache**

☎ +40 729 005 624

✉ contact@blissimobiliare.ro

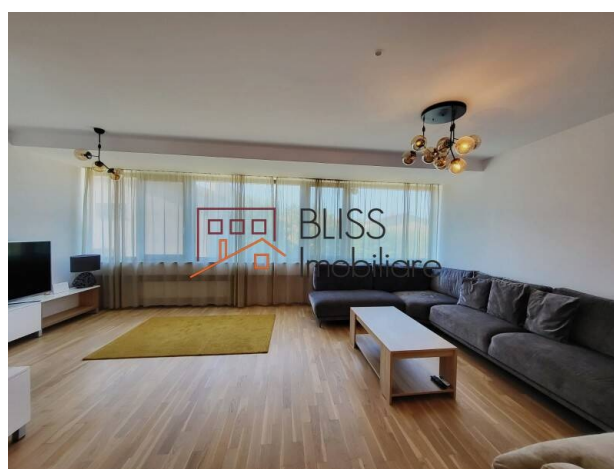
(mailto:contact@blissimobiliare.ro)

Updated on 22 July 2025

3-bedroom duplex apartment with 2 parking spaces

Web Reference

#41701

📍 Iancu Nicolae British School Bucharest,
Bucharest / Ilfov

<https://blissimobiliare.ro/en/apartment-duplex-3-bedrooms-for-rent-iancu-nicolae-pipera-bucharest-ilfov-41701> (<https://blissimobiliare.ro/en/apartment-duplex-3-bedrooms-for-rent-iancu-nicolae-pipera-bucharest-ilfov-41701>)

Description

BLISS Imobiliare presents a superb 3-bedroom duplex in a boutique building located near the intersection of Iancu Nicolae and Pipera Boulevard between the American International School in Bucharest and the British School in Bucharest, both of which are within walking distance.

The apartment is fully furnished and equipped with high quality products.

It has a built area of 220 sqm and is divided on 2 levels with a large living room, fully equipped kitchen, three bedrooms, 2 bathrooms and a guest toilet, and a large 40 sqm terrace with an open view.

The apartment benefits from two parking spaces.

The area where the apartment is located is very sought after, due to the accessibility to public transport, premium educational and medical systems and other facilities that make this area the right choice for a family that wants a comfortable and quiet lifestyle, in an exclusive area, connected to everything that matters for growth and development.

One of the reasons why the Pipera area is among the most desirable is the variety of elite international schools and kindergartens, such as AISB - Scoala Americana, Olga Gudynn International School, which is 3-5 minutes away by car and approximately 25 minutes by foot on foot, the British School, which can be reached in 5 minutes by car and 14 minutes on foot, or Cambridge School of Bucharest and Mark Twain International School, which can be reached in 5-6 minutes by car and approximately 30 minutes on foot . There are also many kindergartens in the area, the closest one being the Hermann Oberth German Kindergarten, a 1-minute walk away.







The Pipera area offers everything you need for a modern and comfortable lifestyle, with a variety of restaurants, gyms, stores such as Mega Image or Lidl, shopping centers such as Jollie Ville, Pipera Plaza, but also quick access to other shopping centers large ones such as Baneasa Shopping City, which is 13 minutes away by car.

Therefore, this property is ideal for a family that wants a comfortable and quiet lifestyle, in an exclusive area, connected to everything that matters for growth and development.

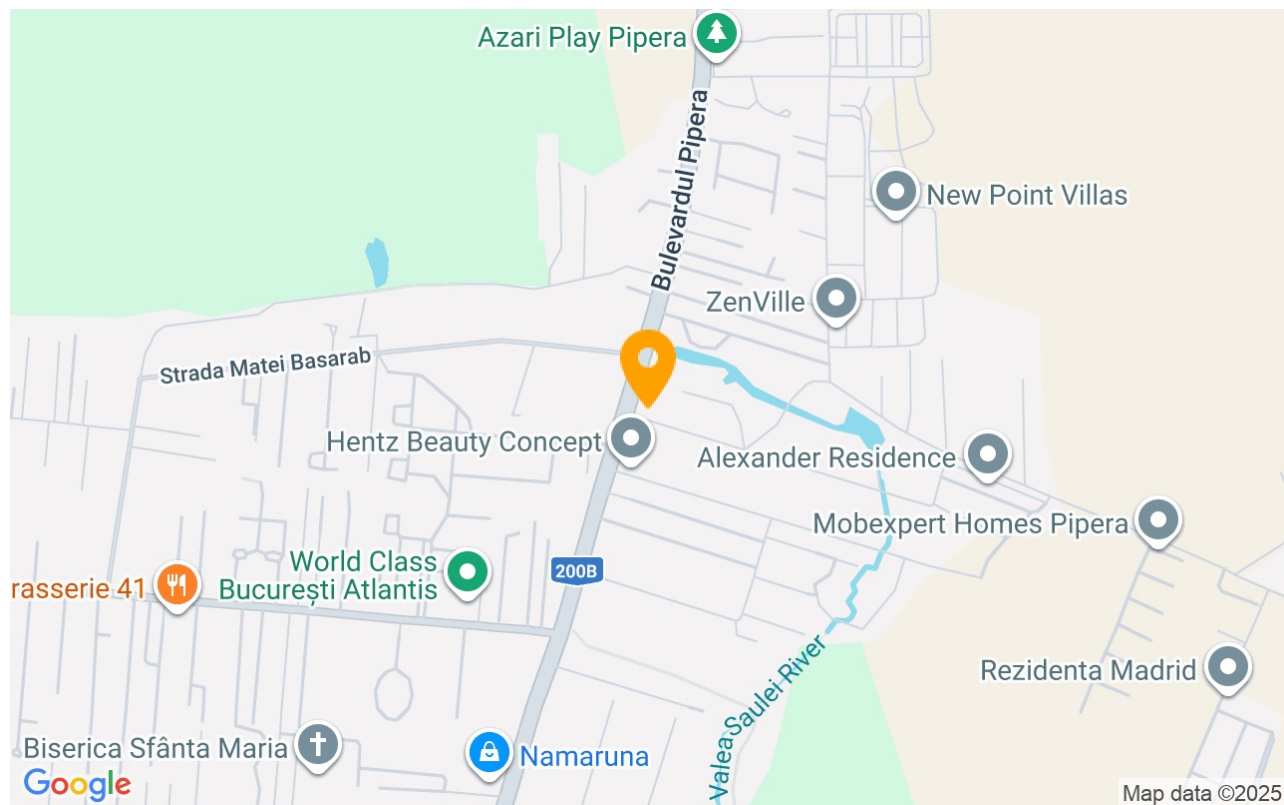
Property details

Rooms no.	5
Useable surface	180m²
Constructed surface	220m²
Apartment type	Duplex apartment
Type of rooms	Independent
Type of comfort	Comfort 1
Bedrooms no.	3
Kitchens no.	1
Bathrooms no.	2
Toilets no.	1
Building type	Villa
Year built	2017
Config	P+2
Floor	1
Balconies no.	1
State	Finished
Parking outside	2
Common service charges	150.00 EUR

Amenities

-  Equipped kitchen
-  Dishwasher
-  Furnished
-  Building heating
-  Suitable for office
-  Air conditioning

Location



Photos

