



**Violetta Tudorache**

+40 729 005 624

[contact@blissimobiliare.ro](mailto:contact@blissimobiliare.ro)  
(<mailto:contact@blissimobiliare.ro>)

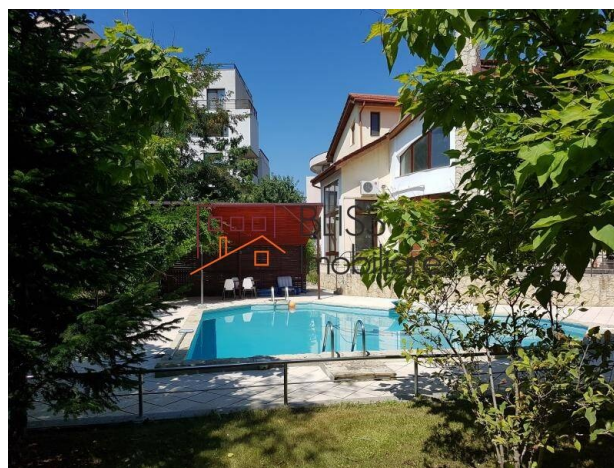
Updated on 23 April 2024

## 6-bedroom villa with private pool and private yard of 2100 sqm

**2,000,000 EUR**

Web Reference  
**#43725**

📍 Pipera, Bucharest / Ilfov



<https://blissimobiliare.ro/en/villa-6-bedrooms-for-sale-iancu-nicolae-pipera-bucharest-ilfov-43725>  
(<https://blissimobiliare.ro/en/villa-6-bedrooms-for-sale-iancu-nicolae-pipera-bucharest-ilfov-43725>)

### Description

BLISS Imobiliare is proud to present a spacious 11-room villa in Pipera, near Baneasa Forest. This impressive property features a total built area of 750 sqm, with 700 sqm of intelligently designed living space across multiple levels.

## It is offered semi-furnished, with a furnished and fully equipped kitchen.

At the basement level, you'll find a maid's room with a bathroom, two additional rooms, a fully equipped laundry room, a pantry, and a boiler room.

The ground floor boasts an open space area comprising a living room, dining area, and audio-video space, along with a study/library, bathroom, fully equipped kitchen, dressing room, entrance hall, and staircase.

Upstairs, there are four spacious bedrooms ranging from 20 to 26 sqm, a master bathroom with a jacuzzi, another bathroom with a sauna-equipped shower cabin, and a hallway.

The attic level offers a generous open space area and a bathroom with a jacuzzi.

Situated on a 2500 sqm plot of land, the villa features a large 2100 sqm garden landscaped with various trees, shrubs, fruit trees, and flowers. There are approximately 400 sqm of terraces and balconies, perfect for outdoor relaxation.

The property also includes a spectacular 120 cubic meter swimming pool, ideal for cooling off on hot summer days and creating unforgettable memories with family and friends.

Outside, there are 5 parking spaces within the courtyard, while an additional 2 parking spaces are available in a spacious garage with ample storage space.

The sought-after Pipera area offers easy access to public transportation, premium educational and medical facilities, and other amenities, making it ideal for families seeking a comfortable and peaceful lifestyle in an exclusive neighborhood.

One of the main attractions of Pipera is its proximity to elite international schools and kindergartens, including AISB - the American International School, Mark Twain International School, British School, Olga Gudynn International School, Cambridge School of Bucharest, all within a 10-minute drive.

Pipera also provides everything you need for a modern and comfortable lifestyle, with a variety of restaurants, sports facilities, and supermarkets like Mega Image and Lidl, as well as shopping centers such as Jollie Ville and Pipera Plaza, all within 7-13 minutes away. Additionally, larger shopping malls like Promenada Mall and Baneasa Shopping City are easily accessible within 15-20 minutes.



## Property details

Rooms no.	11
Useable surface	700m <sup>2</sup>
Constructed surface	750m <sup>2</sup>
Bedrooms no.	6
Kitchens no.	1
Bathrooms no.	5
Building type	Villa
Year built	2003
Balconies no.	2
State	Finished
Total land	2500m <sup>2</sup>
Print	350m <sup>2</sup>
Courtyard	2100m <sup>2</sup>
Parking inside	2
Parking outside	5
Earthquake risk class	Unclassified
Common service charges	500.00 EUR

## Amenities



Equipped kitchen



Dishwasher



Semi furnished ( Willing to take out )



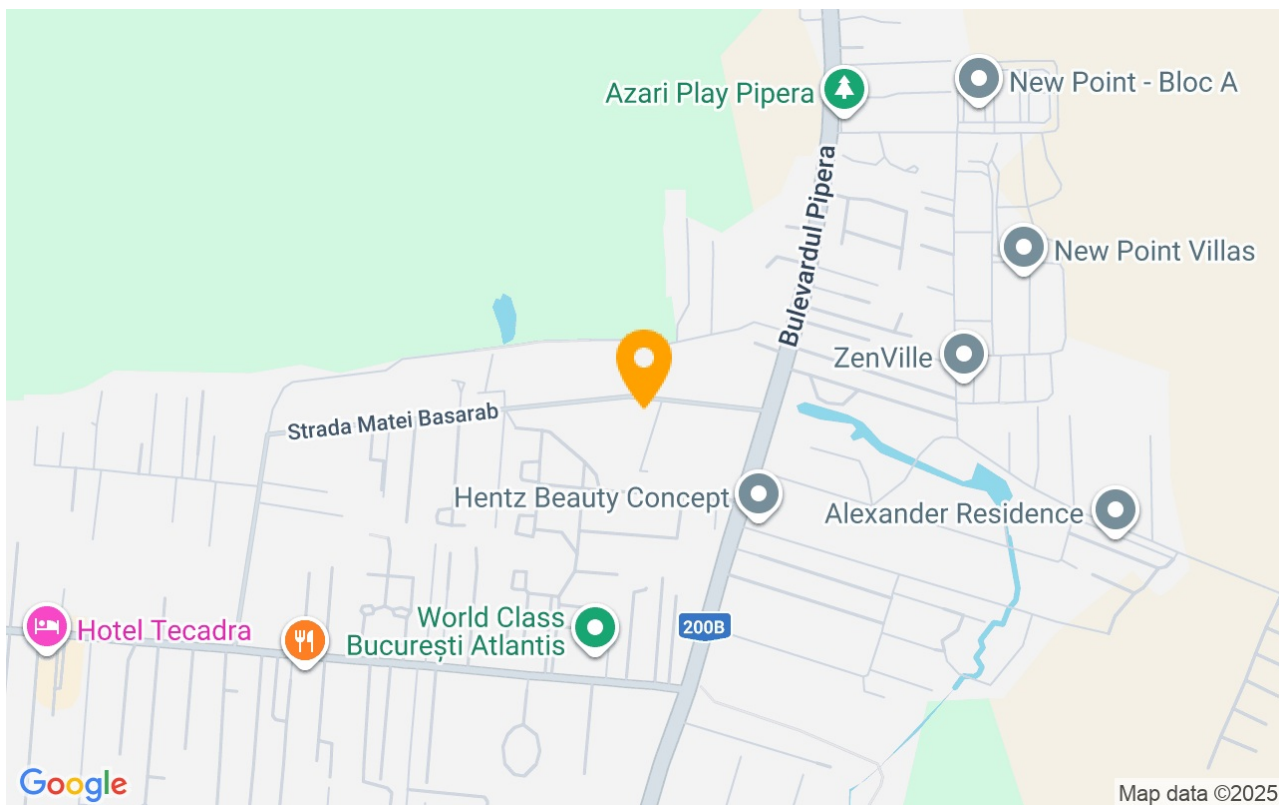
Private heating



Air conditioning



## Location



## Photos

