

**Violetta Tudorache**

☎ +40 729 005 624

✉ contact@blissimobiliare.ro
(mailto:contact@blissimobiliare.ro)

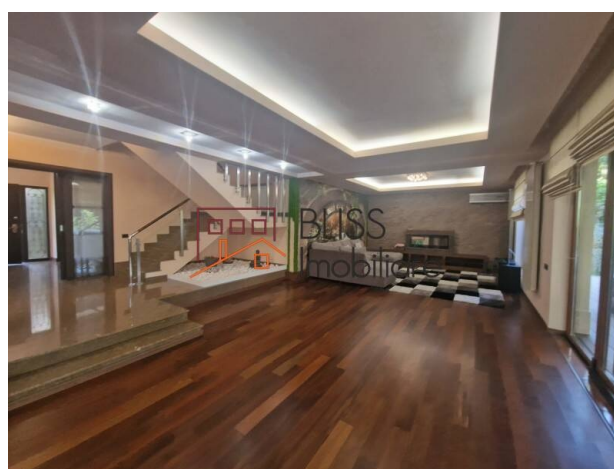
Updated on 20 November 2024

6-bedroom villa with 800 sqm garden and private pool

Web Reference

#44874

📍 Baneasa Residential Park (Butterfly), Iancu Nicolae British School Bucharest, Bucharest / Ilfov



<https://blissimobiliare.ro/en/villa-6-bedrooms-for-rent-iancu-nicolae-pipera-bucharest-ilfov-44874>
(<https://blissimobiliare.ro/en/villa-6-bedrooms-for-rent-iancu-nicolae-pipera-bucharest-ilfov-44874>)

Description

BLISS Imobiliare presents a special 6-bedroom individual villa, located in one of the most popular residential complexes in Baneasa Pipera, Baneasa Residential Park.

The villa is modernly furnished and equipped with high quality products.

The villa was built on a plot of 1000 square meters and has a constructed area of 600 square meters. It has a usable area of 450 sqm and is intelligently compartmentalized, so that the entire space is optimized to meet the needs of all family members.

The ground floor consists of a generous living room of 76 square meters, which also includes a dining area, a closed kitchen equipped with high-quality appliances, a technical room, a double garage, a bathroom and a laundry room.

On the 1st floor there is the master bedroom, absolutely gorgeous, which is equipped with a bathroom and a dressing room. There is also a guest bedroom with a bathroom and a dressing room and 2 other bedrooms that share a secondary bathroom and a dressing room.

The attic is composed of the living area, a hobby room, a bathroom and 2 other rooms with multiple functionalities.

Baneasa Residential Park in Pipera is a premium residential complex, which offers an airy space, with wide and generous streets. The residential complex is based on the "Gated Community" concept, with facilities such as 24/7 video surveillance and security, playgrounds, green spaces, sports fields, parking spaces for visitors and administrative services for the entire community. There are two access roads, one from Str. Iancu Nicolae and one in Bld. Pipera, both points being monitored 24/24, with human security.

The location itself is a lifestyle upgrade, a very quick access to the most important points of interest in everyday life - shopping centers, office buildings, hospitals and private clinics, airport, public transport, schools and private kindergartens, gyms sports, recreation clubs, golf, skating rink, horse riding and other cultural centers and public institutions.

This property is suitable for a family with children attending either the American School or the British School, as both are within a few minutes' walking distance of the complex. Other renowned schools located in the area are Cambridge School of Bucharest, Mark Twain International School or Olga Gudynn International School, which are only a few minutes away by car. Also, the area offers a variety of kindergartens perfect for the harmonious development of the little ones.

The exceptional positioning of the villa offers quick access to a variety of facilities and services of superior quality. For example, just 4 minutes away by car, you will find the Jollie Ville shopping center. Baneasa Shopping City, with the most exclusive shops and fine restaurants, is only 11 minutes away, and Promenada Mall 16 minutes away, thus offering a varied range of shops, entertainment and restaurants.


The complex is located close to Padurea Baneasa, 200 m away on foot, so it is the perfect residence for those who want to be and spend more of their free time in nature.


Property details

Rooms no.	9
Useable surface	450m²
Constructed surface	600m²
Bedrooms no.	6
Kitchens no.	2
Bathrooms no.	5
Building type	Villa
Year built	2010
Balconies no.	1
State	Finished
Total land	1000m²
Courtyard	800m²
Parking inside	2
Parking outside	2
Earthquake risk class	Unclassified
Common service charges	300.00 EUR

Amenities

 Equipped kitchen


 Dishwasher

 Furnished

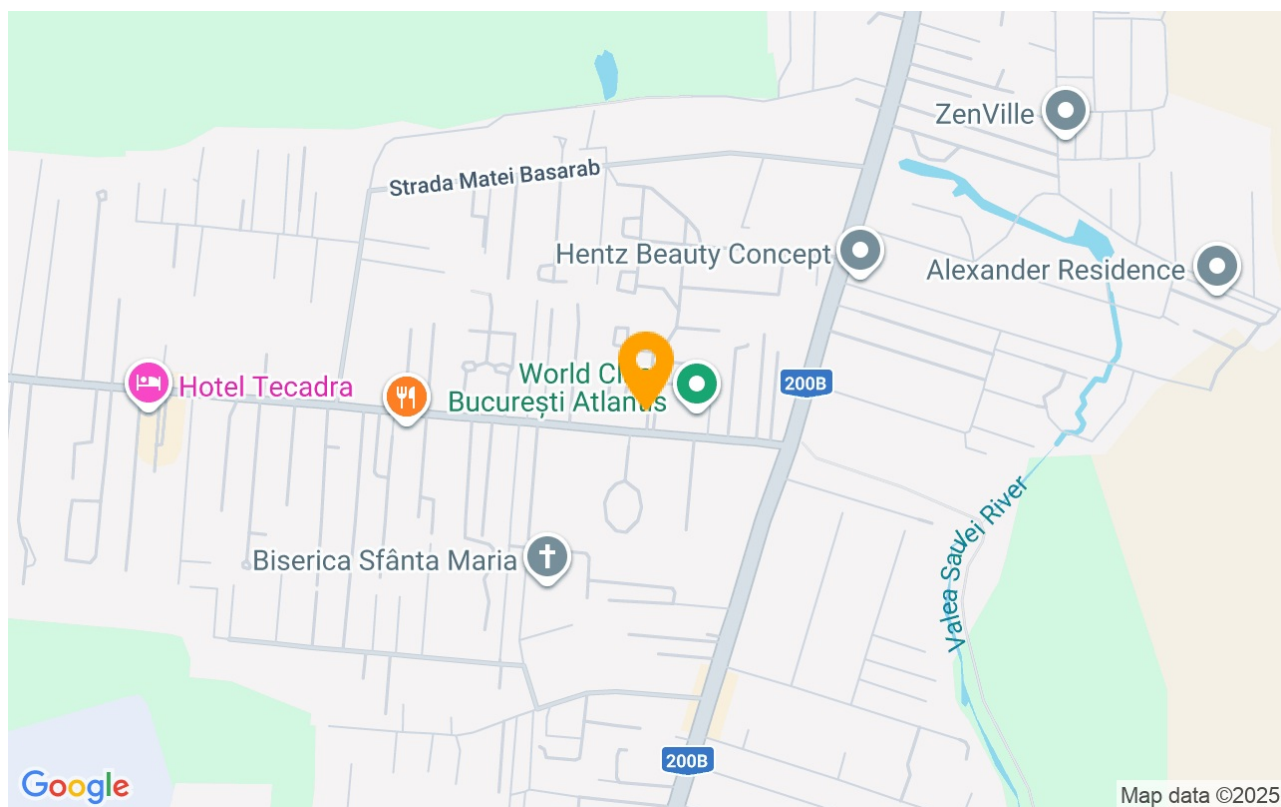
 Private heating

 Air conditioning

 Fireplace

 Swimming pool

Location



Photos

