



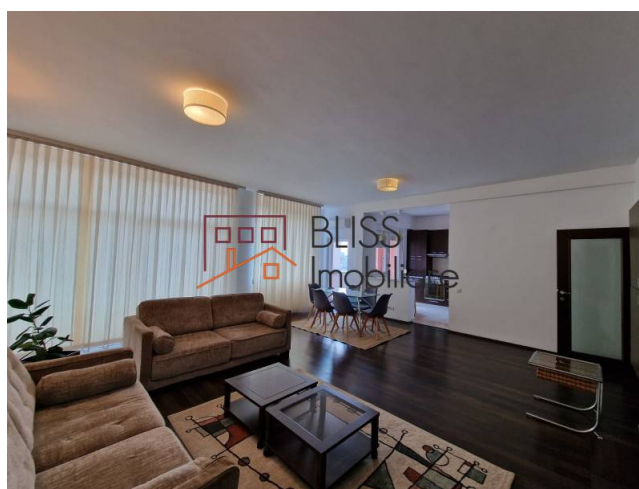
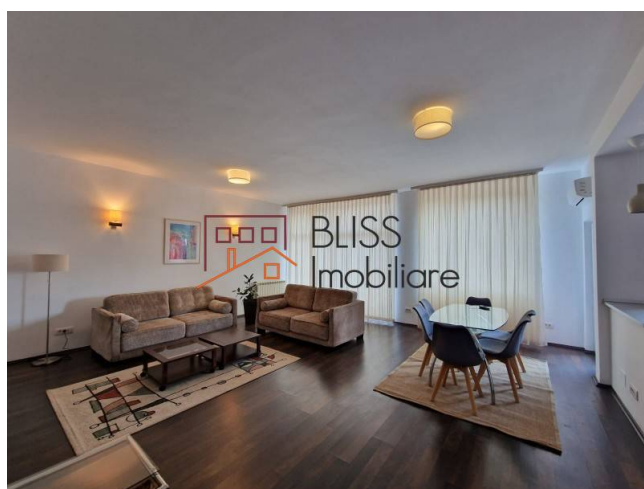
Updated on 29 Noiembrie 2023

2-bedroom apartment with underground parking space

📍 Dorobanti Beller, Bucharest

Web Reference

#4601



<https://blissimobiliare.ro/en/apartment-2-bedrooms-for-rent-dorobanti-primaverii-kiseleff-aviatorilor-bucharest-4601>

Description

BLISS Imobiliare presents a 2-bedroom apartment, located on the 4th floor of a block with a configuration of 1S+P+4.

The apartment is spacious and intelligently compartmentalized.

The apartment has an area of 110 square meters and is divided into two bedrooms, a spacious living room with open space kitchen, two bathrooms, a storage room and two balconies.

It occupies the entire floor, it is furnished and equipped with everything you need, and also benefits from an underground parking space.

Those who wish to be residents of Dorobanti can enjoy parks such as Herastrau Park, Kiseleff Park or Floreasca Park, completely landscaped by landscape architects, with a special playground for children and a modern lighting system. In addition, in Floreasca Park there is also a swimming pool set up for relaxing and spending free time. Another park in the Dorobanti area is George Calinescu Park.

Apart from the parks, in this area you can find various French stores with luxury products, supermarkets, bank branches, and boutiques and clothing showrooms, and not only that, perfect for those who want to renew their wardrobe or - and buy cosmetics and interior decorations.

This area is also famous for the large number of cafes, restaurants, patisseries, confectioners and social clubs, places where people with common interests and an active social life meet.

Also, in the area we find many schools, kindergartens and colleges, but also private clinics, such as Regina Maria.

In Dorobanti it is easy to get around with the help of public transport. The space is transited by buses 331, 301, 131, 330, 783, a special line that reaches Otopeni airport; quick access and thanks to the metro lines, bus line 2, get off at Piata Victoriei, Piata Romana or Aviatorilor stations and bus line 2, get off at Stefan cel Mare station. Thus, the center of the city of Bucharest becomes accessible.

Property details	
Rooms no.	3
Useable surface	105m²
Constructed surface	145m²
Apartment type	Apartment
Type of rooms	Independent
Type of comfort	Comfort 1
Bedrooms no.	2
Kitchens no.	1
Bathrooms no.	2
Building type	Block
Year built	2007
Config	1S+P+4
Floor	4
Balconies no.	2
State	Finished
Elevator	Yes
Parking inside	1
Earthquake risk class	Unclassified

Amenities



Equipped kitchen



Dishwasher



Furnished



Private heating



Air conditioning

Location



Photos

