

**Violetta Tudorache**

☎ +40 729 005 624

✉ [contact@blissimobiliare.ro](mailto:contact@blissimobiliare.ro)  
(mailto:contact@blissimobiliare.ro)

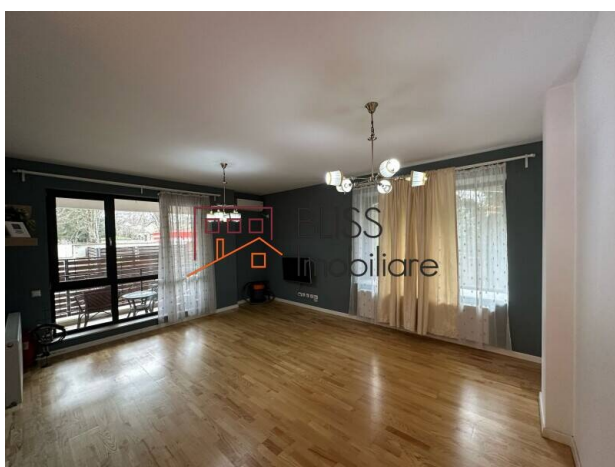
Updated on 24 March 2025

## Modern Design and Versatile Space - Home or Office

Web Reference

#46956

📍 Iancu Nicolae Jolie Ville , Bucharest / Ilfov



<https://blissimobiliare.ro/en/apartment-2-bedrooms-for-rent-iancu-nicolae-pipera-bucharest-ilfov-46956>  
(<https://blissimobiliare.ro/en/apartment-2-bedrooms-for-rent-iancu-nicolae-pipera-bucharest-ilfov-46956>)

### Description

Elegant 3-Room Apartment with Private Yard – Perfect for Living or Representative Office

## Apartment Near Jolie Ville and Several International Schools

Discover a unique 3-room apartment located in a boutique building near Jolie Ville. With a usable area of 92 sqm and a private yard of 52 sqm, this property offers a generous space, perfect for both living and a representative office, benefiting from an elegant atmosphere and a professional setting.

- Modern Design, Versatile Space, and Smart Layout
- Spacious Living Room – Ideal for relaxation, business meetings, or an elegant open-space office
- 2 Bright Bedrooms – Comfortable, soundproofed, perfect for rest or private offices
- 2 Elegant Bathrooms – Premium finishes and top-of-the-line fixtures
- Fully Furnished and Equipped Kitchen – Including a dishwasher for added convenience and efficiency
- Private Yard of 52 sqm – A generous outdoor space, ideal for outdoor meetings, small corporate events, or relaxation
- 2 Parking Spaces – Quick and convenient access for residents, employees, or clients
- Premium Features for a Modern Lifestyle and Efficient Working Environment

- Triple-layered parquet for an elegant look and durability
- Porcelanosa tiles and ceramics, recognized for their superior quality
- Grohe faucets and Pinum doors, details that make the difference
- Gewiss electrical installations and Buderus heating system for efficiency and safety
- Triple-glazed windows and soundproofed walls – Maximum peace and comfort
- 2 air conditioning units for optimal climate control year-round
- Schindler elevator for 7 persons, with granite-covered common spaces, completing the building's premium look

#### An Exceptional Location, Close to All Essential Amenities

Located in a top area, the apartment offers easy access to:

- Shopping Centers – Băneasa Shopping City, Promenada, Pipera Plaza, Jolie Ville, Strip Mall
- Supermarkets – Mega Image, Carrefour Express, Lidl, Penny
- Banks, gas stations, and private clinics
- Important car showroom







An apartment that combines modern design, premium finishes, and an excellent location, offering an exclusive lifestyle or the perfect professional space!



Property details

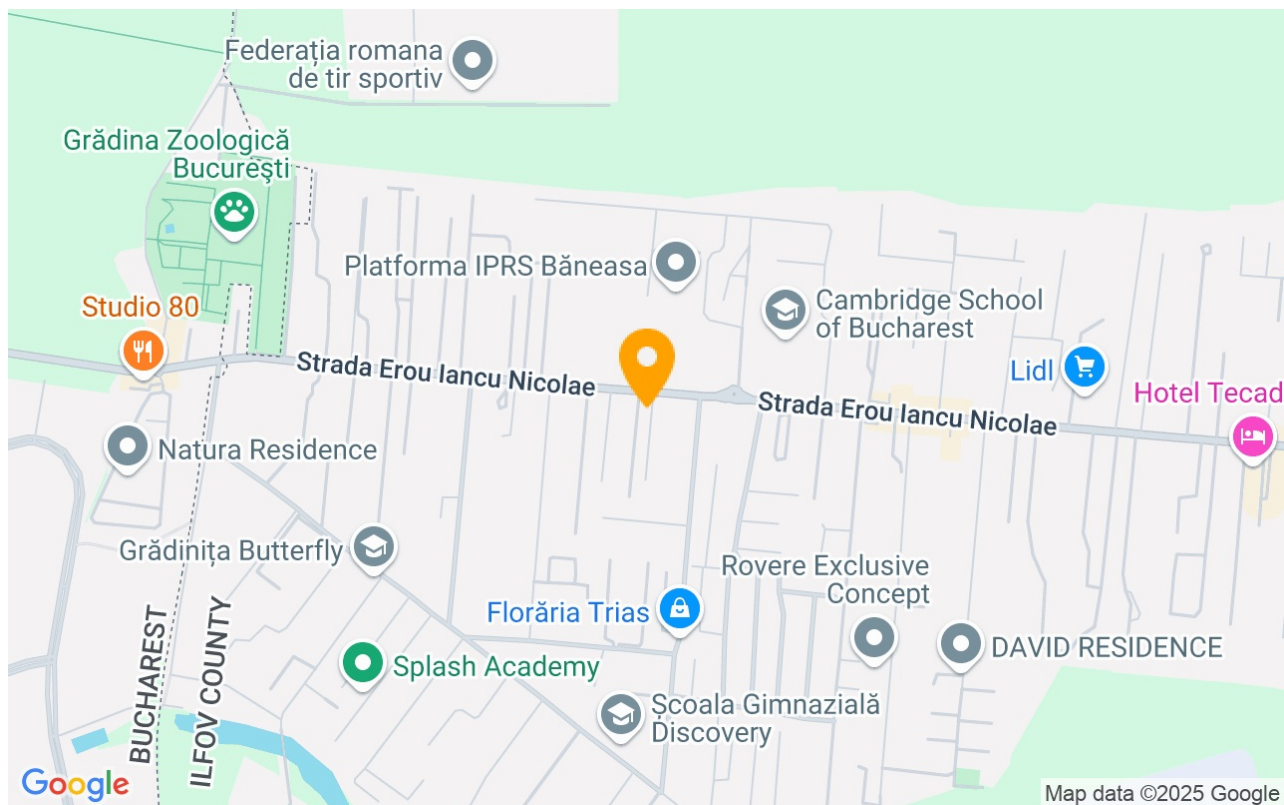
Rooms no.	3
Useable surface	92m²
Constructed surface	123m²
Apartment type	Apartment
Type of rooms	Independent
Type of comfort	Deluxe
Bedrooms no.	2
Kitchens no.	1
Bathrooms no.	2
Building type	Block
Year built	2016
Config	1S+P+2+M
Floor	High Groundfloor
Balconies no.	2
State	Finished
Parking inside	1
Parking outside	1
Earthquake risk class	Unclassified

Amenities

-  Equipped kitchen
-  Dishwasher
-  Furnished
-  Private heating
-  Suitable for office
-  Air conditioning



## Location



## Photos

