

**Violetta Tudorache**

☎ +40 729 005 624

✉ contact@blissimobiliare.ro
(mailto:contact@blissimobiliare.ro)

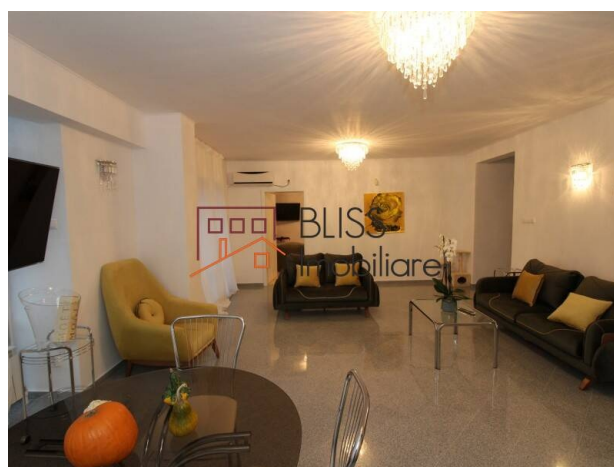
Updated on 26 October 2023

4-Bedroom Modern Duplex near Herastrau Park

Web Reference

#60353

📍 Primaverii, Bucharest



<https://blissimobiliare.ro/en/apartment-duplex-4-bedrooms-for-rent-dorobanti-primaverii-kiseleff-aviatorilor-bucharest-60353> (<https://blissimobiliare.ro/en/apartment-duplex-4-bedrooms-for-rent-dorobanti-primaverii-kiseleff-aviatorilor-bucharest-60353>)

Description

4-Bedrooms Duplex apartment, located in the exclusive Primaverii neighborhood, near Herastrau Park, Aviatorilor Metro and Floreasca area.

Located in the Primaverii Area, near Herastrau Park

The apartment is detached, has an area of 200 square meters, being located on the 3rd and 4th floors:

- On the 3rd floor: living-room, 3 bedrooms, office that can be converted into a bedroom, kitchen, 2 bathrooms and 2 terraces;
- On the 4th floor: access using the interior staircase to an open-space and a terrace overlooking the Primaverii Boulevard.

The apartment is fully furnished and equipped, modern and chic, among the facilities being: parking space in the garage, individual central heating system, air conditioning.

This residential area has quick access to Herastrau Park, commercial spaces and top educational institutions, as for public transport, nearby is the Aviatorilor metro station.







In the direct vicinity is the Floreasca neighborhood, where many restaurants and cafes with a bohemian vibe can be found, and last but not least, the area makes a quick connection with the Pipera office neighborhood, where numerous office buildings are developing..

Suitable both as a residential space and as a space for firms.

Property details

| | |
|---------------------|------------------|
| Rooms no. | 6 |
| Useable surface | 175m² |
| Constructed surface | 200m² |
| Apartment type | Duplex apartment |
| Type of rooms | Independent |
| Type of comfort | Deluxe |
| Bedrooms no. | 4 |
| Kitchens no. | 1 |
| Bathrooms no. | 2 |
| Building type | Block |
| Year built | 1990 |
| Config | P+4 |
| Floor | 3 |
| Balconies no. | 3 |
| State | Finished |
| Elevator | No |
| Parking inside | 1 |
| Parking outside | 1 |

Amenities

-  Equipped kitchen
-  Dishwasher
-  Furnished
-  Private heating
-  Suitable for office
-  Air conditioning

Location



Photos

