



Violetta Tudorache

+40 729 005 624

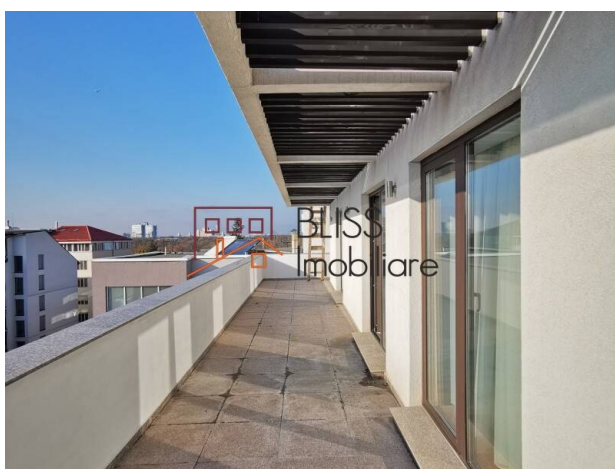
contact@blissimobiliare.ro
(mailto:contact@blissimobiliare.ro)

Updated on 23 November 2020

2 bedroom penthouse based in Primaverii area

📍 Seasons Primaverii, Primaverii, Bucharest

Web Reference
#78648



<https://blissimobiliare.ro/en/apartment-penthouse-2-bedrooms-for-rent-dorobanti-primaverii-kiseleff-aviatorilor-bucharest-78648> (<https://blissimobiliare.ro/en/apartment-penthouse-2-bedrooms-for-rent-dorobanti-primaverii-kiseleff-aviatorilor-bucharest-78648>)

Description

Modern and luxurious 2 bedroom penthouse, located in the Primaverii area, very close to the Primaverii Palace.

Close to Parcul Herastrau and to Aurel Vlaicu Metro station

The apartment is very spacious, fully furnished and is located on the 6th floor, based in a very classy block, boutique type, with high-quality finishes, which meets the criteria of an exclusive lifestyle.

The built surface of the penthouse is 261 sqm, the usable surface is 140 sqm, and the apartment has 3 terraces with a total surface of 93 sqm.






The penthouse is composed of an open space living room with a dining area, modern and fully equipped kitchen, master bedroom with dressing room and private bathroom, a bedroom with private bathroom, toilet and 3 terraces. Both bedrooms have access to a terrace.

The apartment has an underground parking place.

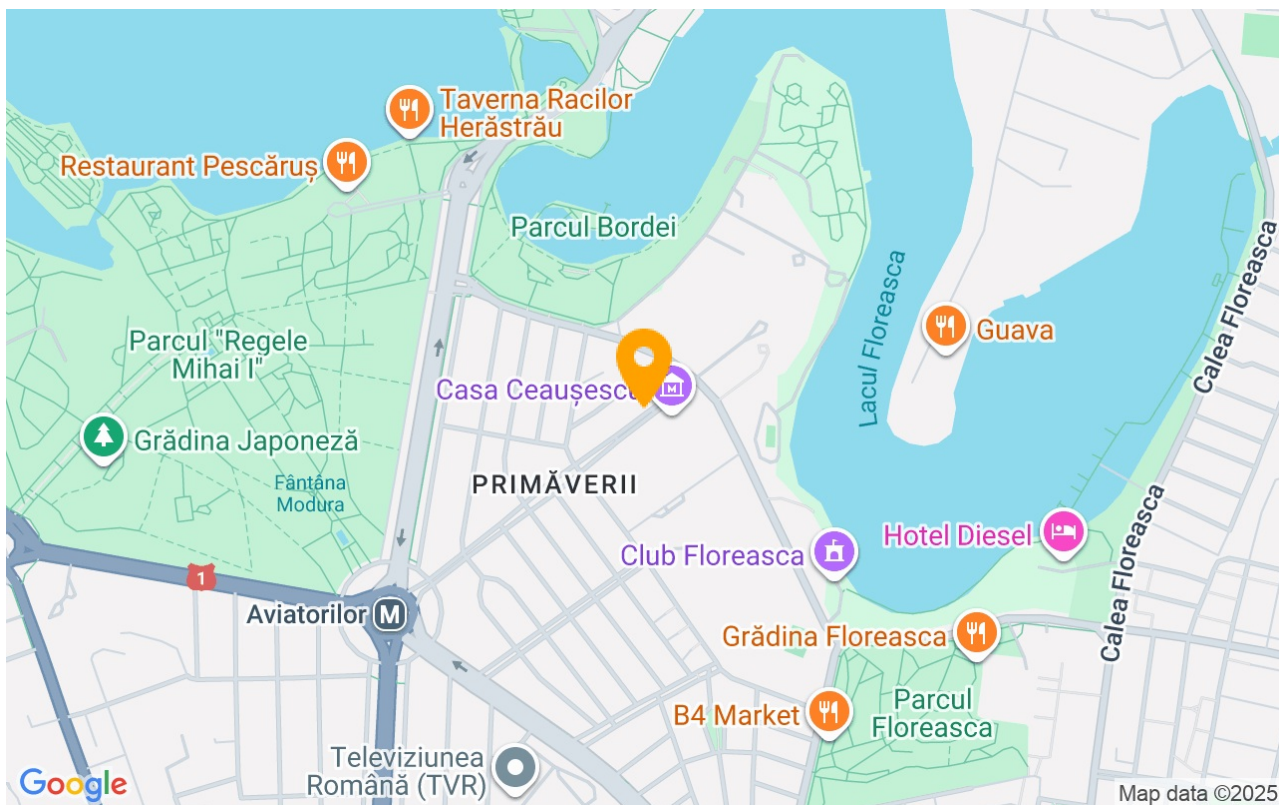
Property details

Rooms no.	3
Useable surface	140m²
Constructed surface	261m²
Apartment type	Penthouse apartment
Type of rooms	Independent
Type of comfort	Deluxe
Bedrooms no.	2
Kitchens no.	1
Bathrooms no.	2
Toilets no.	1
Building type	Block
Year built	2014
Config	1S+DS+HP+6
Floor	6
Balconies no.	3
State	Finished
Elevator	Yes
Parking inside	1

Amenities

-  Equipped kitchen
-  Furnished
-  Private heating
-  Air conditioning
-  Swimming pool

Location



Photos

