



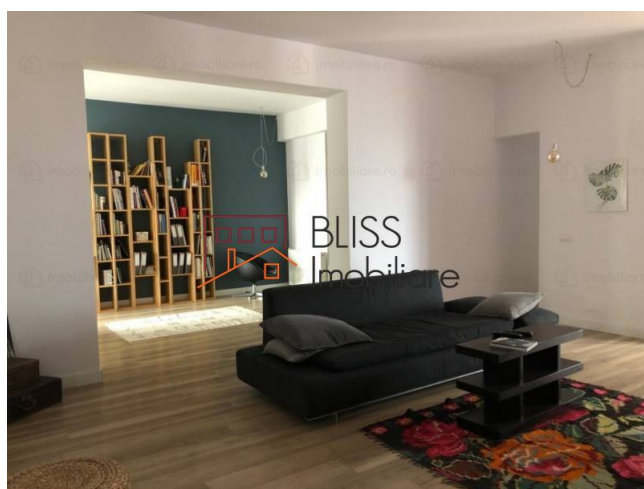
Updated on 16 Noiembrie 2021

Furnished and equipped apartment with terrace and loggia

 Calea Victoriei Nord, Bucharest

Web Reference

#84091



<https://blissimobiliare.ro/en/apartment-3-bedrooms-for-rent-piata-victoriei-bucharest-84091>

Description

Apartment located centrally, in the most coveted area of Bucharest, namely Calea Victoriei, near Victoriei Square. It benefits from a double orientation, being a bright, spacious apartment with a contemporary design.

Apartment located in Calea Victoriei area, close to Victoriei Square.

The apartment is detached, its compartmentalization being made as follows: 3 bedrooms, 2 bathrooms, generous living room. The surface is 170 sqm, featuring a terrace and loggia overlooking Calea Victoriei. The rooms are very spacious and the enclosed kitchen is equipped (including crockery).

Among the facilities of the apartment are: air conditioning, Schuco metal joinery, free-standing bathtub in one of the bathrooms, central heating, water meters, metal door at the entrance, panoramic view (without anything built opposite), curtain windows.

The building is a block of flats built in 1946, with the charm of the architecture of that time, with a height of 7 floors; the apartment is located on the 6th floor.

Calea Victoriei remains in history as perhaps the most coveted of all areas of Bucharest, due to the memories that honor it. It was and continues to be a symbol of social opulence, luxury and classic taste.






This area offers easy and fast access to many cultural landmarks such as museums, shops: restaurants, cafes,

terraces, or education: George Enescu National High School, Romanian Academy, "Nicolae Tonitza" High School of Fine Arts, Academy of Economic Studies.

Calea Victoriei connects many important points of Bucharest, such as Piata Victoriei, where there are countless options for public transport: Piata Victoriei metro station with M1 and M2 lines, buses 300, 381.

Property details	
Rooms no.	4
Constructed surface	170m²
Apartment type	Apartment
Type of rooms	Independent
Bedrooms no.	3
Kitchens no.	1
Bathrooms no.	2
Building type	Block
Year built	1946
Config	1S+P+7
Floor	6
Balconies no.	2
State	Finished
Elevator	Yes
Earthquake risk class	Rs II

Amenities

-  Equipped kitchen
-  Furnished
-  Private heating
-  Suitable for office
-  Air conditioning

Location



Photos

