



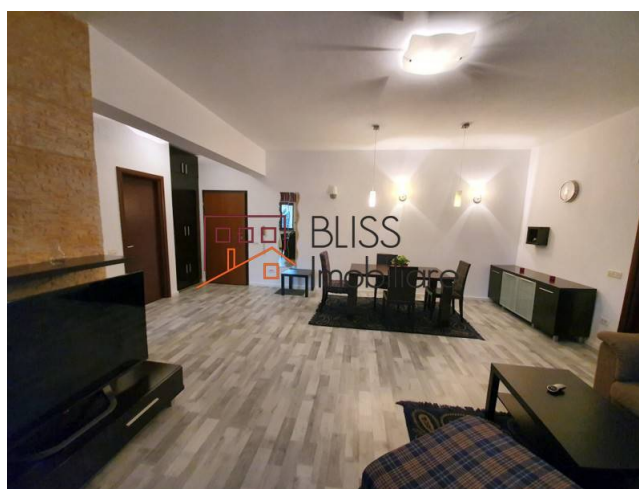
Updated on 1 Aprilie 2022

1 bedroom apartment, fully furnished, close to Herastrau Park

 Nordului, Bucharest

Web Reference

#85539



<https://blissimobiliare.ro/en/apartment-1-bedroom-for-rent-herastrau-nordului-bucharest-85539>

Description

Select 2-room apartment, located on the 1st floor, near Herastrau Park, French Village (Le Club) in a very quiet area of the capital, offers easy access to a multitude of restaurants, cafes, shops, beauty salons, gyms fitness, supermarkets, mall, bank offices, located in the immediate vicinity.

The apartment is special, both for its very good quality finishes, and for the fact that it is located in a new building, which benefits from security and 24/24 video monitoring system and has the best parking space located in the garage. . underground.

The apartment is semi-detached, with an extremely generous usable area for a 2-room apartment: 88 sqm.

At the entrance to the apartment we find a spacious dressing room, perfect for storing clothes and shoes, keeping an elegant and clean look.

The kitchen is equipped with custom-made furniture and is fully equipped (stove, oven, hood, refrigerator, dishwasher, microwave, coffee maker, toaster, kettle, etc.).

Next to the kitchen we find the service bathroom, which is also fully furnished and equipped.

The living room is very generous, here we find the dining area, where 6 people can dine and a seating area, provided with a sofa and armchairs made of textile material and a coffee table, an area that offers access to the 12 sq m terrace.

The master bedroom has a spacious dressing room and private bathroom, which is also fully furnished and equipped. The quality of the finishes places this apartment in the luxury residential area, as does the positioning of the building and the selected neighborhoods.

The neighborhood is unique and special both for families with children and for active people: - playground and spacious garden with waterfall and fish lake - Mon Jardin Parc

Property details	
Rooms no.	2
Useable surface	80m²
Constructed surface	90m²
Apartment type	Apartment
Type of rooms	Semi-independent
Bedrooms no.	1
Kitchens no.	1
Bathrooms no.	1
Toilets no.	1
Building type	Block
Year built	2005
Config	1S+P+6
Floor	1
Balconies no.	1
State	Finished
Elevator	Yes
Parking inside	1
Earthquake risk class	Unclassified

Amenities



Equipped kitchen



Dishwasher



Furnished



Private heating



Suitable for office



Air conditioning

Location



Photos

