



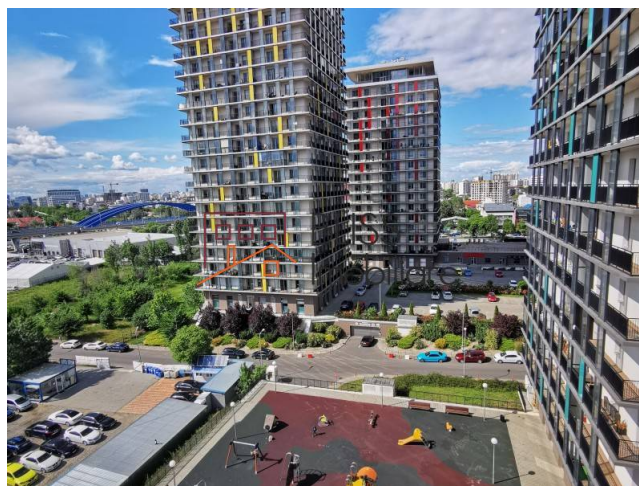
Updated on 1 Martie 2021

One bedroom apartment Asmita Gardens with underground parking

📍 Asmita Gardens, Tineretului, Bucharest

Web Reference

#86012



<https://blissimobiliare.ro/en/apartment-1-bedroom-for-rent-tineretului-bucharest-86012>

Description

One bedroom apartment situated on the 7th floor with the view to the Palatul Parlamentului (House of Parliament)

Asmita Gardens is located close to the Tineretului Park

From a large hallway you have access to all the rooms. From the living room and the fully equipped kitchen you access the balcony which is over the full width of the apartment.

The bedroom has an en suite bathroom.

A separate guest toilet also can be accessed from the main hallway.

From the spacious balcony you have a marvelous view toward the center of Bucharest. The apartment is very bright and has an underground parking place.

The Asmita Gardens complex has been constructed on a total surface of 70,000 sqm and is formed by a total of seven towers, five of which have a height of 16 floors (64 m), one tower with a height of 20 floors (80 m), and one tower with a height of 24 floors. At 92.2 m (302 ft), the 24 floor tower T3 is the tallest residential building in Bucharest.

The first three towers (5, 6 and 7) which have a city view were completed in April 2009, and the other four towers 1, 2, 3 and 4, (2x16 floors, 1x20 floors and 1x24 floors), which have a river view were completed in September 2009.

Property details	
Rooms no.	2
Useable surface	55m²
Constructed surface	87m²
Apartment type	Apartment
Type of rooms	Independent
Type of comfort	Comfort 1
Bedrooms no.	1
Kitchens no.	1
Bathrooms no.	1
Toilets no.	1
Building type	Block
Year built	2009
Config	2S+P+21
Floor	7
Balconies no.	1
State	Finished
Elevator	Yes
Parking inside	1

Amenities



Equipped kitchen



Not furnished (Willing to furnish)



Building heating

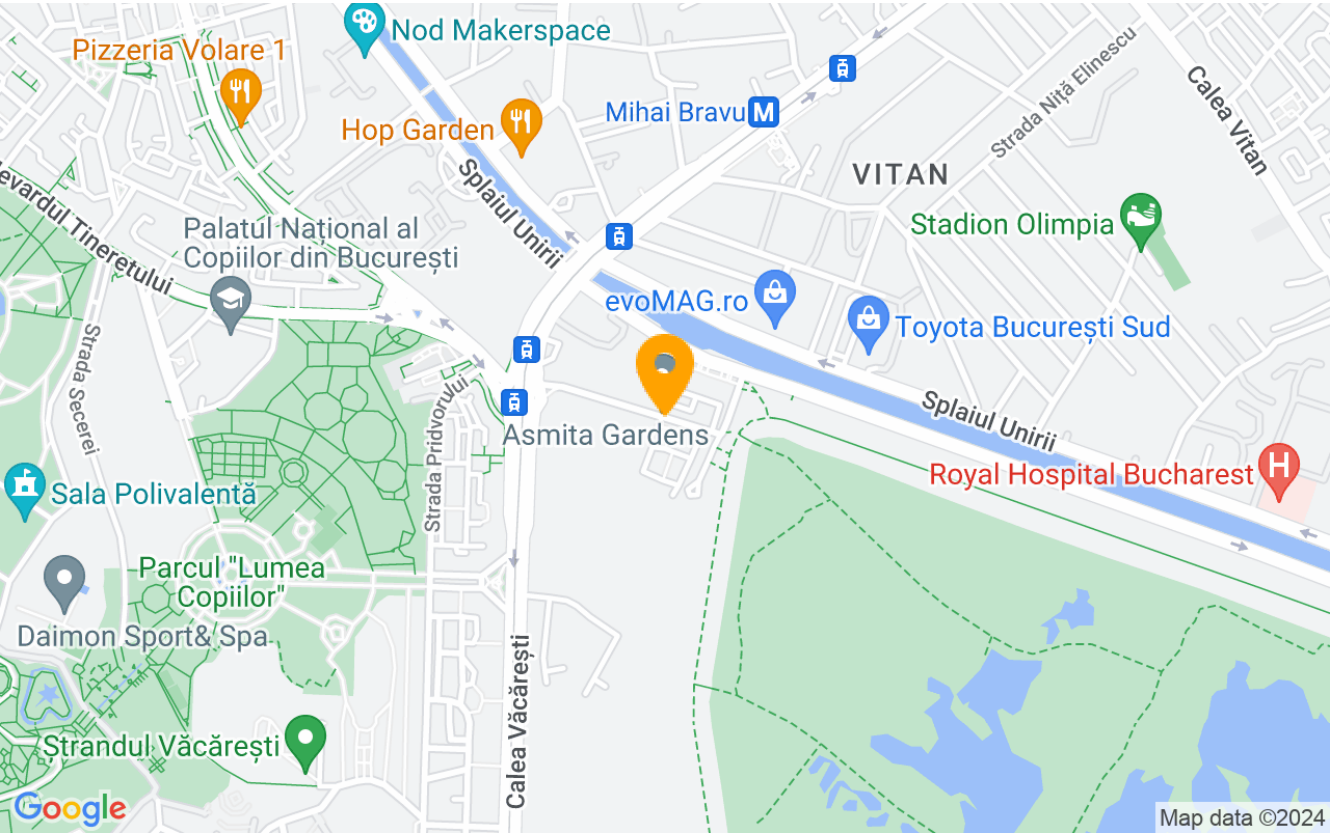


Suitable for office



Air conditioning

Location



Photos

