



Violetta Tudorache

+40 729 005 624

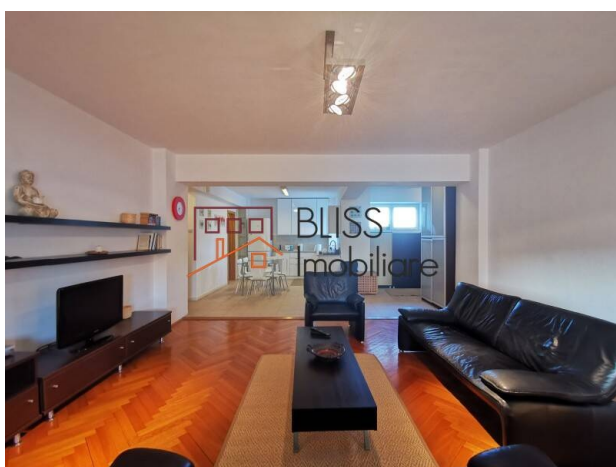
contact@blissimobiliare.ro
(mailto:contact@blissimobiliare.ro)

Updated on 21 September 2022

generous 3 bedroom apartment with underground parking

Web Reference
#88129

📍 Piata Victoriei, Bucharest



<https://blissimobiliare.ro/en/apartment-3-bedrooms-for-rent-piata-victoriei-bucharest-88129>
(<https://blissimobiliare.ro/en/apartment-3-bedrooms-for-rent-piata-victoriei-bucharest-88129>)

Description

This generous and well divided 3 bedroom apartment is located on the 5th floor of a very solid 2000 building. The building has 6 levels above the ground and two underground with parking and storage areas.

Short distance to Parcul Kiseleff with many shops in the nearby area

This spacious apartment gives you a welcome feeling when entering. From a hallway you enter the bright open living room direct connected to the open fully equipped kitchen. The kitchen has two parts with the cooking area in a closed off room.

From another hallway you enter the three bedrooms of which one with the en suite bathroom and with the other bathroom accessible from the hallway. From this hallway you also enter the technical and storage area. A separate guest toilet is also available. The bedrooms are very spacious.

The heating is through a building heating system which is very well maintained. The maintenance of this block is well taken care off and all residents care about keeping this to standards.

In the underground you will have a parking place belonging to this apartment and included in a rental agreement. In the minus 2 this apartment has a 6 sqm storage area which is not part of a rental agreement, but will be sold together with the apartment and parking.

Located in a prime location just a few steps away from the Piata Victoriei with the metro station and just a few steps away from Bulevard Kiseleff and the Kiseleff park.

As this is situated between Bulevard Kiseleff and Bulevard Ion Mihalache you benefit from many shops, restaurants, markets, public transport, parks etc just in the direct vicinity. This is a very easy accessible and lively area which will offer much of living pleasure.


This property is very suitable for residential use and for use as office. Even a combined home office is an excellent option for this property.

Property details


Rooms no.	4
Useable surface	125m ²
Constructed surface	140m ²
Apartment type	Apartment
Type of rooms	Semi-independent
Type of comfort	Comfort 1
Bedrooms no.	3
Kitchens no.	1
Bathrooms no.	2
Toilets no.	1
Building type	Block
Year built	2000
Config	2S+P+6
Floor	5
State	Finished
Elevator	Yes
Parking inside	1
Storage no.	1
Earthquake risk class	Unclassified

Amenities

 Equipped kitchen

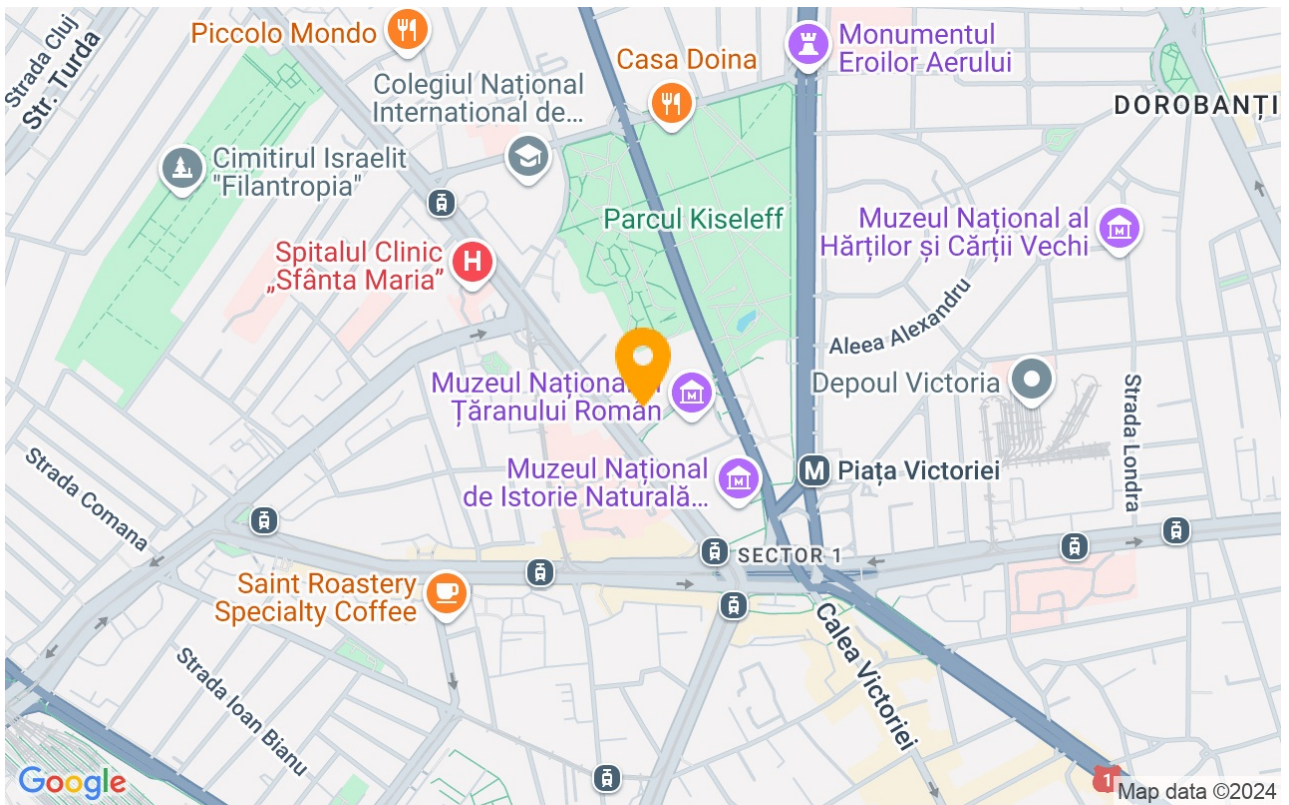
 Dishwasher

 Furnished

 Building heating

 Air conditioning

Location



Photos

