



Violetta Tudorache

+40 729 005 624

contact@blissimobiliare.ro
(mailto:contact@blissimobiliare.ro)

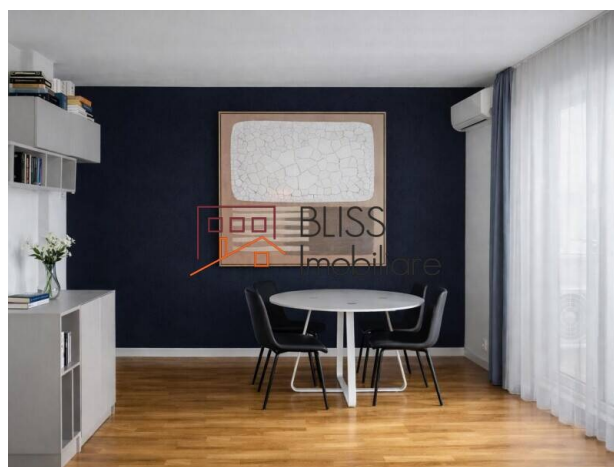
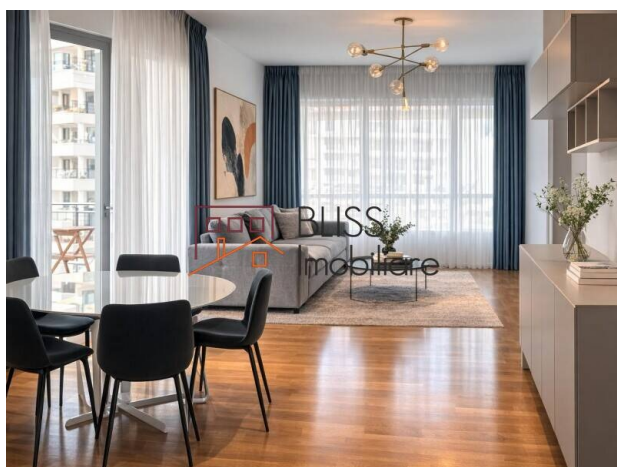
Updated on 31 March 2026

Premium 1-Bedroom Apartment

LUXURIA DOMENII Residence, Expozitiei,
Bucharest

730 EUR +VAT / month

Web Reference
#92546



<https://blissimobiliare.ro/en/apartment-1-bedroom-for-rent-domenii-1-mai-grivitei-bucharest-92546>
(<https://blissimobiliare.ro/en/apartment-1-bedroom-for-rent-domenii-1-mai-grivitei-bucharest-92546>)

Description

Modern 1-Bedroom Apartment - Luxuria Domenii Residence, Expoziției Area

Modernly Furnished Home With Included Indoor Parking

We present a premium apartment located in the top-tier Luxuria Domenii residential complex, situated in the Expoziției – Romexpo area, Bucharest's new business hub. Located on the 7th floor of a building completed in 2020, this property offers a high standard of comfort and elegance, perfect for those working in the North area.

Contemporary Design and Efficient Layout

The apartment is brand new, featuring premium finishes and a detached layout that maximizes usable space:

- Usable Area: 56 sqm (79 sqm built area).
- Living Area: Spacious and bright living room, elegantly furnished, with access to a private terrace.
- Bedroom: Modernly furnished, providing a peaceful atmosphere for rest.
- Kitchen: Separate and fully equipped with state-of-the-art appliances, including a dishwasher.

Comfort and Exclusive Amenities

Living in Luxuria Residence, you benefit from all the advantages of a modern and secure residential complex:

- Climate Control: High-performance air conditioning system and central heating.
- Parking: Includes one indoor parking space, an essential feature for this dynamic area.
- Security: Secured access and permanent monitoring within the complex.

Location: Bucharest's New Business Hub

The strategic positioning ensures excellent connectivity to major points of interest:

- Business: Easy access to Piața Presei, Ana Towers, and Expo Business Park.
- Leisure: In the immediate proximity of Herăstrău Park and the Romexpo exhibition center.
- Transportation: Quick connection to Otopeni Airport and the city center.

At BLISS Imobiliare, we ensure a seamless experience through professionalism and market expertise. BLISS Imobiliare guides you with clarity and structure.

Property details

Rooms no.	2
Useable surface	56m ²
Constructed surface	79m ²
Apartment type	Apartment
Type of rooms	Independent
Type of comfort	Comfort 1
Bedrooms no.	1
Kitchens no.	1
Bathrooms no.	1
Building type	Block
Year built	2020
Config	P+11
Floor	7
Balconies no.	1
State	Finished
Elevator	Yes
Parking inside	1

Amenities

 Equipped kitchen

 Dishwasher

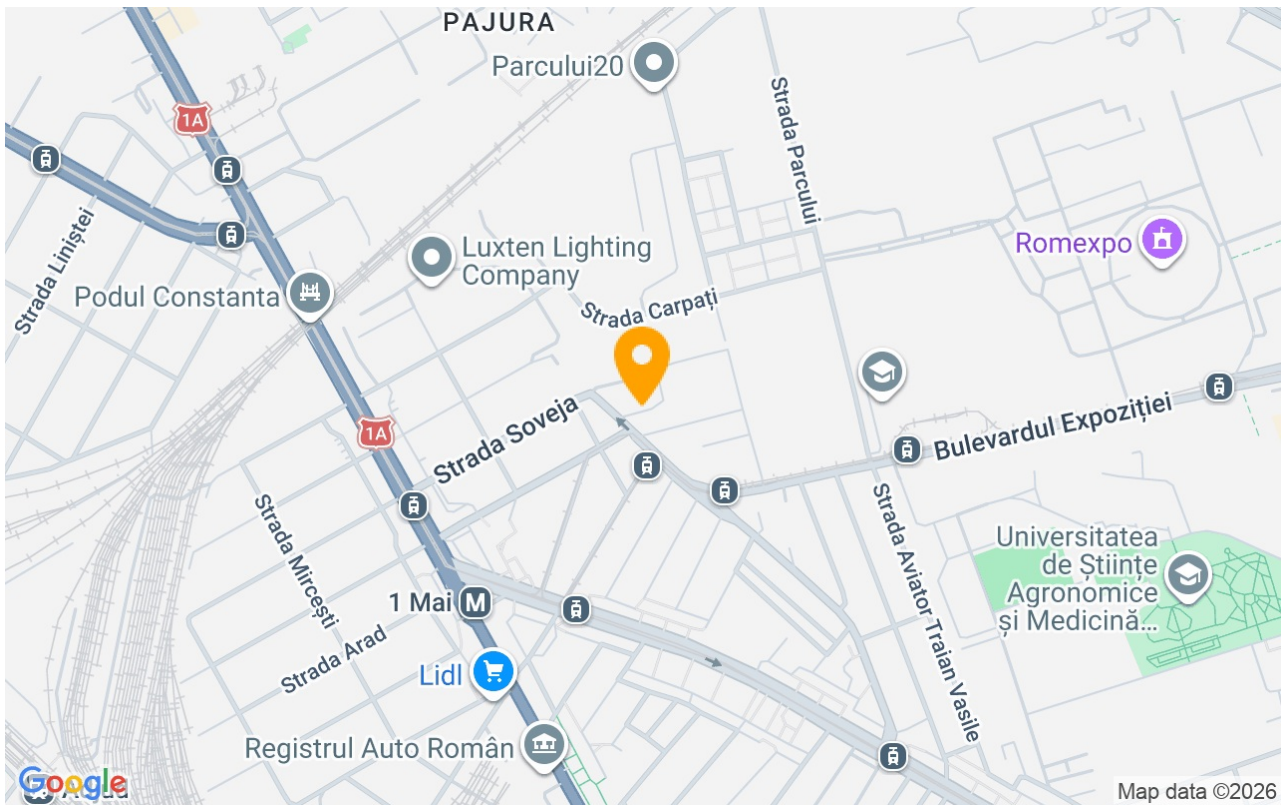
 Furnished

 Building heating

 Suitable for office

 Air conditioning

Location



Photos

