



Violetta Tudorache

+40 729 005 624

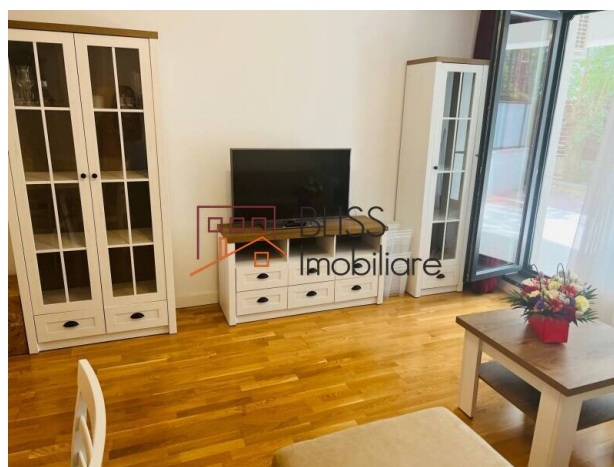
contact@blissimobiliare.ro
(<mailto:contact@blissimobiliare.ro>)

Updated on 1 November 2024

Apartment of 80 sqm and private yard of 70 sqm

Web Reference
#92721

📍 Residence5 133, Iancu Nicolae, Bucharest / Ilfov



<https://blissimobiliare.ro/en/apartment-2-bedrooms-for-rent-iancu-nicolae-pipera-bucharest-ilfov-92721>
(<https://blissimobiliare.ro/en/apartment-2-bedrooms-for-rent-iancu-nicolae-pipera-bucharest-ilfov-92721>)

Description

BLISS Imobiliare presents a 2 bedroom apartment located in the Iancu Nicolae area.

Apartment located in a permanently guarded complex

The apartment has a usable area of 80 square meters and has a spacious living room that integrates the dining area and the fully equipped open space kitchen, 2 bedrooms, 1 bathroom, 1 service toilet and 1 terrace.

Furnished and equipped, it is located on the ground floor of a new block, put into use in 2018 and has a private yard of 70sqm.

The apartment features Buderus individual heating system, air conditioning, 2 underground parking spaces and a storage space.

Access to the complex is private, the barrier and BGS guard 24/24.

The Iancu Nicolae area is one of the three sub-areas of the Pipera neighborhood, considered by many to be a premium and exclusive residential area where modern and luxurious architecture can be found.





Schools and educational institutes such as the British School, Cambridge School of Bucharest, Mark Twain International School and many other top kindergartens and schools mark one of the advantages of the Iancu Nicolae area, which has become a center of international and bilingual education.

In terms of shopping centers, the area benefits from numerous shops, boutiques and most importantly, nearby malls, such as Baneasa Shopping City and Promenada Mall, but also commercial areas such as Pipera Plaza, Jolie Ville and Strip Mall.

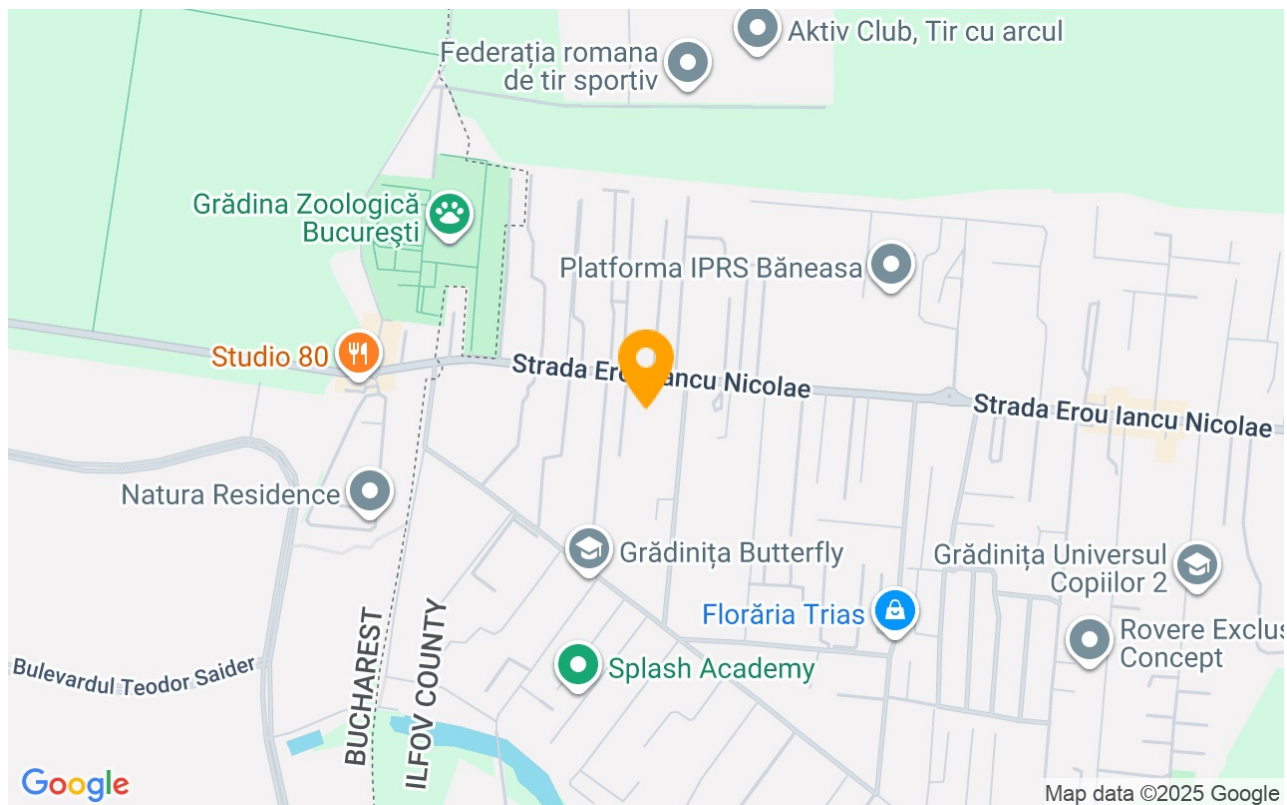
Property details

Rooms no.	3
Useable surface	80m²
Constructed surface	100m²
Apartment type	Apartment
Type of rooms	Independent
Type of comfort	Deluxe
Bedrooms no.	2
Kitchens no.	1
Bathrooms no.	1
Toilets no.	1
Building type	Block
Year built	2018
Config	1S+P+4
Floor	Groundfloor
Balconies no.	1
State	Finished
Elevator	Yes
Parking inside	2
Storage no.	1
Common service charges	100.00 EUR

Amenities

-  Equipped kitchen
-  Furnished
-  Private heating
-  Air conditioning

Location



Photos

