



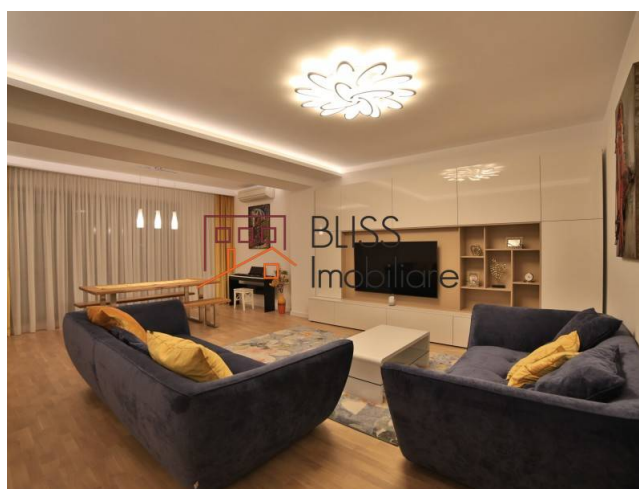
Updated on 8 Martie 2022

Fully furnished and equipped 3 bedroom apartment

Web Reference

#93509

 Capital Residence Caramfil, Aviatiei, Bucharest



<https://blissimobiliare.ro/en/apartment-3-bedrooms-for-rent-aviatiei-promenada-mall-metro-pipera-bucharest-93509>

Description

3 bedroom apartment, located in a new building, built in 2019, with easy access to Herastrau Park, Aurel Vlaicu subway, public and private kindergartens, Herastrau school, airport.

Located near Herastrau Park and Aviatorilor subway.

The building offers tranquillity and privacy, as it has only 2 apartments on each floor, served by a Schindler elevator. The building is ISU authorized (detection, fire alert and smoke evacuation).

The apartment is located on the 4th floor, in an apartment block composed of 6 floors and a basement, benefiting from a superb view of the city.

The compartmentalization is made as follows: two bedrooms with an area of 20 sqm, which have access to a balcony with an area of 8.5 sqm, overlooking the north side, a bedroom of 12.5 sqm, dressing room of 5 sqm with washing machine, two bathrooms of 5 sqm.

The living area and the dining area are common, having a total of 39 square meters. The kitchen is closed, having 12 sqm, and benefits from a storage room of 5.5 sqm (for storing bicycles on support, ski equipment, cycling, etc.).

The terrace has an area of 13.5 sqm, is closed with glass windows with magnetic frames, being in the same time heated and can be used even on cooler days.

The finishes are of high quality, the apartment benefiting from solid wood parquet.

Among its advantages is the boiler, the heating of the apartment being made through radiators, individually, by simple controls on Smartphone.

The apartment is luxuriously furnished and equipped, with Bosch smart home appliances, such as a dishwasher and remote control of the air conditioning.

The usable area of the apartment is 155 sqm, the space being generous. The apartment also has two underground parking spaces, with a parking capacity of three vehicles, one of the places totaling 22 sqm.

The Herastrau area benefits from easy access to all means of public transport and, around it, all the points of interest of the city are gathered, being one of the most exclusive and safe areas in the northern part of Bucharest.

It is surrounded by Herastrau Park and Lake, the largest park in the capital, restaurants and cafes, top educational institutions and shopping centers. The area facilitates and encourages outdoor sports and relaxation activities.

Near the apartment are several crucial points of the city: Promenada Mall, Herastrau school, Regina Maria Clinic, high schools, public transport such as Aviatorilor subway, crossed by the M2 line and 112 bus.

Last but not least, the apartment benefits from easy access to important arteries that cross the city such as Calea Floreasca, Barbu Vacarescu Boulevard, Soseaua Pipera.

Property details	
Rooms no.	4
Useable surface	155m ²
Apartment type	Apartment
Type of rooms	Independent
Type of comfort	Comfort 1
Bedrooms no.	3
Kitchens no.	1
Bathrooms no.	2
Building type	Block
Year built	2019
Config	1S+P+6
Floor	4
Balconies no.	2
State	Finished
Elevator	Yes
Parking inside	2

Amenities



Equipped kitchen



Dishwasher



Furnished



Private heating



Air conditioning

Location



Photos

