



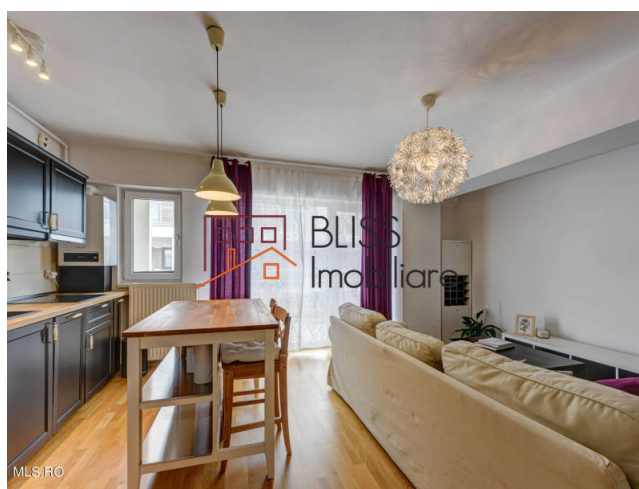
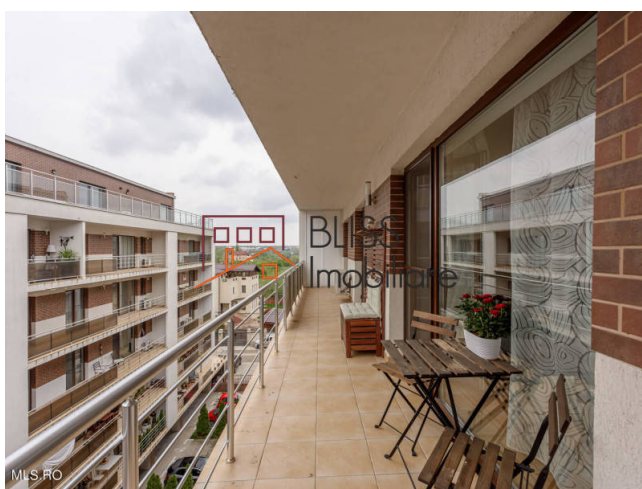
Updated on 9 Iunie 2021

Modern apartment in Park Residence 5 near the Baneasa lake

Web Reference

#94408

📍 Park Residences 5, Lacul Baneasa, Bucharest



<https://blissimobiliare.ro/en/apartment-2-bedrooms-for-sale-baneasa-sisesti-jandarmerie-straulesti-sector-1-bucharest-94408>

Description

2-bedroom apartment in Baneasa area, Park Residence 5, residential complex completed in 2017.

Apartment in residential complex, Baneasa area with access to the park

The apartment is located on the 4th floor with a total usable area of 91.8 sqm, the space being composed of: living area with open kitchen (surface 33.71 sqm), bedroom area, where we have the master bedroom with bathroom and dressing room (surface 19 sqm), the secondary bedroom (12 sqm) with access to the bathroom in the hall and a beautiful terrace with access from each room (usable area of 16 sqm).

The complex consists of 2 Gf + 5 buildings, secure access with barrier for the parking area, benefiting of permanent security, video surveillance and intercom at each block entrance.

There is 1 spot in the covered parking lot and close to access to the building, extra money, on request.

Points of interest:

- 200 m RATB station: 112, 149, 331bis
- 200 m Lake Baneasa
- 4 km Baneasa Shopping City, Carrefour Feeria

- 3 km Baneasa Airport
- 3 km Free Press Square
- 900 m Herastrau Park
- 900 m Petrom City
- 850 m Genesis Colegiate School and Kindergarten

Property details	
Rooms no.	3
Useable surface	76m²
Constructed surface	92m²
Apartment type	Apartment
Type of rooms	Independent
Bedrooms no.	2
Kitchens no.	1
Bathrooms no.	2
Building type	Block
Year built	2017
Config	P+5
Floor	4
Balconies no.	1
State	Finished
Elevator	Yes

Amenities



Equipped kitchen



Furnished



Swimming pool

Location



Photos

