



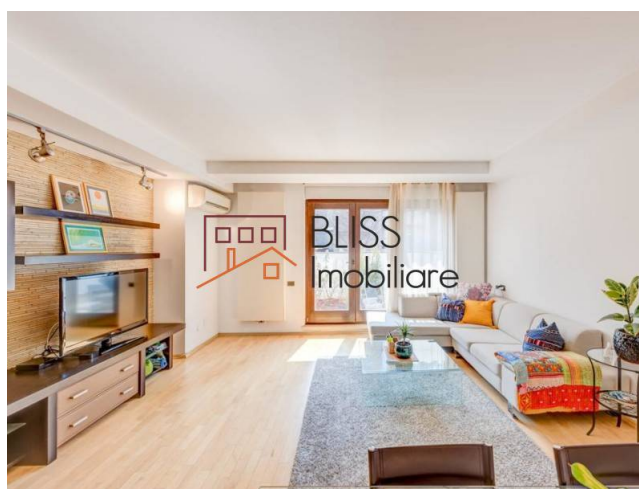
Updated on 26 Septembrie 2023

## 2 bedroom apartment with private yard and 1 parking space

📍 Dorobanti (Piata), Bucharest

Web Reference

**#9485**



<https://blissimobiliare.ro/en/apartment-2-bedrooms-for-rent-dorobanti-primaverii-kiseleff-aviatorilor-bucharest-9485>

### Description

Spacious and bright 2 bedroom apartment, located on the ground floor, in a block completed in 2006, in the Dorobanti Square area.

### About 10 minutes drive from Kiseleff and Herăstrău Parks.

The apartment has a usable area of 82 square meters and also has a private yard of 29 square meters.

It consists of a modern furnished living room with an integrated dining area and access to the terrace and courtyard, a fully equipped kitchen, 2 bedrooms and 1 bay with a bathtub.

It benefits from quality finishing, numerous storage spaces, its own central heating system, air conditioning and 1 parking space.

It is located just 10 minutes walk from Floreasca Park. The Kiseleff, Circului and Herăstrău Parks are also located in the area, approximately 10 minutes by car.

In the area there are numerous shops, restaurants, cafes, beauty salons, medical and educational centers, museums.

Piața Dorobanti bus station is just a 5-minute walk away and the Aviatorilor, Ștefan cel Mare and Piața Victoriei metro stations are an 18-minute walk away.



Property details	
Rooms no.	3
Useable surface	82m²
Constructed surface	123m²
Apartment type	Apartment
Type of rooms	Independent
Type of comfort	Comfort 1
Bedrooms no.	2
Kitchens no.	1
Bathrooms no.	1
Building type	Block
Year built	2006
Config	1S+P+4
Floor	Groundfloor
Balconies no.	1
State	Finished
Elevator	Yes
Parking inside	1
Average cost of utilities per month	190.00 EUR

Amenities



Equipped kitchen



Dishwasher



Furnished



Private heating



Air conditioning

Location



Photos

