



Updated on 14 Martie 2021

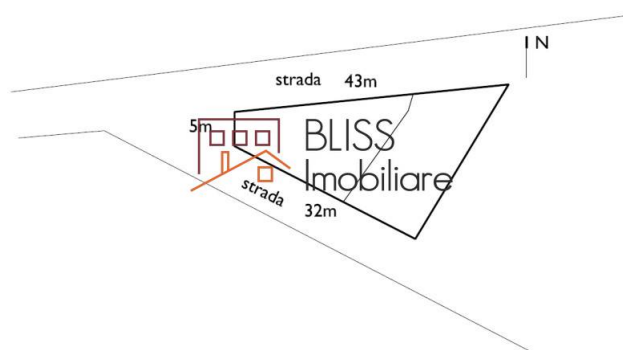
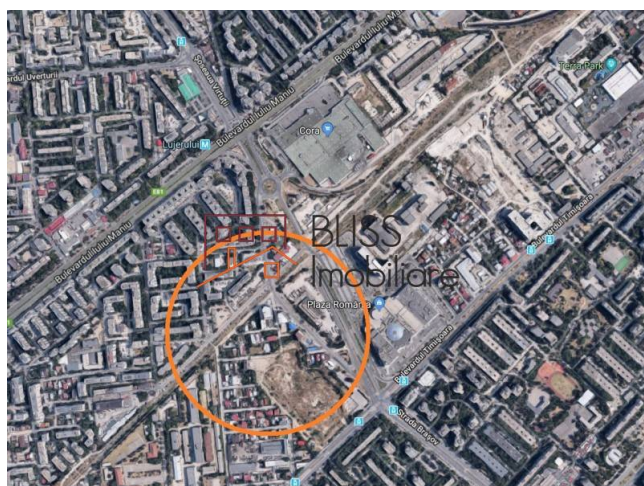
## Land of 545 m<sup>2</sup>

 Lujerului, Bucharest

**520,000 EUR**  
**954 EUR / m<sup>2</sup>**

Web Reference

**#900009**



<https://blissimobiliare.ro/en/land-for-sale-lujerului-bucharest-900009>

### Description

The land is located in the Lujerului area, between Militari and Drumul Taberei, in a vibrant developing area. It is 7 minutes from the metro station Lujerului and offers easy access to the rest of the public transport.

### Land with double opening.

The land consists of two plots with an area of 274 and 271 square meters. On one of the lands there is a house on the ground floor and on the second one a house on two floors. The land is connected to all the utilities.


It is suitable for residential development. A new apartment block of P+10E has been developed in the vicinity of the plot.


According to PUZ Coordinator Sector 6 the land is located in the M2 area, with maximum P + 14, CUT = 3, POT max = 70% with the possibility of covering the rest of the land in proportion of 75% with buildings with max. 2 levels.


Neighborhoods: Mall Plaza Romania, Cora, Lidl, Anchor Office Plaza.


Land details	
Land type	Constructible land
Size	545 m <sup>2</sup>
Land usage coefficient	3
Percentage of occupation	70%
Street openings	28 m / 25.6 m
Road type	Asphalt
Protected area	No


Utilities

 Electricity

 Water

 Natural gas

 Sewage

 Telecom

Location

