



Updated on 14 Martie 2021

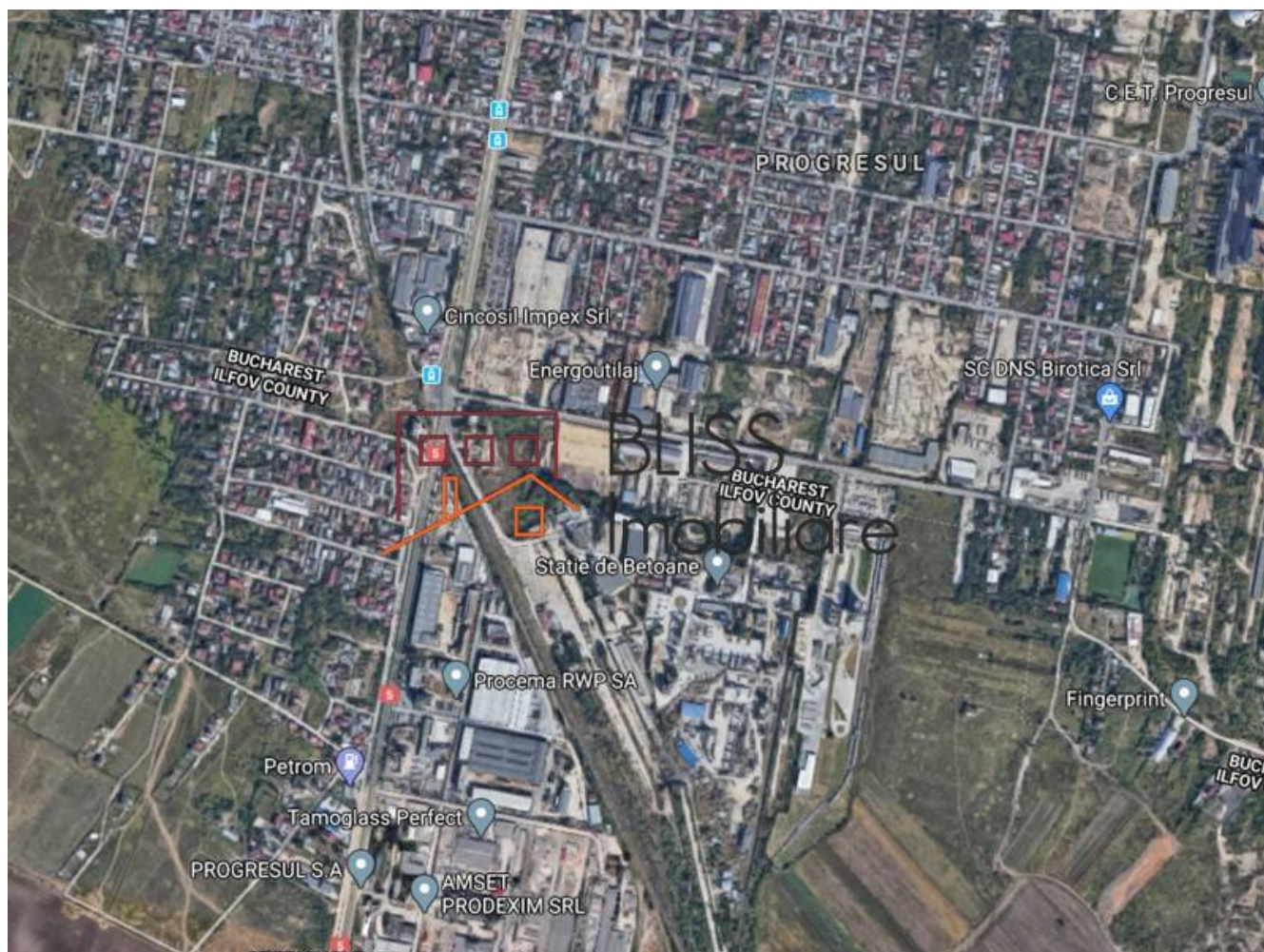
Land of 19.500 m²

Progresul, Bucharest

4,686,000 EUR +VAT
240 EUR / m²

Web Reference

#900334



<https://blissimobiliare.ro/en/land-for-sale-progresul-bucharest-900334>

Description

Land of 19,500 sqm near the Soseaua Giurgiului.

On the site are 10 buildings with an area of approximately 7200sqm:

- 3 annexes buildings
- administrative office
- hall and annexes

The land has an rectangular shape with a street opening of approximately 90m.

According to PUZ Sector 4 the land is located in the reference territorial unit CB1, having the following admitted

urban indicators:






- POT max = 50%
- CUT max = 3
- Hmax = not limited

Proposed PUZ - RLU provisions:

- POT = 45.76%
- CUT = 0.64
- Height regime: B + P + 2E.

Land details	
Land type	Constructible land
Size	19,500 m ²
Street openings	
Road type	Asphalt
Protected area	No

Utilities

-  Electricity
-  Water
-  Natural gas
-  Sewage
-  Telecom

Location

