




Updated on 14 Martie 2021

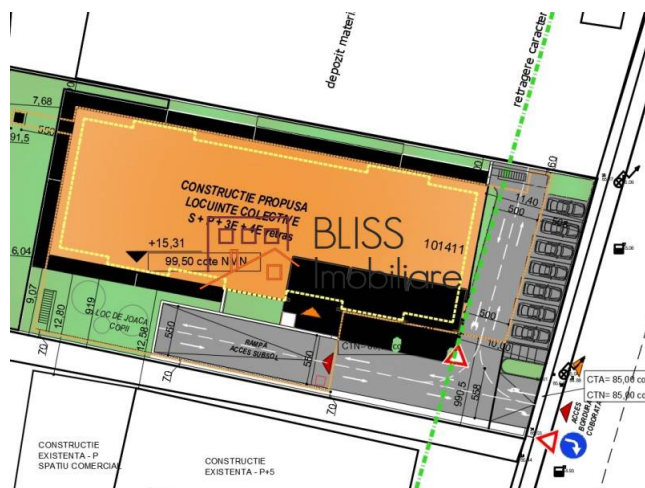
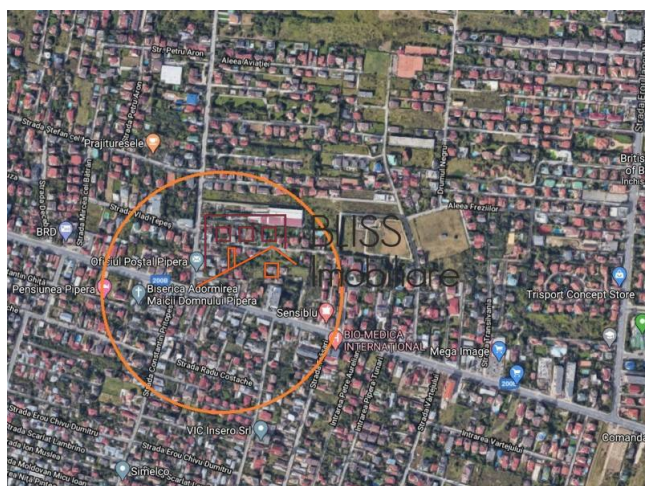
Land of 1.860 m²

 Pipera, Bucharest / Ilfov

1,050,000 EUR
565 EUR / m²

Web Reference

#900336



<https://blissimobiliare.ro/en/land-for-sale-iancu-nicolae-pipera-bucharest-ilfov-900336>

Description

Land located in the Baneasa - Pipera area with opening to the boulevard.

The land is ideal for residential development.

The land has a building permit for a residential project with 42 apartments.

- Land area = 1860 sqm
- Built area - 745.29sqm (by projection for POT calculation)
- Developed area - 3600.49sqm (above ground)
- Total developed area - 4776.76sqm (including basement)
- Terrace area - 464.82sqm
- Built surface ground floor - 661.31sqm
- Area of green spaces - 483.03 sqm (ground floor plan)
- Roadway and parking area - 484.55 sqm (ground floor)
- Pedestrian and platform area - 231.11 sqm (ground floor)
- POT - 39.97% CUT - 1.93
- Maximum height at the cornice: Hmax = 14.50m
- 50 parking spaces - 11 above-ground and 39 underground.

| Land details | |
|--------------------------|----------------------|
| Land type | Constructible land |
| Size | 1,860 m ² |
| Land usage coefficient | 1.93 |
| Percentage of occupation | 40% |
| Street openings | 30 m |
| Road type | Asphalt |
| Protected area | No |

Utilities

 Electricity

 Water

 Sewage

 Telecom

Location

