



Updated on 27 Ianuarie 2021

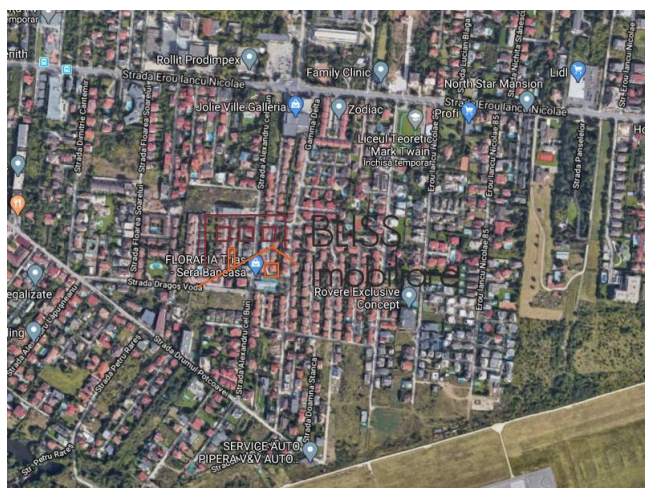
Land of 1,000 m²

 Iancu Nicolae Jolie Ville , Bucharest / Ilfov

315,000 EUR
225 EUR / m²

Web Reference

#900516



<https://blissimobiliare.ro/en/land-for-sale-iancu-nicolae-pipera-bucharest-ilfov-900516>

Description

Land in Erou Iancu Nicolae Jolie Ville area, 21ml opening on a 4m asphalt easement road, with exit to Potcoavei road.

The land is located between houses, in a premium residential area. It benefits from all utilities: running water, sewerage, gas, electricity. It has a rectangular shape of 21 x 48 m.


The land is for sale with an urbanism certificate for the construction of the Gf + 1F house, CUT 1, POT 40%, it has issued the permits for the construction of a passive house.


The land is five - ten minutes away from:


- international schools: American School, British School, Lycee Francais, Mark Twain or Avenor;
- malls: Baneasa Shopping City, Jolie Ville or Strip Mall;
- social and sports clubs: Stejarii Country Club, Atlantis Club or World Class at Jolie Ville;
- public transport


Land details	
Land type	Constructible land
Size	1,400 m ²
Land usage coefficient	1
Percentage of occupation	40%
Street openings	21 m
Road type	Asphalt
Protected area	No


Utilities

 Electricity

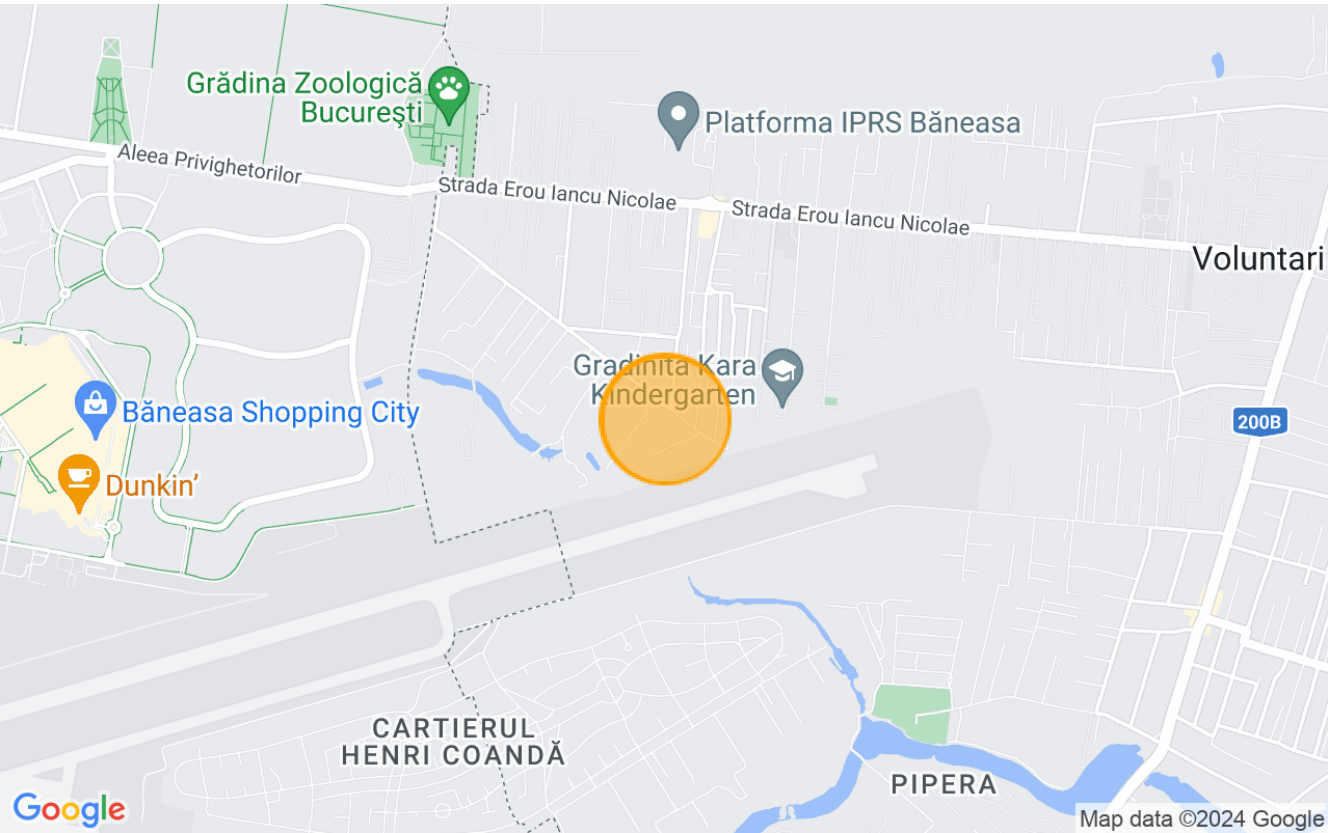
 Water

 Natural gas

 Sewage

 Telecom

Location



Photos

