



Isfahan Doekhie

+40 729 896 897

contact@blissimobiliare.ro

(<mailto:contact@blissimobiliare.ro>)

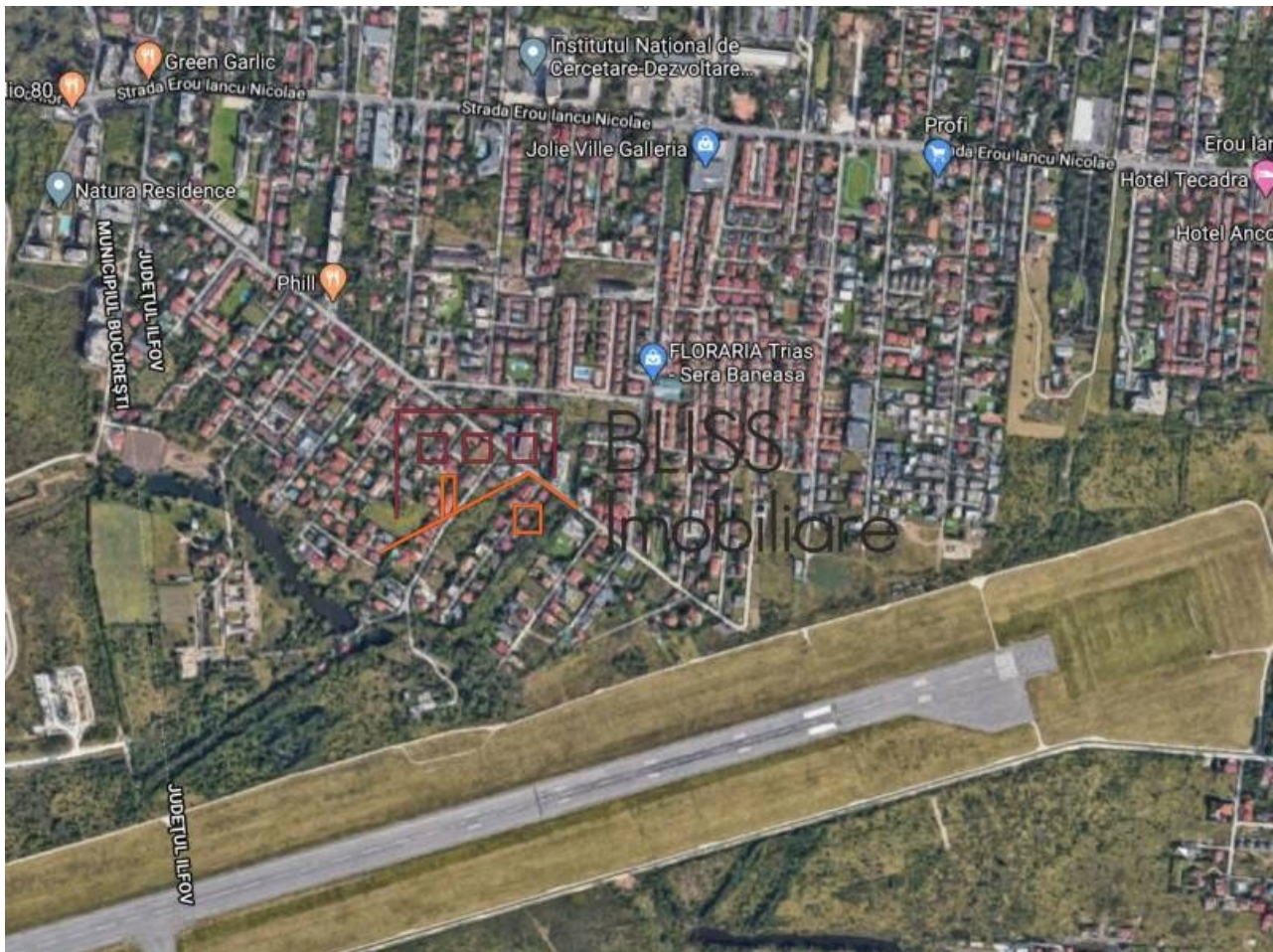
Updated on 10 December 2020

Land of 2.500 m²

📍 Iancu Nicolae Jolie Ville , Bucharest / Ilfov

378,000 EUR
280 EUR / m²

Web Reference
#900554



<https://blissimobiliare.ro/en/land-for-sale-iancu-nicolae-pipera-bucharest-ilfov-900554>
(<https://blissimobiliare.ro/en/land-for-sale-iancu-nicolae-pipera-bucharest-ilfov-900554>)

Description

Buildable, free, urban land of 2,500 sqm located in the north of Bucharest, in the Voluntari - Pipera area.

The land is ideal for residential development.

The land has a nice square shape and an opening of about 50m to asphalted & light easement road, with a width of 4-6m. The access on the easement road is from Drumul Potcoavei. Length of easement road from main road to the plot is ~ 150m.


The land is five - ten minutes away from:


- international schools: American School, British School, Lycee Francais, Mark Twain or Avenor;
- malls: Baneasa Shopping City, Jolie Ville or Strip Mall;
- social and sports clubs: Stejarii Country Club, Atlantis Club or World Class at Jolie Ville;
- public transport .


Land details


Land type	Constructible land
Size	1,350 m²
Land usage coefficient	2.2
Percentage of occupation	40%
Street openings	26.5 m
Road type	Asphalt
Protected area	No


Utilities

 Electricity

 Water

 Natural gas

 Sewage

 Telecom

Location

