



Updated on 10 Decembrie 2020

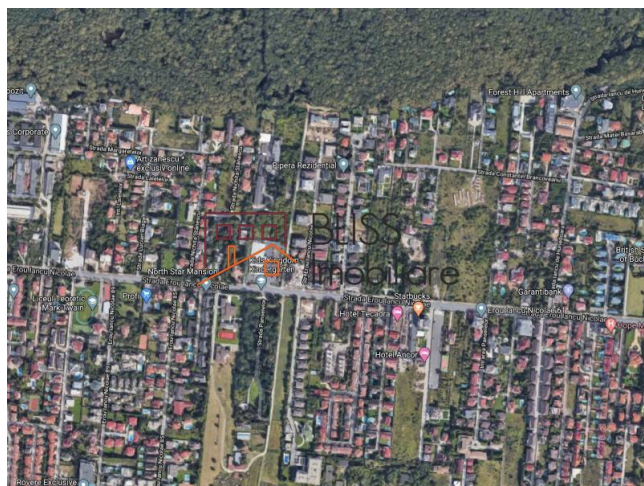
Land of 1.500 m²

 Iancu Nicolae, Bucharest / Ilfov

1,400,000 EUR
933 EUR / m²

Web Reference

#900602



<https://blissimobiliare.ro/en/land-for-sale-iancu-nicolae-pipera-bucharest-ilfov-900602>

Description

The land is located near Baneasa Forest.

Location

Urban land located in the north of Bucharest, in Voluntari - Pipera area, with an opening of 20.5m on Erou Iancu Nicolae street, with a rectangular shape.

- Urban technical parameter - UTR M1 - subzone of mixed use functions – services, retail, housing.
- POT 40%, CUT - 2.2 , Height regim P+6

Land development potential

Mixed use building with premium apartments on top floors and office / retail / healthcare facilities at ground level.
Total developed area above ground of 3.300 sqm.

Existing situation

On the land plot there is a house of 550 sqm rentable or to be demolished.

Neighborhood


The land is five minutes away from:


- international schools: American School, British School, Lycee Francais, Mark Twain or Avenor;
- retail: Baneasa Shopping City, Jolie Ville, Strip Mall or Lidl;


- social and sports clubs: Stejarii Country Club, Atlantis Club or World Class at Jolie Ville;
- public transport


Land details	
Land type	Constructible land
Size	1,500 m ²
Land usage coefficient	2.2
Percentage of occupation	40%
Street openings	30 m
Road type	Asphalt
Protected area	No


Utilities

 Electricity

 Water

 Natural gas

 Sewage

 Telecom

Location

