



Updated on 9 Aprilie 2021

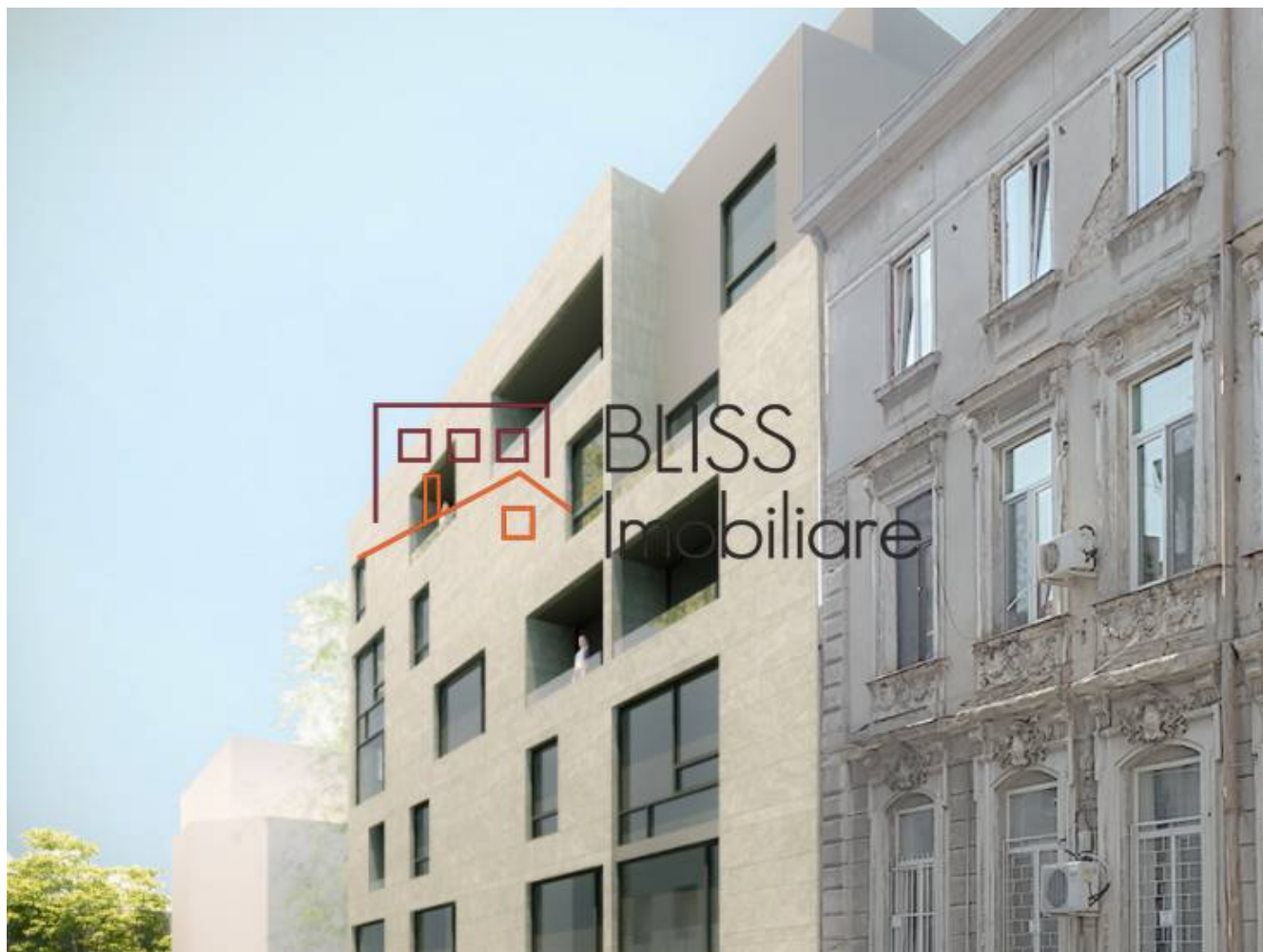
Land 430 m²;

 Cismigiu (Grigore Cobalcescu), Bucharest

Price on demand

Web Reference

#900736



<https://blissimobiliare.ro/en/land-for-sale-km-0-ultracentral-bucharest-900736>

Description

Plot of land located in Cismigiu area, with an area of 430 sqm and an opening of approximately 42m on 2 streets.

The land is located, from urbanistic point of view, in Protected Area no. 23 – Stirbei Voda. The maximum allowed height regime is GF + 4F + 5 withdrawn. The land benefits of multiple development possibilities.

A conceptual study for a residential development is already prepared.


On the land there are some buildings that need to be demolished. Buildings are not listed as historical monuments.


According to the urban regulations, in addition to housing, the following functions can be developed on the land: commercial spaces, offices, cultural spaces or hotels.


Offers to be submitted up to 10th of december.


Land details	
Land type	Constructible land
Size	430 m²
Land usage coefficient	3.25
Percentage of occupation	65%
Street openings	11 m / 30 m
Road type	Asphalt
Protected area	Yes
Protected Area no. 23 – Stirbei Voda.	


Utilities

 Electricity

 Water

 Natural gas

 Sewage

 Telecom

Location

