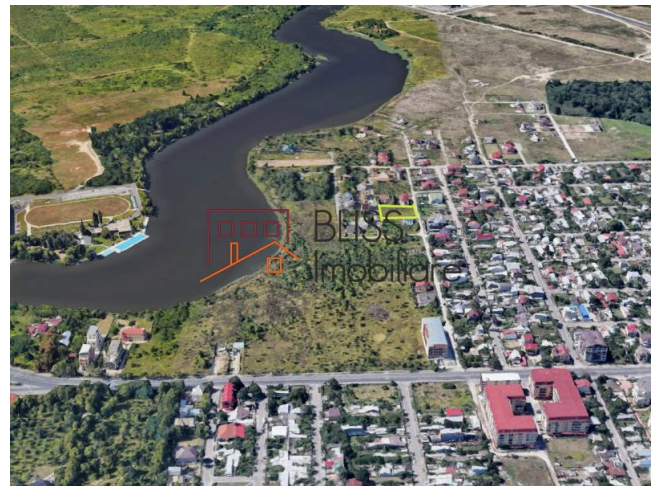
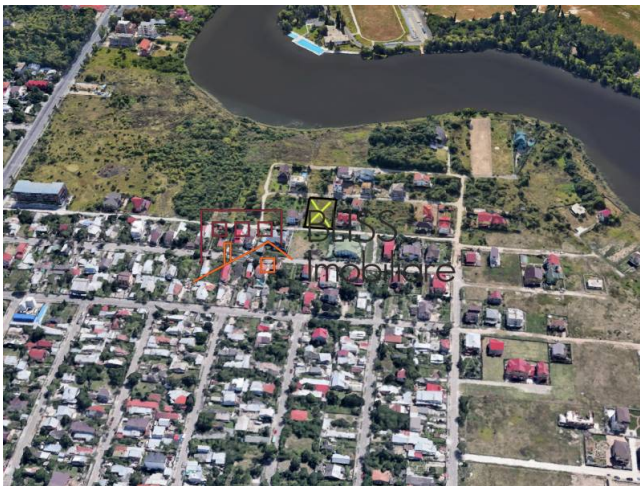




Updated on 31 Iulie 2023

Constructable land 750 sqm Sector 1 CUT 1.3 POT 45%

📍 Straulesti, Bucharest

245,000 EUR
327 EUR / m²Web Reference
#904756<https://blissimobiliare.ro/en/land-for-sale-baneasa-sisesti-jandarmerie-stralesti-sector-1-bucharest-904756>

Description

Constructable land plot of 750sqm with an opening of 15ml on two streets. Front and back. Excellent for residential development.

Excellent investment opportunity North West Bucharest near metro Straulesti






All utilities nearby: Sewage, Electricity, Water etc.

Sector 1 Bucharest, area Straulesti close to the metro station Straulesti and the Mogosoia round about with direct connection to the Bucharest ring road.

Indicative building parameters are CUT 1.3 POT 45%.

Land details	
Land type	Constructible land
Size	750 m ²
Land usage coefficient	1.3
Percentage of occupation	45%
Street openings	15 m / 15 m
Road type	Gravel
Protected area	No

Utilities

-  Electricity
-  Water
-  Natural gas
-  Sewage
-  Telecom

Location



Photos

