

**Isfahan Doekhie**

☎ +40 729 896 897

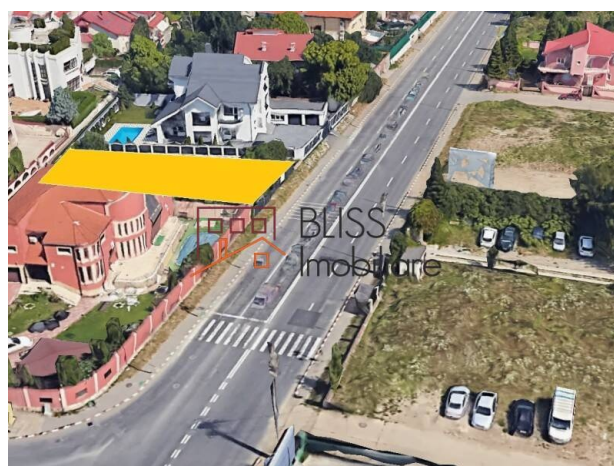
✉ contact@blissimobiliare.ro

(mailto:contact@blissimobiliare.ro)

Updated on 9 November 2023

buildable plot of 613 m² perfect for residential or retail

📍 Iancu Nicolae British School Bucharest,
Bucharest / Ilfov

400,000 EUR
653 EUR / m²Web Reference
#905828

<https://blissimobiliare.ro/en/land-for-sale-iancu-nicolae-pipera-bucharest-ilfov-905828>
(<https://blissimobiliare.ro/en/land-for-sale-iancu-nicolae-pipera-bucharest-ilfov-905828>)

Description

Buildable land located on Bld. Pipera very near to the intersection with Strada Erou Iancu Nicolae. The total area is 613 square meters with an opening of 20 ml to Boulevard Pipera.

Superb and attractive position with high visibility

According to the urban planning certificate the following parameters apply:

- POT 40% and CUT 2.2.

This land is located at a distance of 5-10 minutes from:


- International schools: American School, British School, Cambridge School, Mark Twain;
- Retail: Baneasa Shopping City, Jolie Ville, Strip Mall, Lidl, Mega Image;
- Social and sports clubs: Oaks Country Club, Atlantis Club or World Class at Jolie Ville;
- Baneasa Forest;


Excellent for the development of a boutique residential project or for a small commercial retail project.


Land details


Land type	Constructible land
Size	613 m²
Land usage coefficient	2.2
Percentage of occupation	40%
Street openings	20 m
Road type	Asphalt
Protected area	No


Utilities

 Electricity

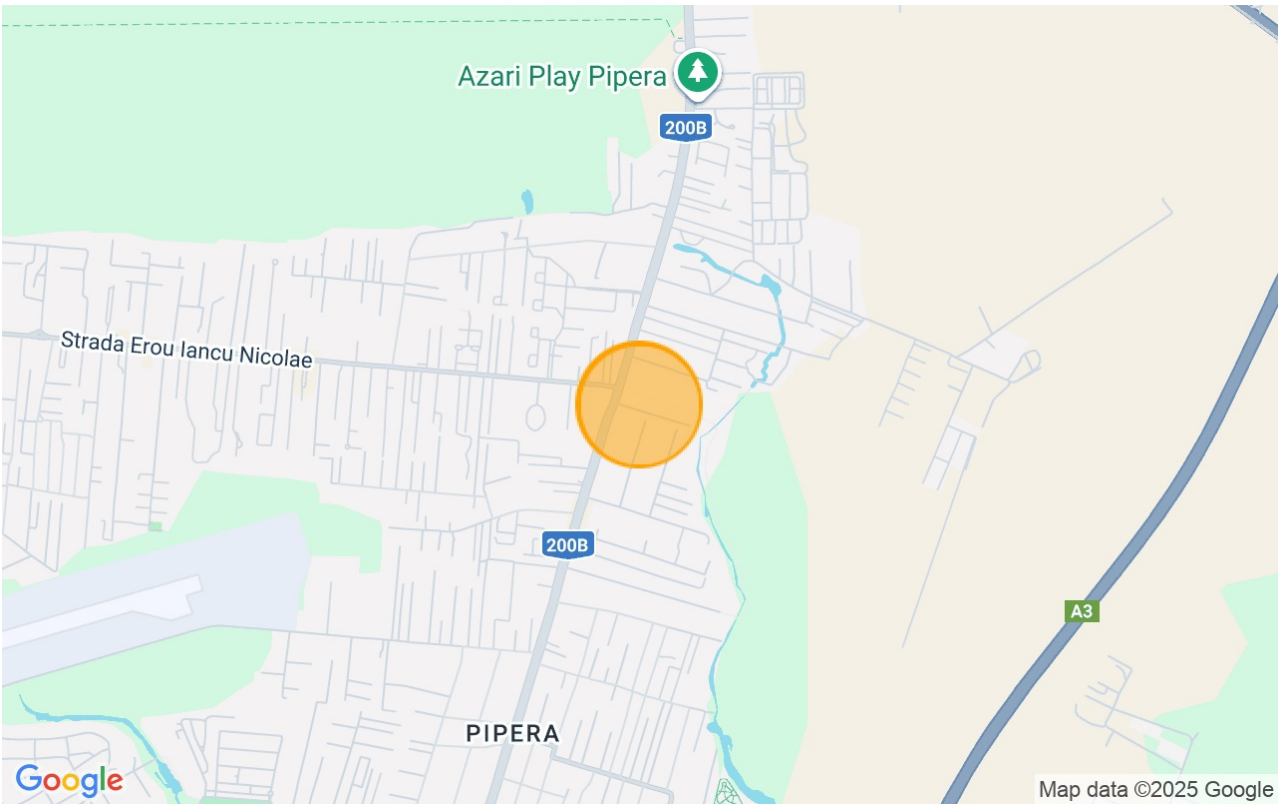
 Water

 Natural gas

 Sewage

 Telecom

Location



Photos

